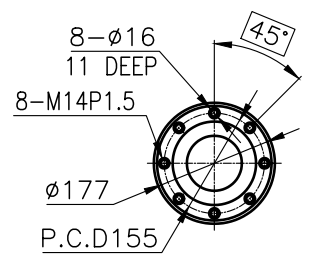
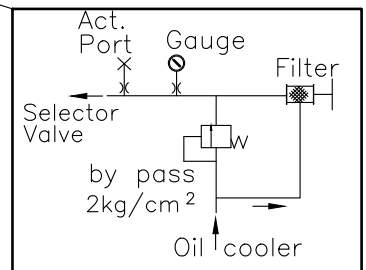
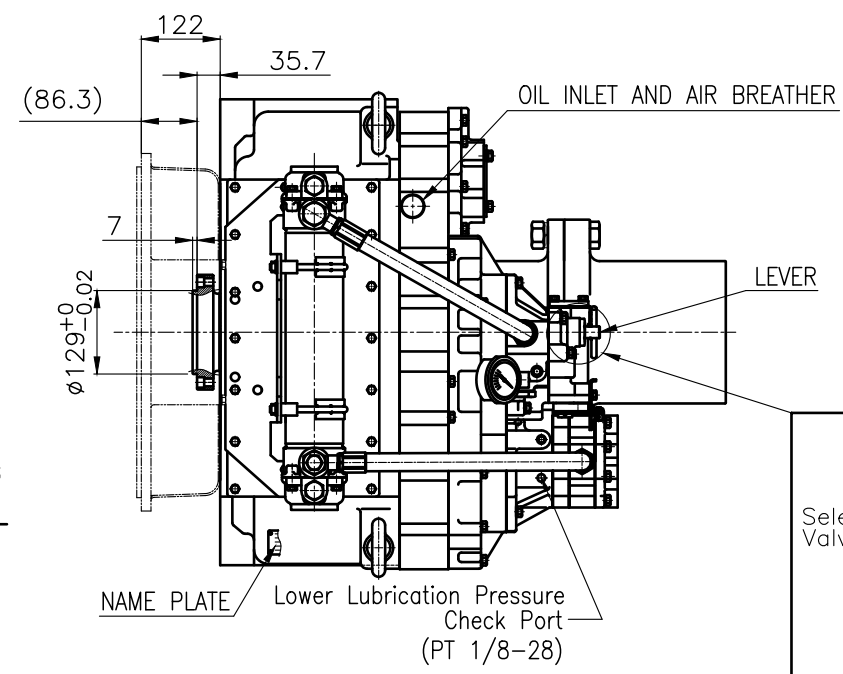


OUTPUT SHAFT COUPLING & PROPELLER COUPLING DIMENSION

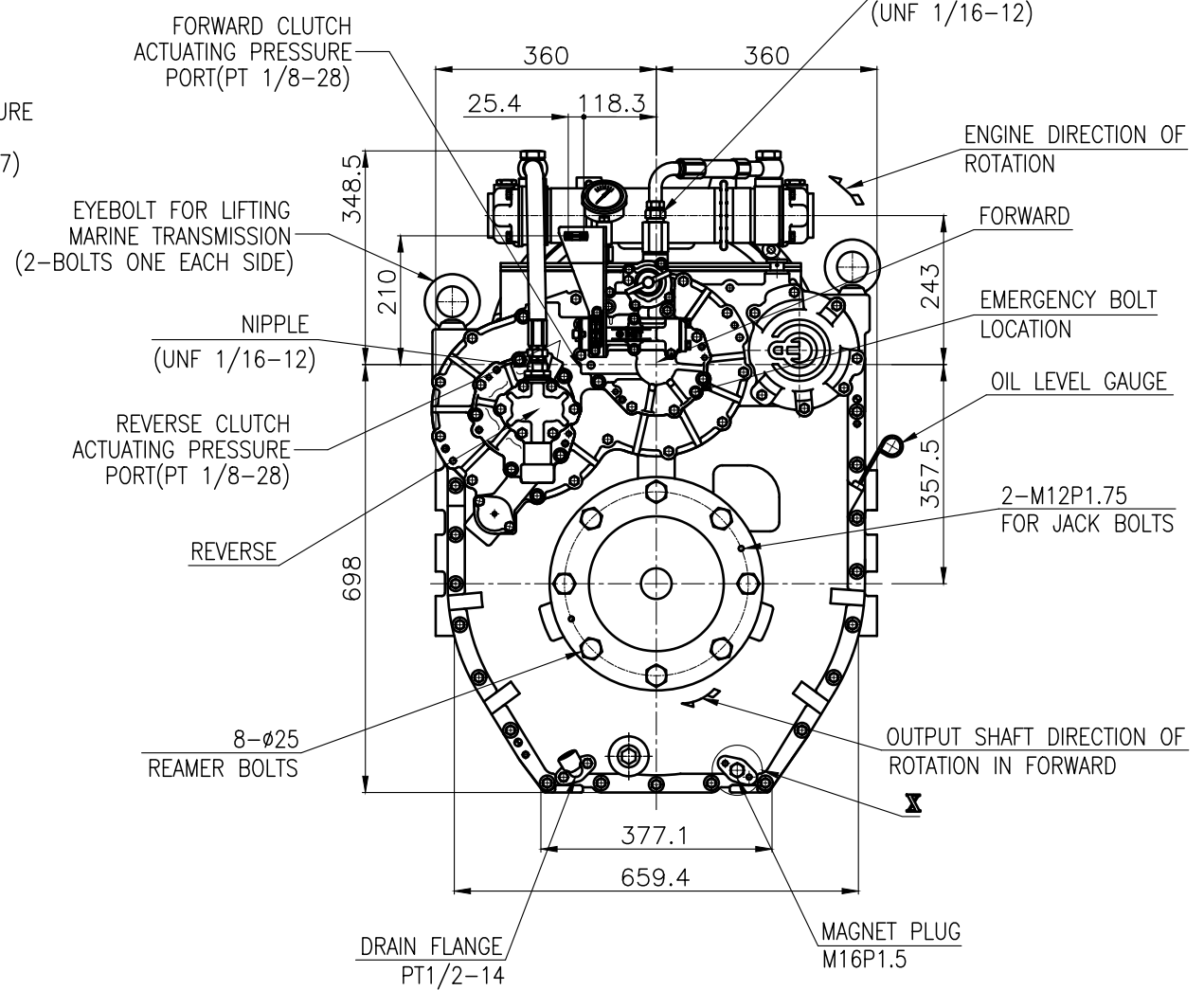
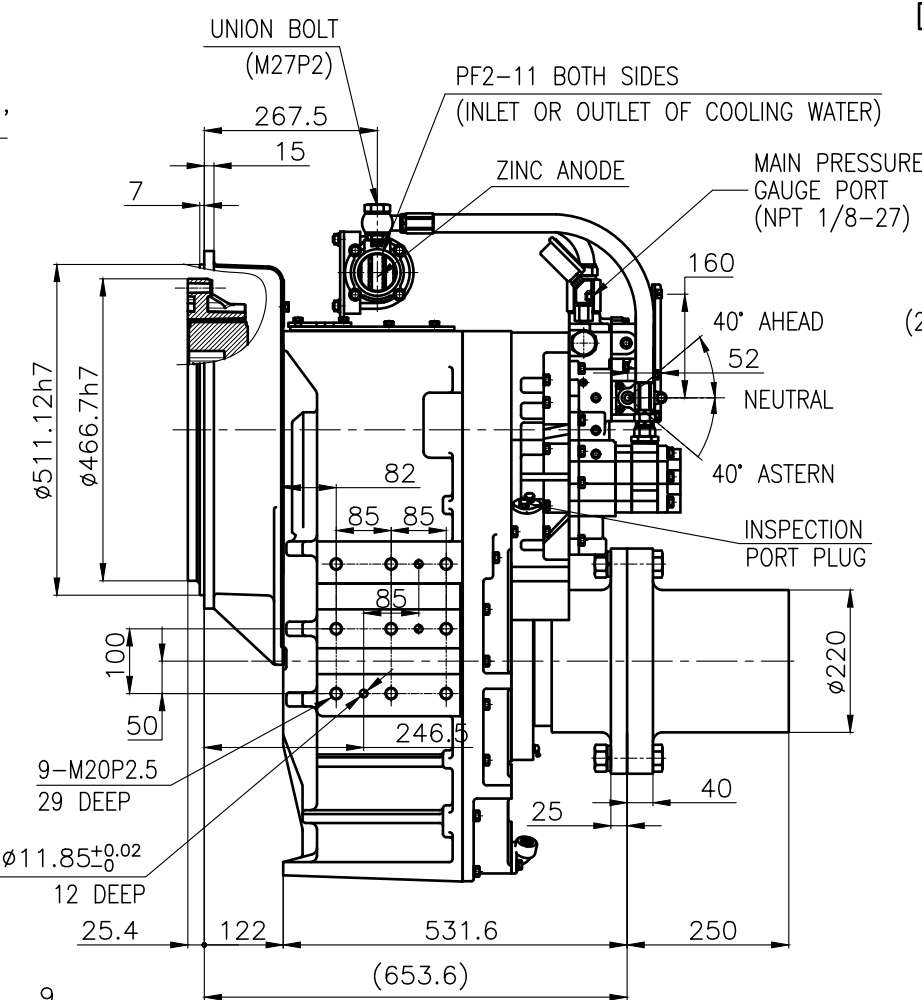
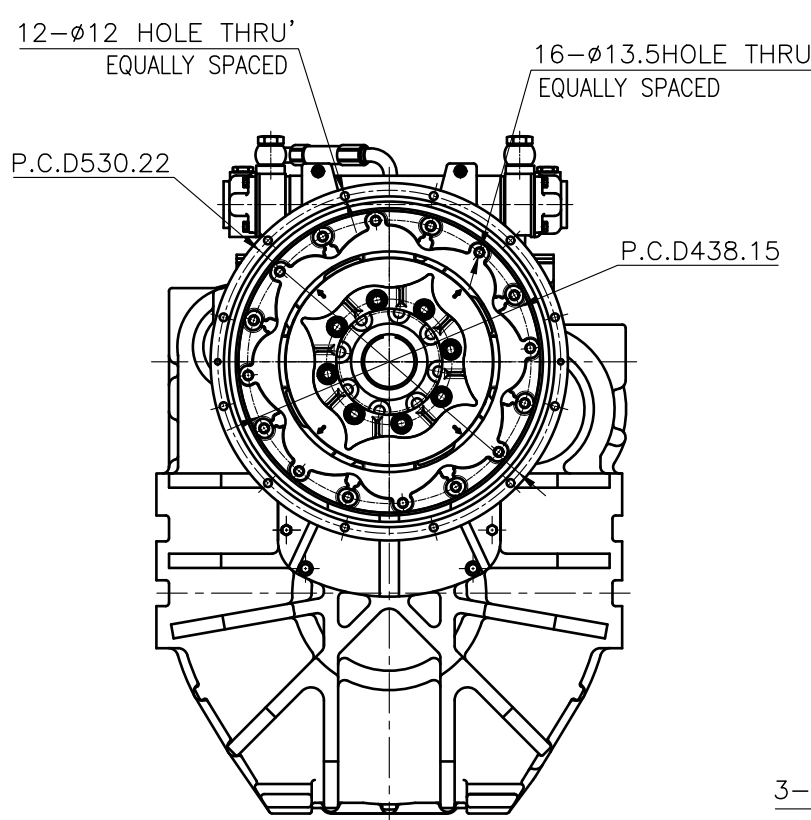


INPUT COUPLING DIMENSION

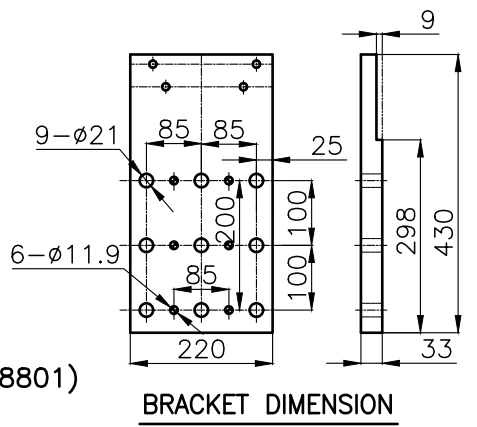


[BY PASS SYSTEM]

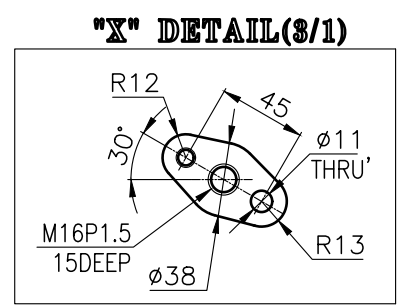
DMT460HL MARINE TRSANMISSION SPECIFICATION	
GEAR RATIO	3.02, 3.28, 3.56, 4.07, 4.48, 4.95
TOTAL WEIGHT	APPROX. 962 Kg(DRY)
OIL CAPACITY	APPROX. 18 L
OIL VISCOSITY	SAE # 30
OIL PRESSURE	1.96 ~ 2.54 MPa CLUTCH OIL
DIRECTION OF ROTATION	INPUT C.C.W VIEWED FROM THE STERN
IN FORWARD	OUTPUT C.W VIEWED FROM THE STERN
OIL CHANGE INTERVAL	THE FIRST 100HOURS OF INITIAL OPERATION AND EVERY 1000HOURS THEREAFTER
SHIFTING LIMIT	UNDER 50% OF THE RATED ENGINE SPEED
OIL COOLER	WATER FLOW 90 ~ 120 L/min
	TEMPERATURE OF COOLING WATER MAX 32°C
OPERATING TORQUE OF SHIFTING LEVER	UNDER 2.94Nm



- REMARK
- 1.HOUSING : SAE# 1
 - 2.DRIVING RING : SAE 14"
 - 3.COUPLING TYPE
CENTA Flex Coupling (77318801)

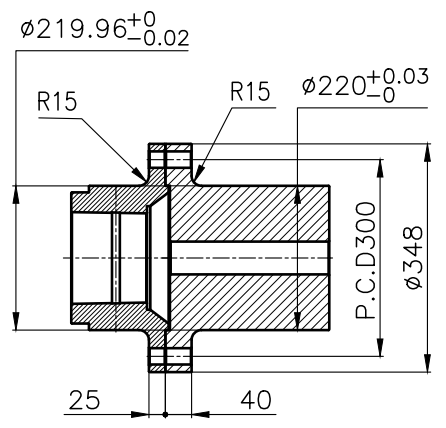


BRACKET DIMENSION

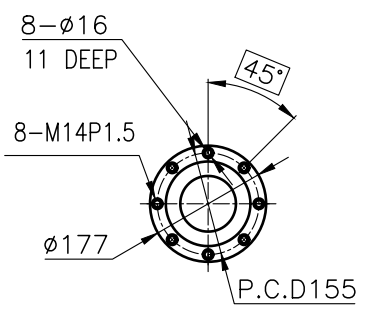


'X' DETAIL(3/1)

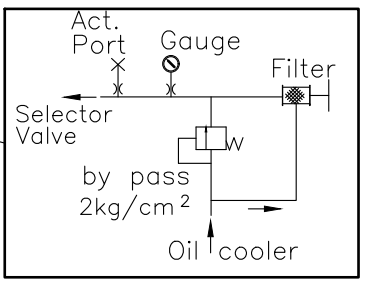
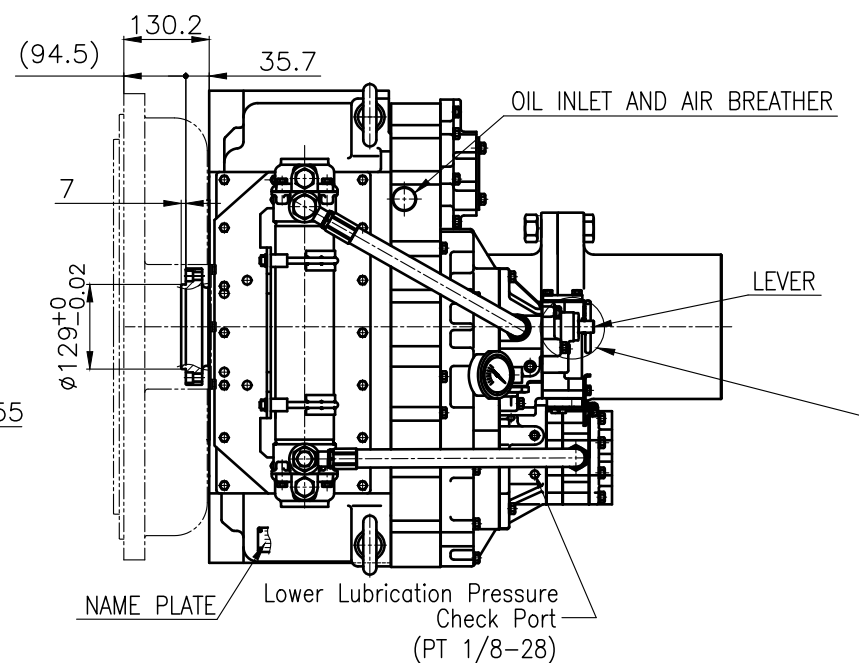
公差 TOLERANCE ON		변호 NO.		품 PART NO.		품 PART 명		개 수 Q'TY		재 MATERIAL		규 SIZE		비 REMARKS		
분수 FRACTIONS	소수 DECIMALS	각도 ANGLES	제 MATERIAL	작성 DATE	척도 SCALE	형 식 TYPE	원도 번호 ORIGINAL DWG. NO.									
±	±	±	2018.06.29 <td>N/S <td>DMT460HL <td>000 <td></td> <td colspan="2"></td> <td colspan="2"></td> <td colspan="2"></td> <td colspan="2"></td> </td></td></td>	N/S <td>DMT460HL <td>000 <td></td> <td colspan="2"></td> <td colspan="2"></td> <td colspan="2"></td> <td colspan="2"></td> </td></td>	DMT460HL <td>000 <td></td> <td colspan="2"></td> <td colspan="2"></td> <td colspan="2"></td> <td colspan="2"></td> </td>	000 <td></td> <td colspan="2"></td> <td colspan="2"></td> <td colspan="2"></td> <td colspan="2"></td>										
검사 가 공		승 인		검 도		제 도 설 계		품 명		도 번		기 기		고-드 번호		
구	본	조	급	종	급	정	명	APPROVED BY	CHECKED BY	DRAWN	DESIGNED	NAME	DWG. NO.	SIZE	CODE ID. NO.	
1	조	과	4	이	하	± 0.3	± 0.1	± 0.05	JK.Kim	TH.Cha	CH.Baek	MARINE TRANSMISSION	46000GHA~F-114CFR	A 3	000	
4	16	± 0.5	± 0.2	± 0.07												
16	63	± 0.7	± 0.3	± 0.1												
63	250	± 1.2	± 0.5	± 0.2												
250	1000	± 2.0	± 0.8	± 0.3												
D-I INDUSTRIAL																



OUTPUT SHAFT COUPLING & PROPELLER COUPLING DIMENSION

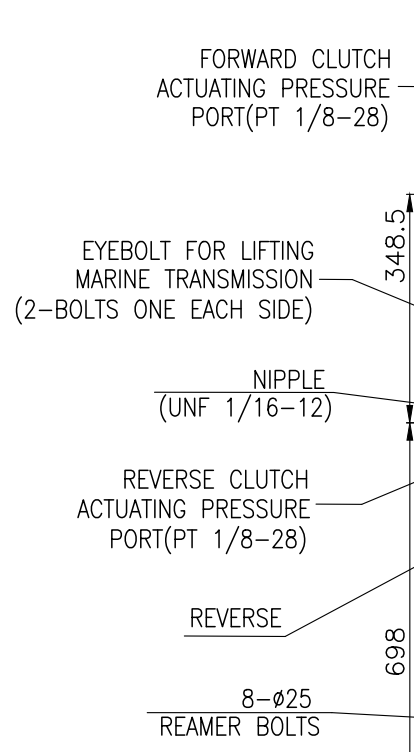
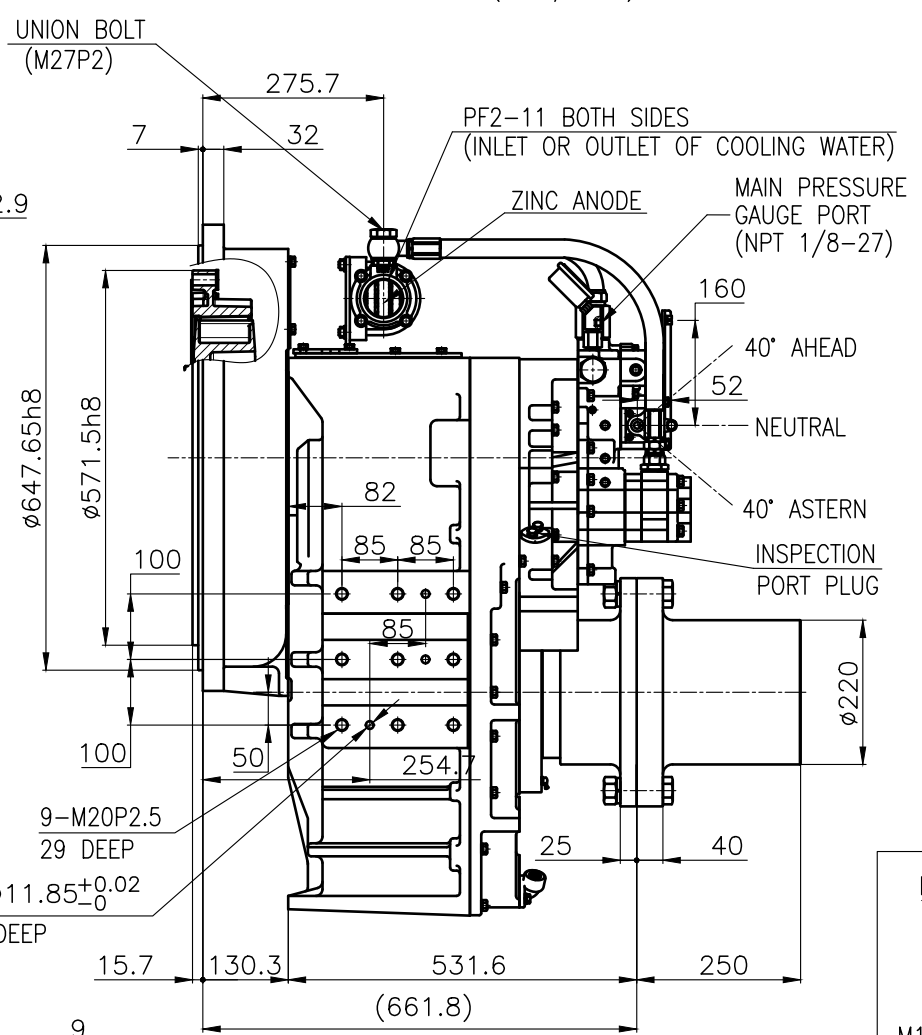
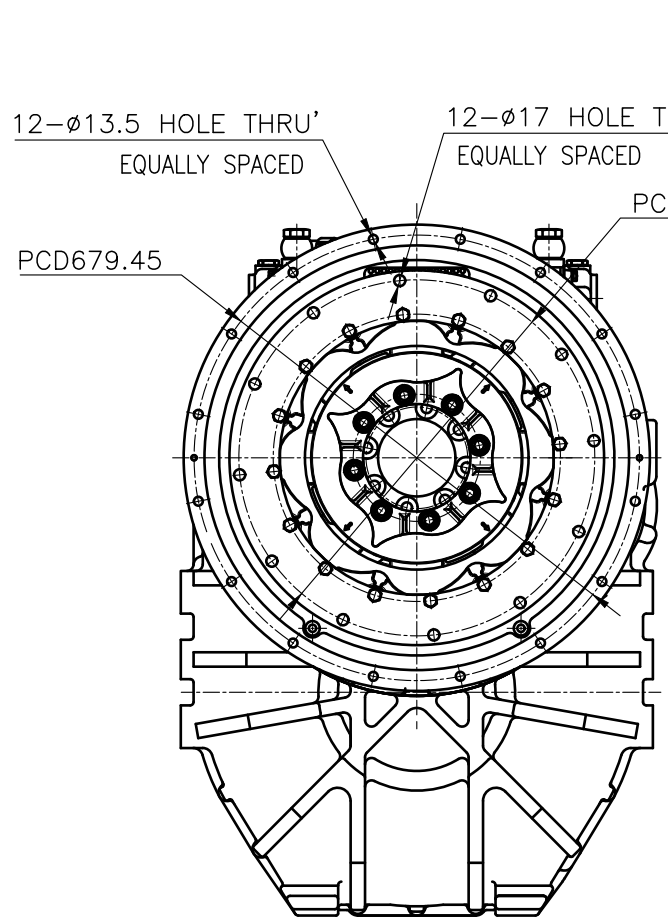


INPUT COUPLING DIMENSION

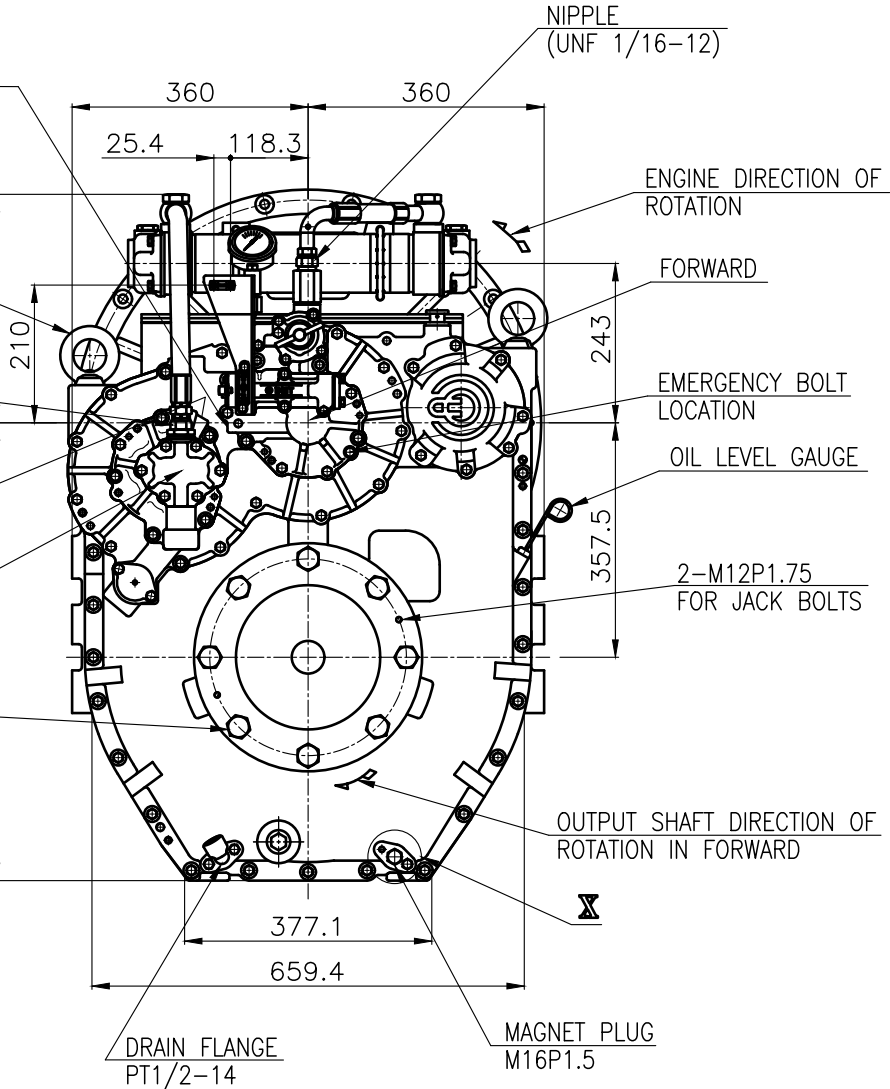
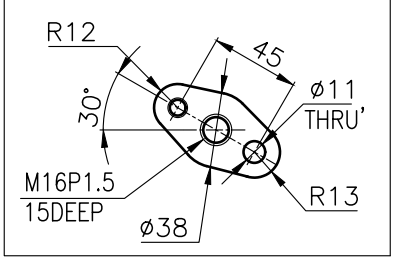


[BY PASS SYSTEM]

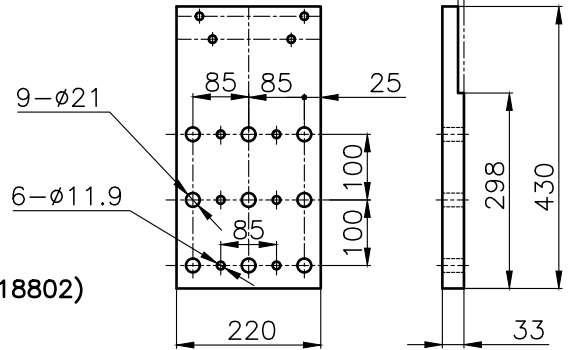
DMT460HL MARINE TRANSMISSION SPECIFICATION		
GEAR RATIO	3.02, 3.28, 3.56, 4.07, 4.48, 4.95	
TOTAL WEIGHT	APPROX. 979 Kg(DRY)	
OIL CAPACITY	APPROX. 18L	
OIL VISCOSITY	SAE # 30	
OIL PRESSURE	1.96 ~ 2.54 MPa	CLUTCH OIL
DIRECTION OF ROTATION	INPUT	C.C.W VIEWED FROM THE STERN
	OUTPUT	C.W VIEWED FROM THE STERN
OIL CHANGE INTERVAL	THE FIRST 100HOURS OF INITIAL OPERATION AND EVERY 1000HOURS THEREAFTER	
SHIFTING LIMIT	UNDER 50% OF THE RATED ENGINE SPEED	
OIL COOLER	WATER FLOW 90 ~ 120 L/min	
	TEMPERATURE OF COOLING WATER MAX 32°C	
OPERATING TORQUE OF SHIFTING LEVER	UNDER 2.94Nm	



"X" DETAIL(3/1)

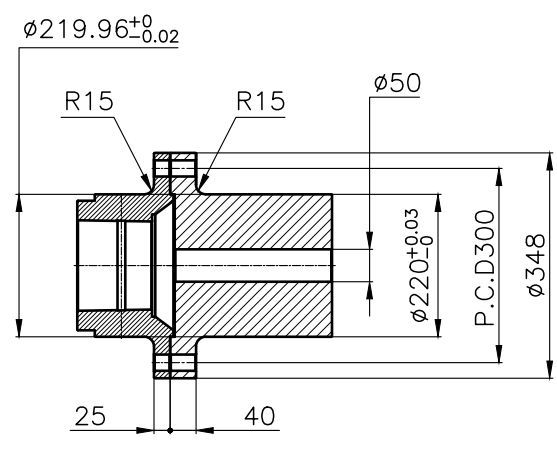


- REMARK
- HOUSING : SAE# 0
 - DRIVING RING : SAE 18"
 - COUPLING TYPE :
- CENTA Flex Coupling (77318802)

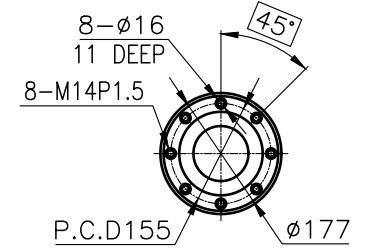


BRACKET DIMENSION

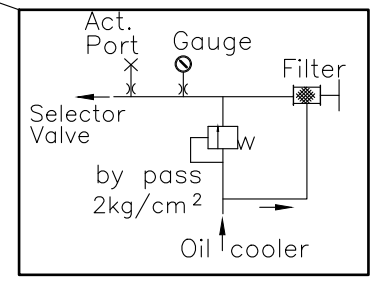
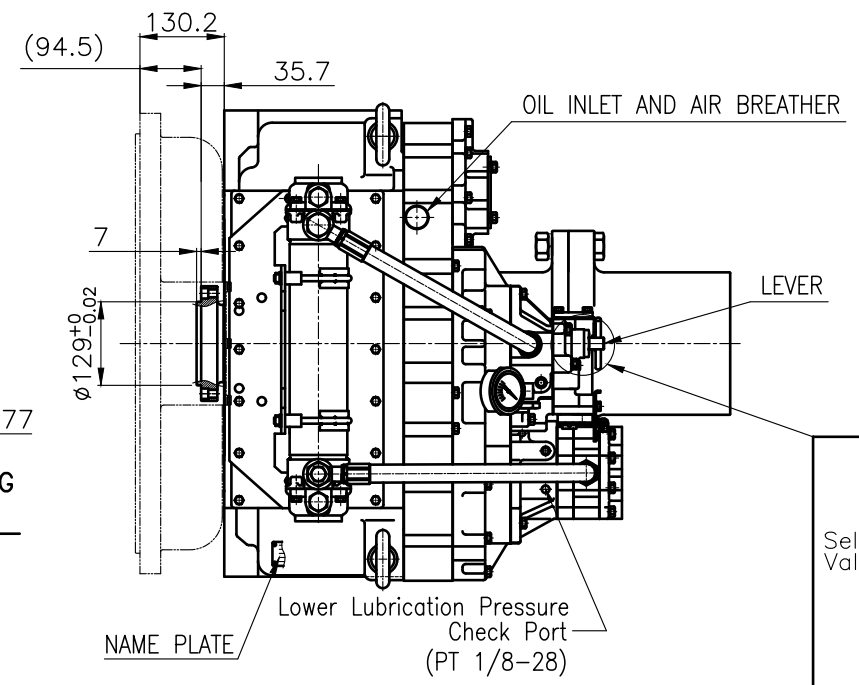
公差表 TOLERANCE ON				PART NO.				PART NAME				REMARKS																							
분수		소수		각도		수량		재질		규격		비고																							
FRACTIONS		DECIMALS		ANGLES		QTY		MATERIAL		SIZE		REMARKS																							
±	±	±	±	±	±	±	±	±	±	±	±	±	±																						
<table border="1"> <thead> <tr> <th>구분</th> <th>조급</th> <th>종급</th> <th>정급</th> </tr> </thead> <tbody> <tr> <td>1 초과 4 이하</td> <td>± 0.3</td> <td>± 0.1</td> <td>± 0.05</td> </tr> <tr> <td>4</td> <td>± 0.5</td> <td>± 0.2</td> <td>± 0.07</td> </tr> <tr> <td>16</td> <td>± 0.7</td> <td>± 0.3</td> <td>± 0.1</td> </tr> <tr> <td>63</td> <td>± 1.2</td> <td>± 0.5</td> <td>± 0.2</td> </tr> <tr> <td>250</td> <td>± 2.0</td> <td>± 0.8</td> <td>± 0.3</td> </tr> </tbody> </table>				구분	조급	종급	정급	1 초과 4 이하	± 0.3	± 0.1	± 0.05	4	± 0.5	± 0.2	± 0.07	16	± 0.7	± 0.3	± 0.1	63	± 1.2	± 0.5	± 0.2	250	± 2.0	± 0.8	± 0.3	변형 NO. PART NO. 변형 PART NAME 명 재질 MATERIAL 작성 DATE 2018.04.16 척도 SCALE N/S 승인 APPROVED BY JK.Kim 검토 CHECKED BY TH.Cha 제도 DRAWN GH.Park 설계 DESIGNED				형식 TYPE DMT460HL ORIGINAL DWG. NO. 품명 NAME MARINE TRANSMISSION 도번 DWG. NO. 46000GHA~F-018CFR 개칭(REV.) 000 크기 SIZE A 3 코드 번호 CODE ID. NO.			
구분	조급	종급	정급																																
1 초과 4 이하	± 0.3	± 0.1	± 0.05																																
4	± 0.5	± 0.2	± 0.07																																
16	± 0.7	± 0.3	± 0.1																																
63	± 1.2	± 0.5	± 0.2																																
250	± 2.0	± 0.8	± 0.3																																
① D-I INDUSTRIAL								DMT460HL MARINE TRANSMISSION SPECIFICATION																											



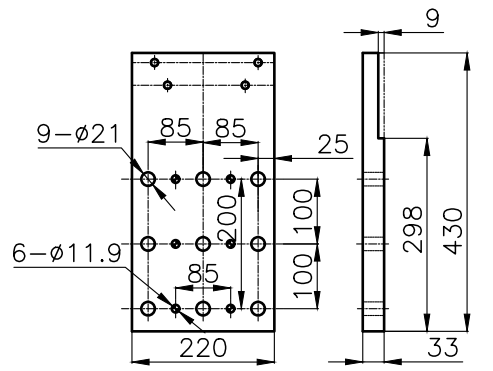
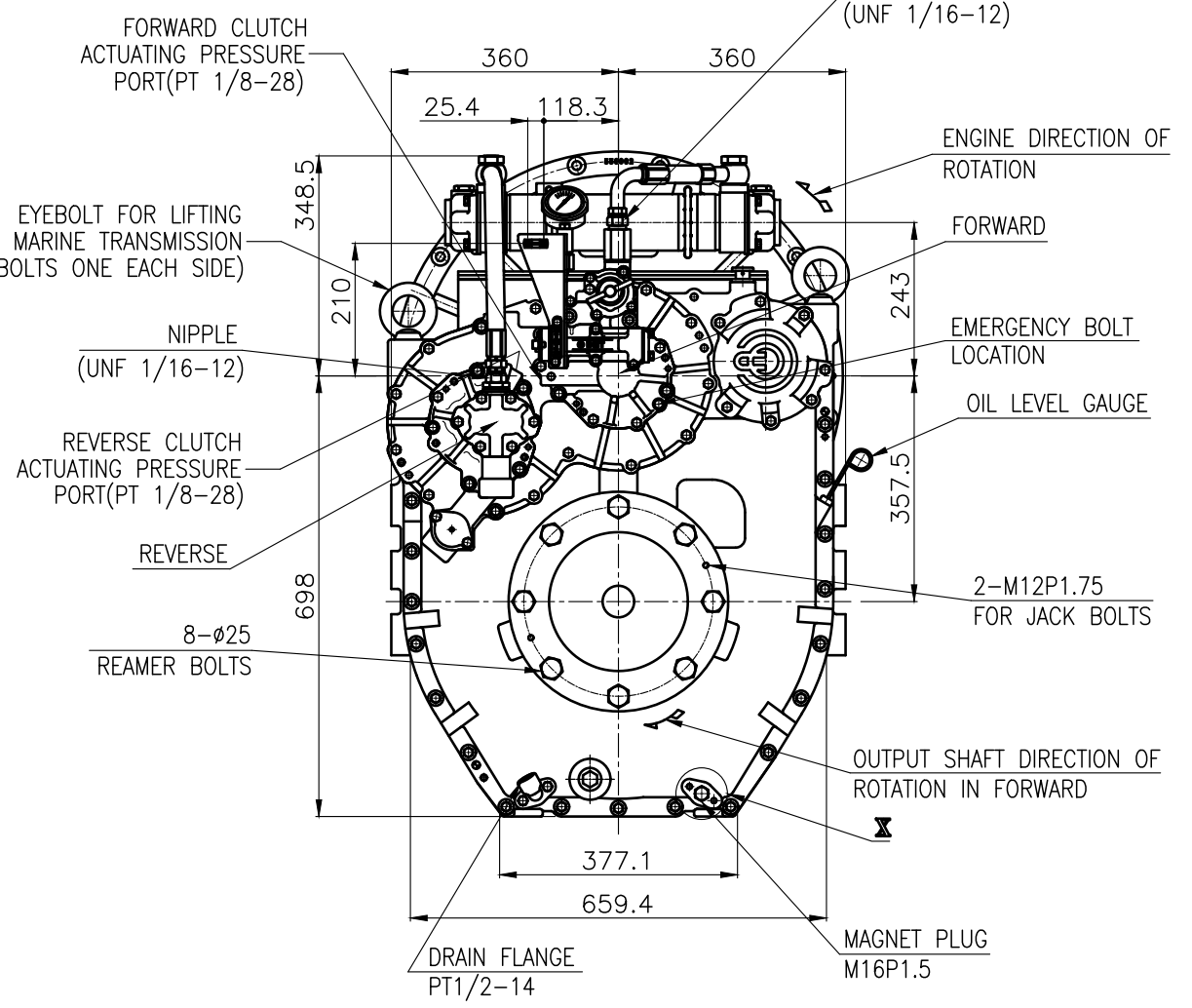
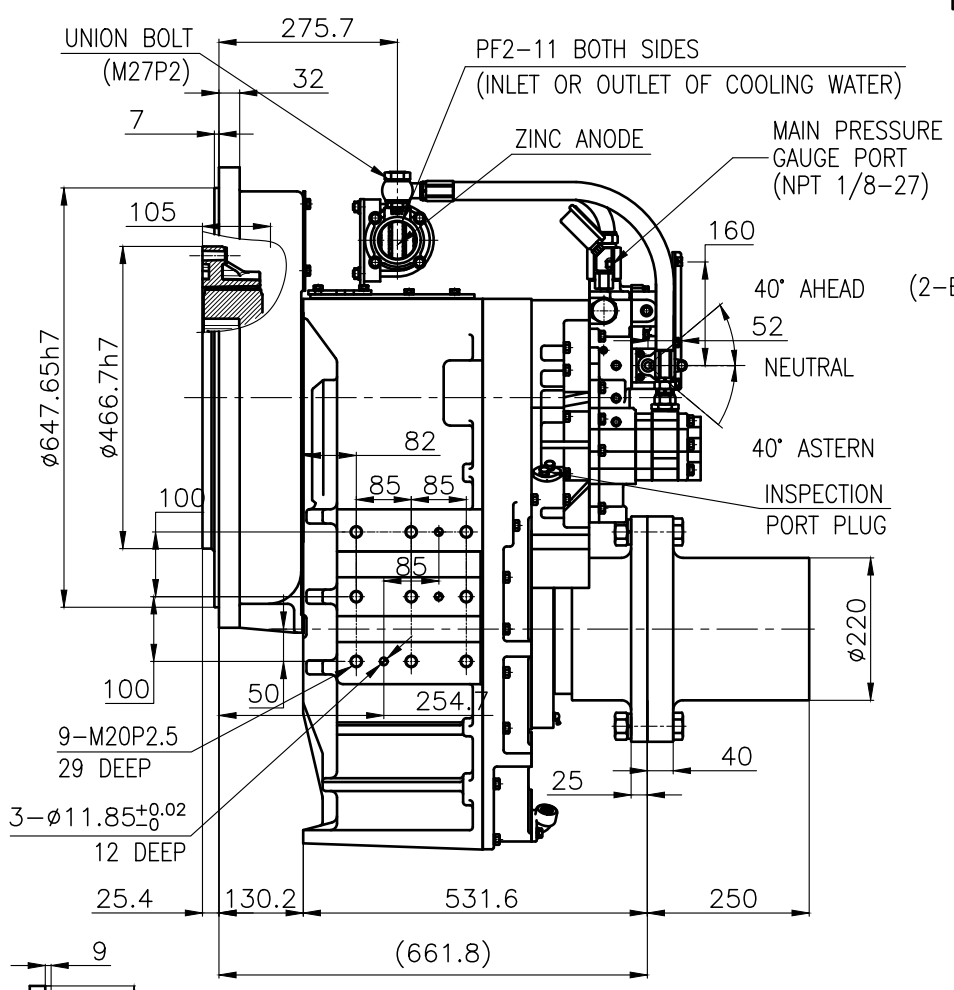
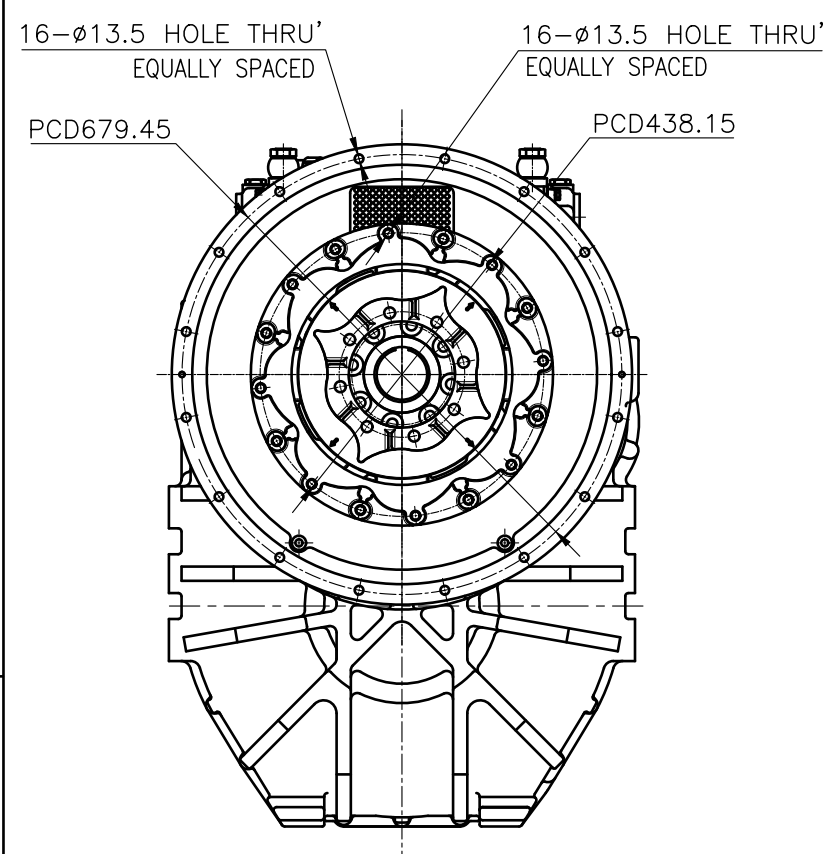
OUTPUT SHAFT COUPLING & PROPELLER COUPLING DIMENSION



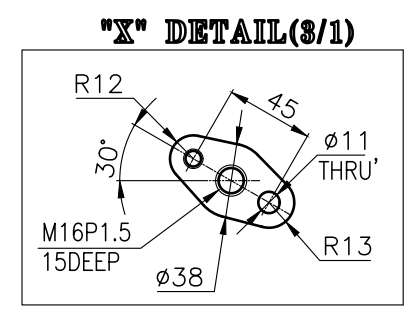
INPUT COUPLING DIMENSION



DMT460HL MARINE TRSANMISSION SPECIFICATION		
GEAR RATIO	3.02, 3.28, 3.56, 4.07, 4.48, 4.95	
TOTAL WEIGHT	APPROX. 1005 Kg(DRY)	
OIL CAPACITY	APPROX. 18 L	
OIL VISCOSITY	SAE # 30	
OIL PRESSURE	1.96 ~ 2.54 MPa	CLUTCH OIL
DIRECTION OF ROTATION	INPUT	C.C.W VIEWED FROM THE STERN
IN FORWARD	OUTPUT	C.W VIEWED FROM THE STERN
OIL CHANGE INTERVAL	THE FIRST 100HOURS OF INITIAL OPERATION AND EVERY 1000HOURS THEREAFTER	
SHIFTING LIMIT	UNDER 50% OF THE RATED ENGINE SPEED	
OIL COOLER	WATER FLOW 90 ~ 120 L/min	
	TEMPERATURE OF COOLING WATER	MAX 32°C
OPERATING TORQUE OF SHIFTING LEVER	UNDER 2.94Nm	



BRACKET DIMENSION



REMARK
 1.HOUSING : SAE# 0
 2.DRIVING RING : SAE 14"
 3.COUPLING TYPE
 CENTA Flex Coupling (77318804)

공통공차 TOLERANCE ON				번호 NO.	품 PART NO.	품 PART NAME	개수 Q'TY	재 MATERIAL	규 SIZE	비 REMARKS
분수	소수	각도		MATERIAL DATE 2018.06.29 SCALE N/S APPROVED BY JK.Kim CHECKED BY TH.Cha DRAWN CH.Baek DESIGNED 품명 MARINE TRANSMISSION 도번 46000GHA~F-014CFR 크기 SIZE A3 코드 번호 CODE ID. NO.						
±	±	±	±	원도번호 ORIGINAL DWG. NO. 개량(REV.) 000						
구분	구분	중급	정급	D-I INDUSTRIAL						
1 초과 4 이하	± 0.3	± 0.1	± 0.05	SHEET 1 OF 1 004(841x594)						
4	16	± 0.5	± 0.2							
16	63	± 0.7	± 0.3							
63	250	± 1.2	± 0.5							
250	1000	± 2.0	± 0.8							