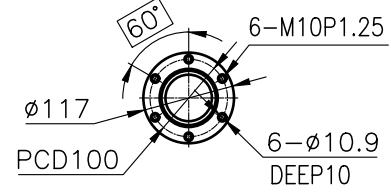
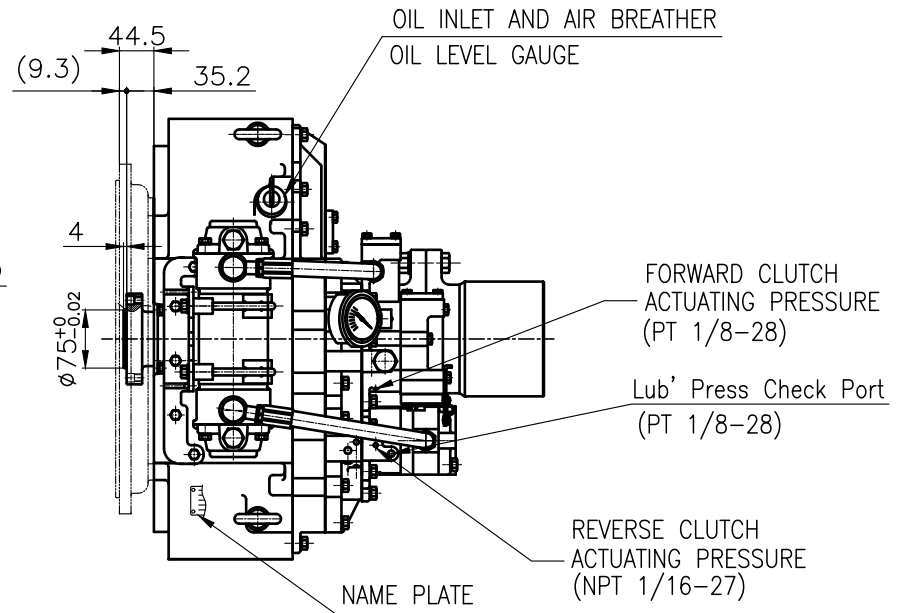


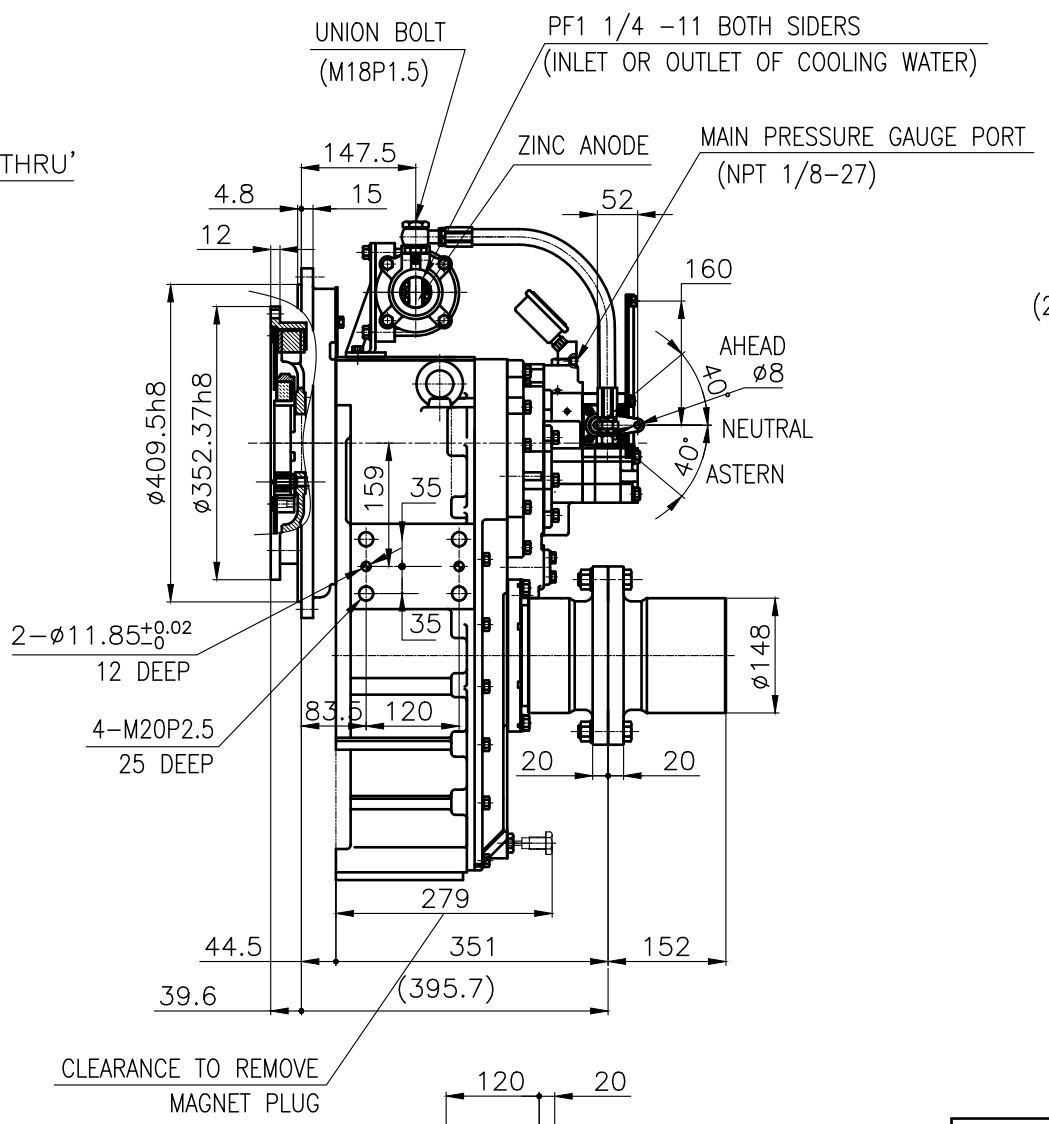
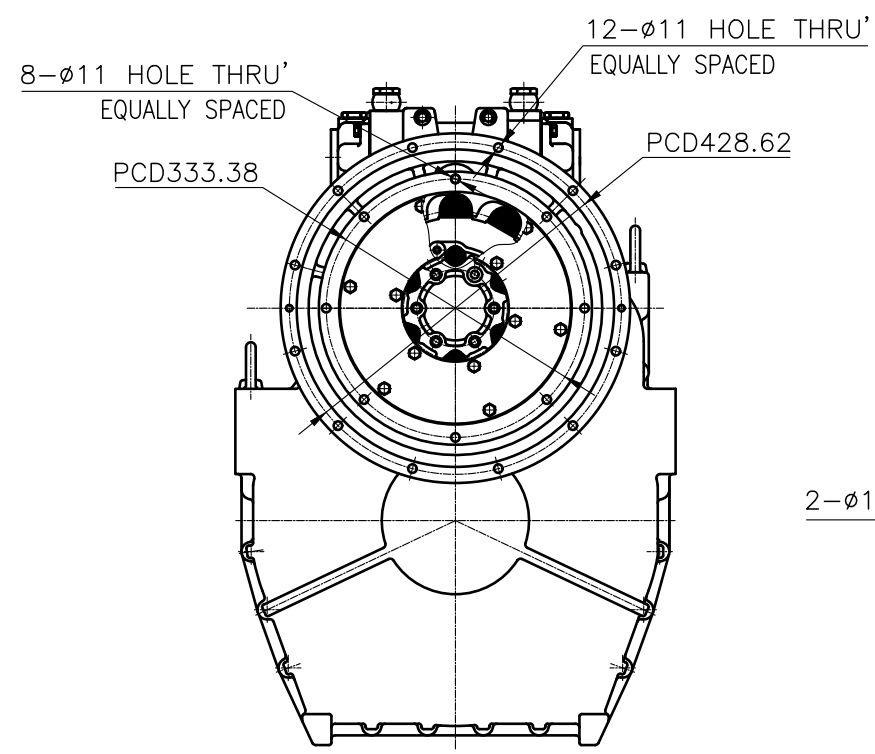
OUTPUT SHAFT COUPLING & PROPELLER COUPLING DIMENSION



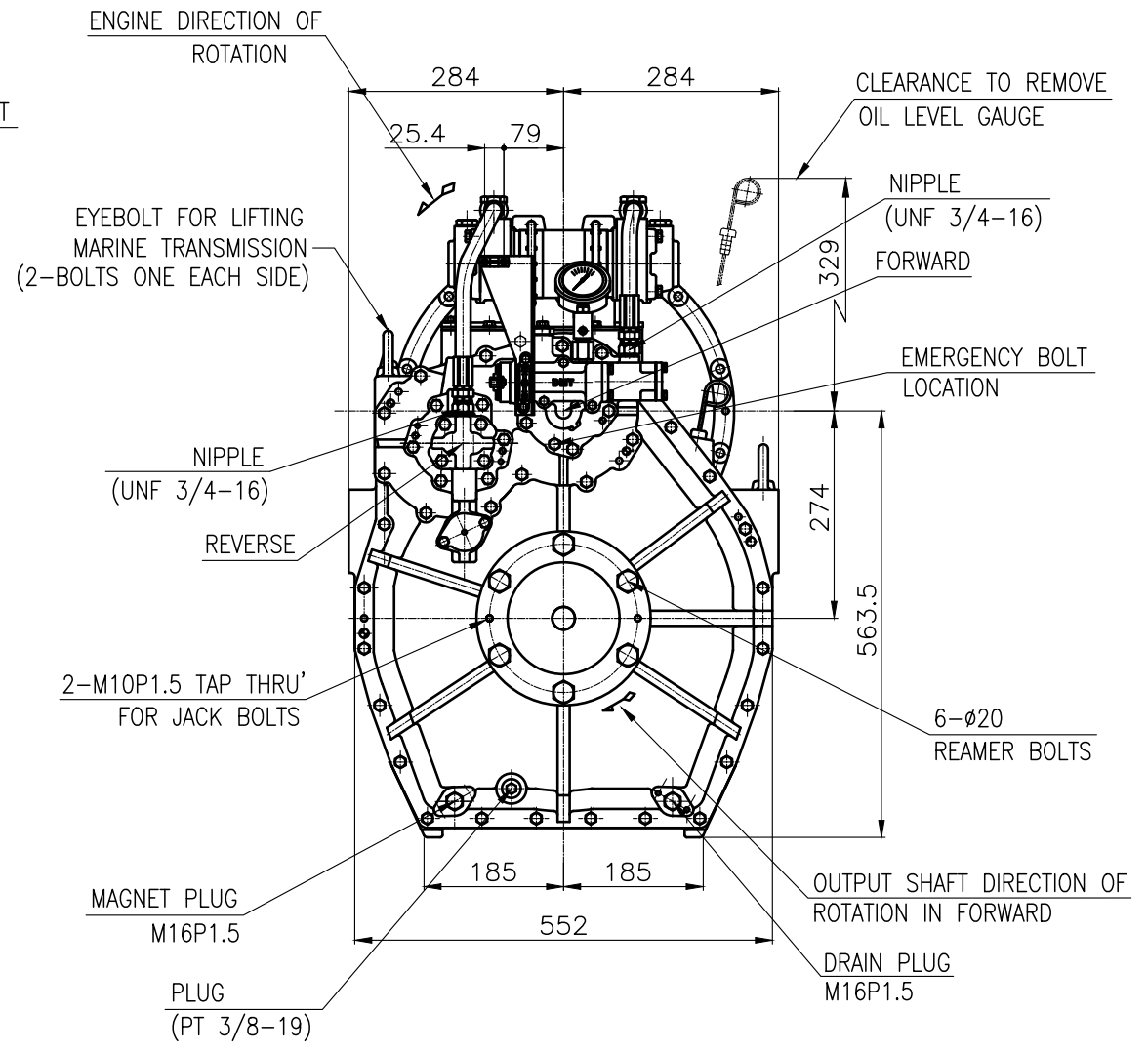
INPUT COUPLING DIMENSION



DMT 135HL MARINE TRANSMISSION SPECIFICATION		
GEAR RATIO	4.07, 4.50, 4.95	
TOTAL WEIGHT	APPROX. 263 kg(DRY)	
OIL CAPACITY	APPROX. 9.5L	
OIL VISCOSITY	SAE # 30	
OIL PRESSURE	1.96 ~ 2.54 MPa	CLUTCH OIL
DIRECTION OF ROTATION	INPUT	C.C.W VIEWED FROM THE STERN
	OUTPUT	C.W VIEWED FROM THE STERN
OIL CHANGE INTERVAL	THE FIRST 100HOURS OF INITIAL OPERATION AND EVERY 1000HOURS THEREAFTER	
SHIFTING LIMIT	UNDER 50% OF THE RATED ENGINE SPEED	
OIL COOLER	WATER FLOW 40 ~ 60L/min	
	TEMPERATURE OF COOLING WATER MAX 32°C	
OPERATING TORQUE OF SHIFTING LEVER	UNDER 2.94Nm	

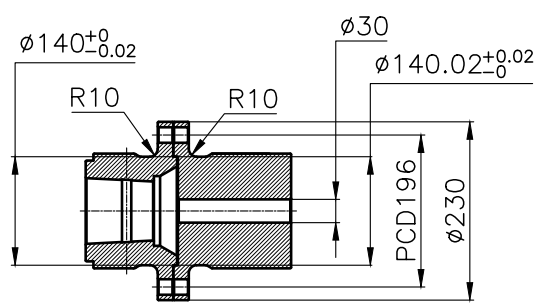


BRACKET DIMENSION

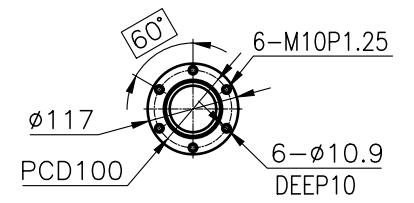


- REMARK (HOT)
- 1.HOUSING: SAE#3
  - 2.DRIVING RING: SAE 11.5"
  - 3.COUPLING TYPE : DUAL STAGE
  - 4.APPLICATION ENGINE : STANDARD

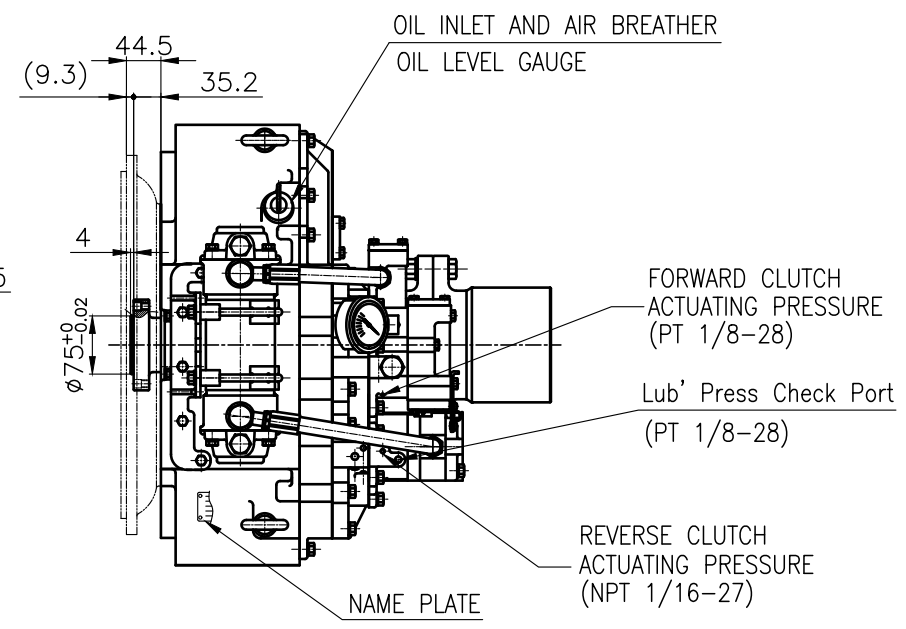
공통공차 TOLERANCE ON				번호 NO.	품명 PART NO.	품명 PART NAME	개수 Q'TY	재질 MATERIAL	규격 SIZE	비고 REMARKS
분수 FRACTIONS	소수 DECIMALS	각도 ANGLES	공차 TOLERANCE	작성 DATE	검도 SCALE	형식 TYPE	DMT135HL ORIGINAL DWG. NO.			
±	±	±	±	2018.06.20	N/S	명명 NAME	MARINE TRANSMISSION			
±	±	±	±	APPROVED BY	검도 DRAWN	품명 NAME	13500GH~C-3115DCH			
±	±	±	±	JK.Kim	TH.Cha	MA.Kim	도번 DWG. NO.	13500GH~C-3115DCH		
±	±	±	±	D-I INDUSTRIAL			크기 SIZE	A 3		
±	±	±	±				코드 번호 CODE ID. NO.			



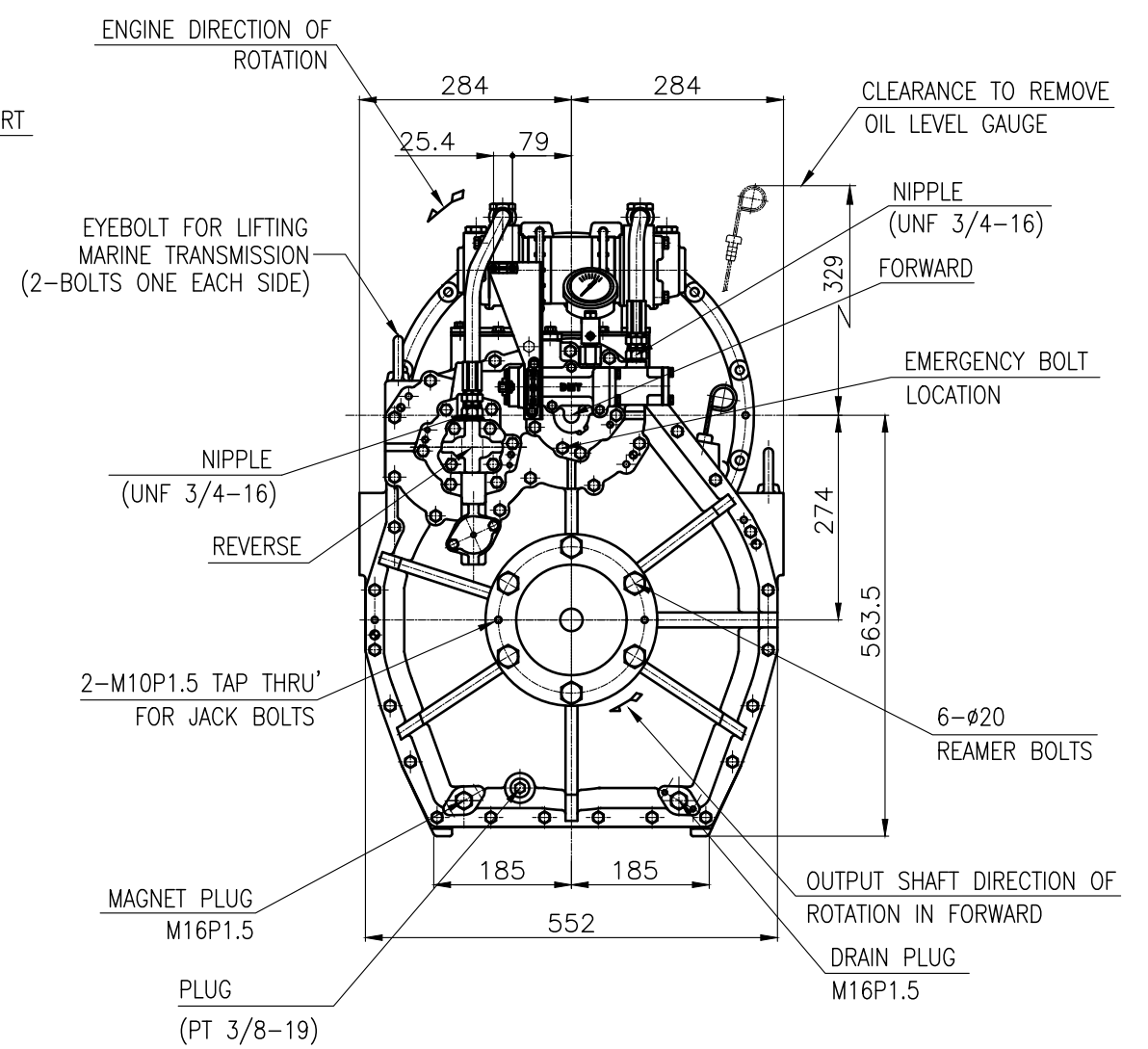
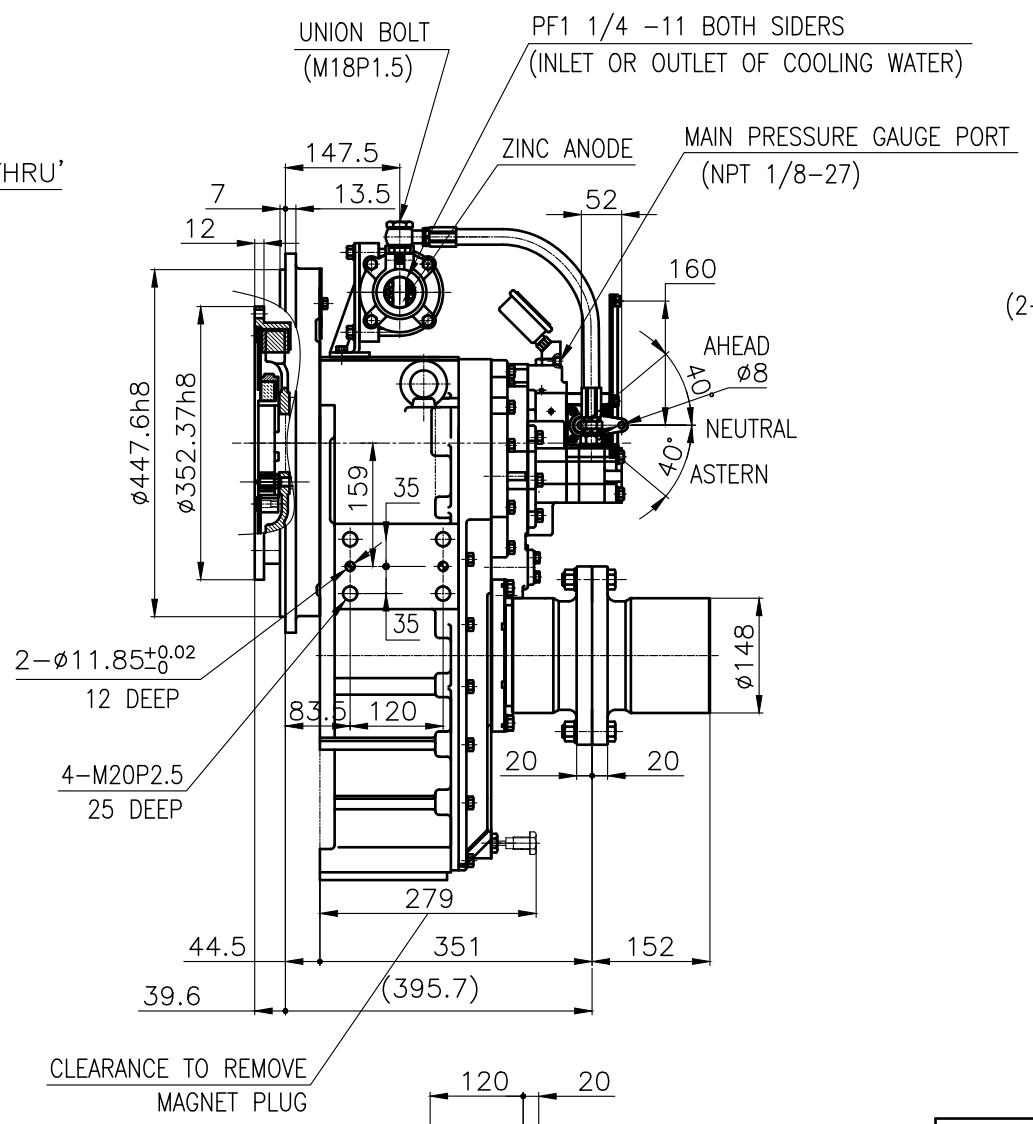
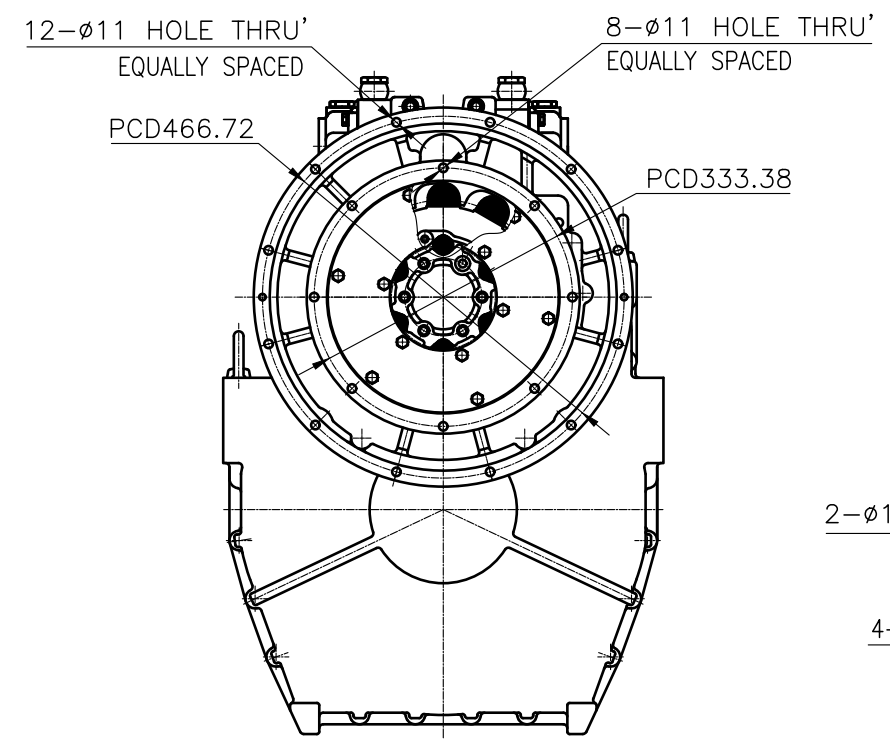
OUTPUT SHAFT COUPLING & PROPELLER COUPLING DIMENSION



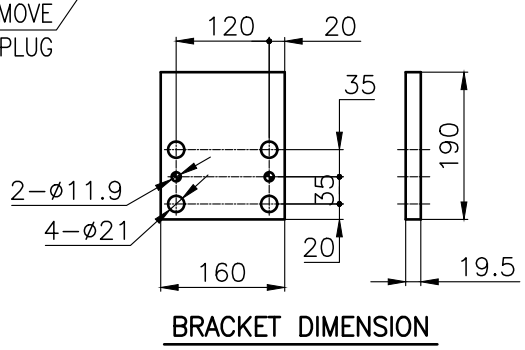
INPUT COUPLING DIMENSION



DMT 135HL MARINE TRANSMISSION SPECIFICATION	
GEAR RATIO	4.07, 4.50, 4.95
TOTAL WEIGHT	APPROX. 263 kg(DRY)
OIL CAPACITY	APPROX. 9.5L
OIL VISCOSITY	SAE # 30
OIL PRESSURE	1.96 ~ 2.54 MPa CLUTCH OIL
DIRECTION OF ROTATION	INPUT C.C.W VIEWED FROM THE STERN
	OUTPUT C.W VIEWED FROM THE STERN
OIL CHANGE INTERVAL	THE FIRST 100HOURS OF INITIAL OPERATION AND EVERY 1000HOURS THEREAFTER
SHIFTING LIMIT	UNDER 50% OF THE RATED ENGINE SPEED
OIL COOLER	WATER FLOW 40 ~ 60L/min
	TEMPERATURE OF COOLING WATER MAX 32°C
OPERATING TORQUE OF SHIFTING LEVER	UNDER 2.94Nm

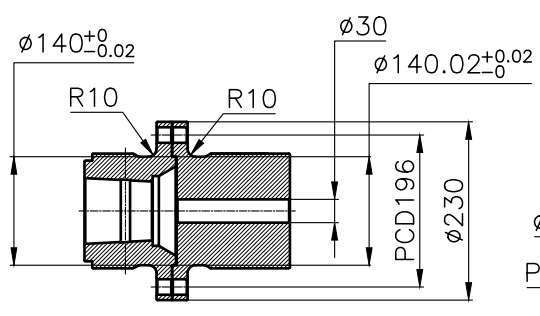


- REMARK (HOT)
- 1.HOUSING: SAE#2
  - 2.DRIVING RING: SAE 11.5"
  - 3.COUPLING TYPE : DUAL STAGE
  - 4.APPLICATION ENGINE : STANDARD

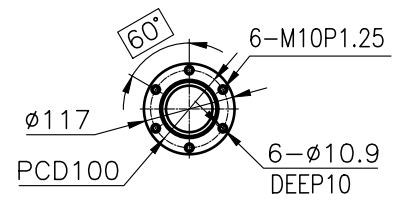


BRACKET DIMENSION

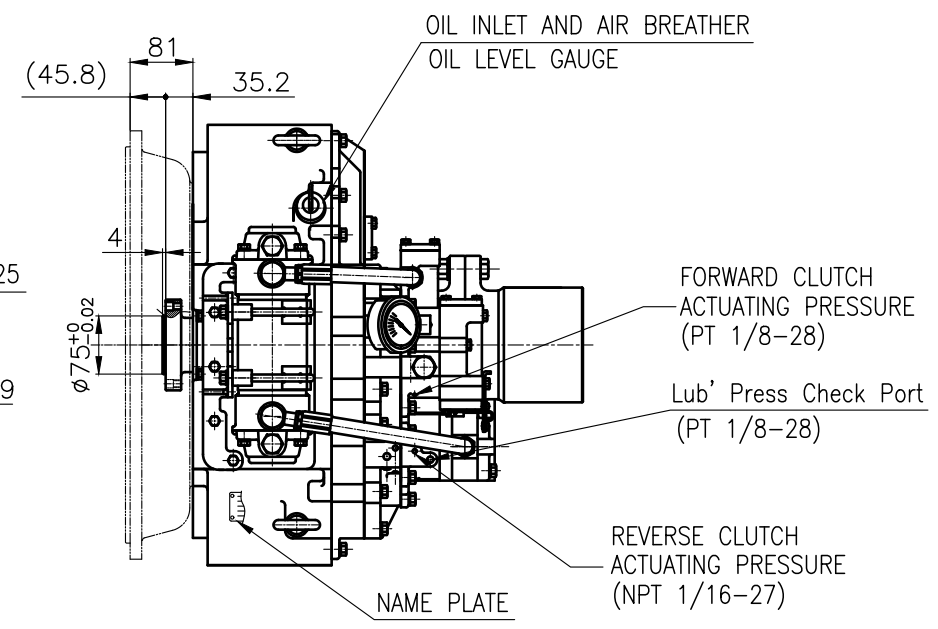
공통공차 TOLERANCE ON				번호 NO.	품 PART NO.	품 PART NAME	개수 Q'TY	재 MATERIAL	규 SIZE	비 REMARKS
분수 FRACTIONS	소수 DECIMALS	각도 ANGLES	공차 TOLERANCE	제 MATERIAL	작성 DATE	척도 SCALE	형 TYPE	DMT135HL	원도 ORIGINAL DWG. NO.	
±	±	±	±	APPROVED BY	2018.06.20	N/S	품 NAME	MARINE TRANSMISSION		
1 초과 4 이하	± 0.3	± 0.1	± 0.05	JK.Kim	TH.Cha	MA.Kim	도 DWG. NO.	13500GHA~C-2115DCH	개정(REV.) 000	
4	± 0.5	± 0.2	± 0.07	D-I INDUSTRIAL		크기 SIZE	A 3	코드 번호 CODE ID. NO.		
16	± 0.7	± 0.3	± 0.1							
16 63	± 1.2	± 0.5	± 0.2							
63 250	± 2.0	± 0.8	± 0.3							



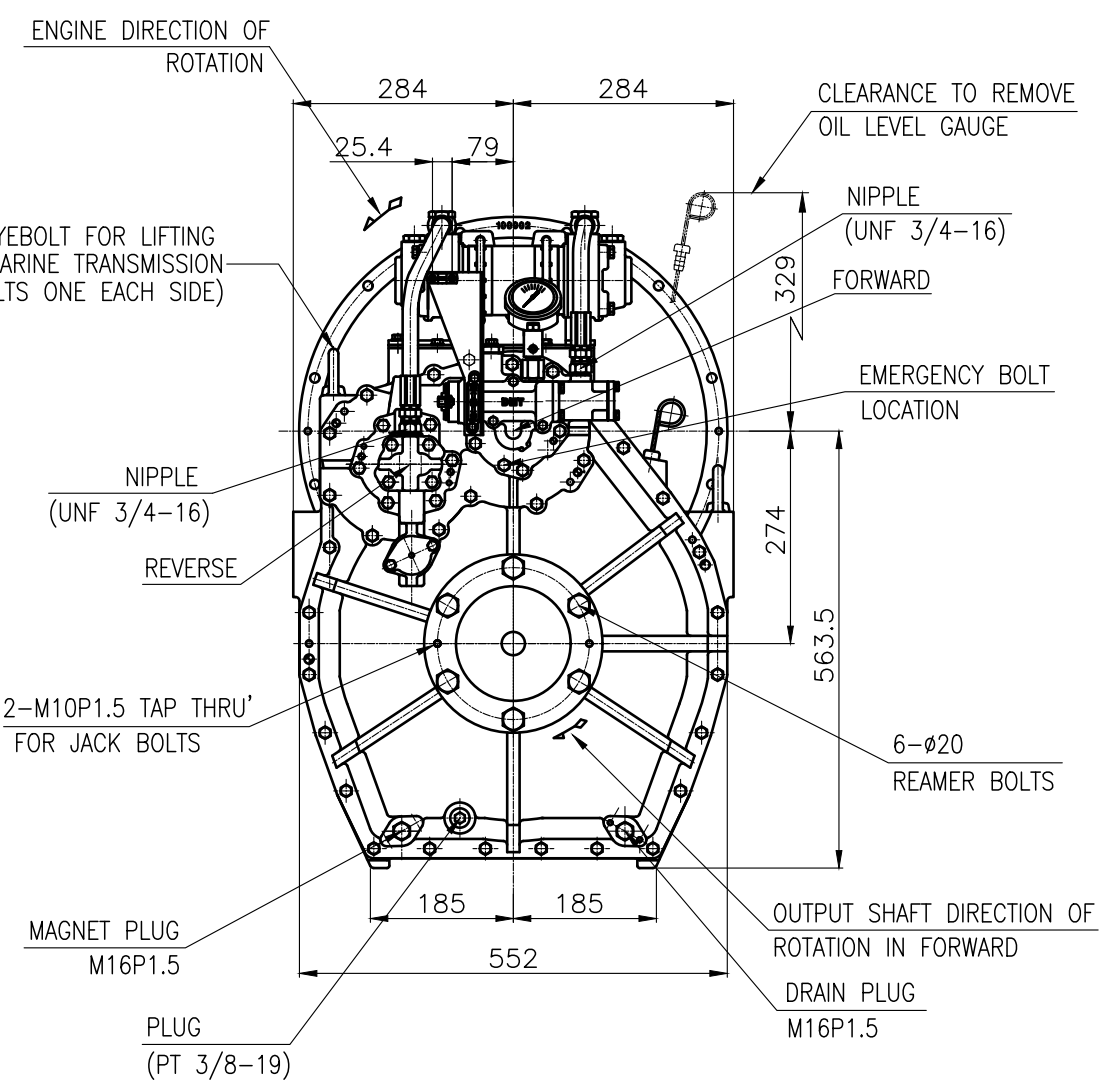
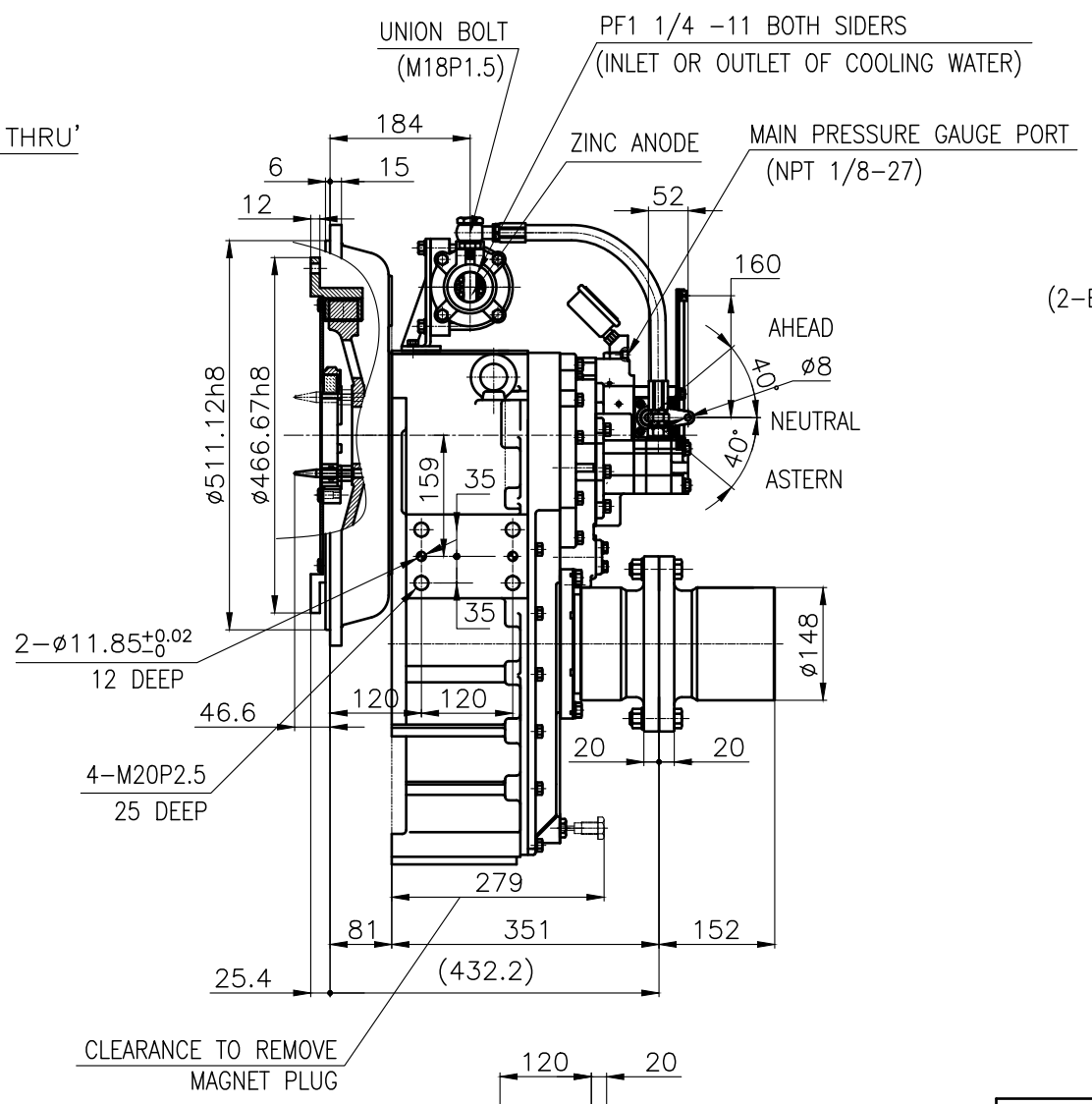
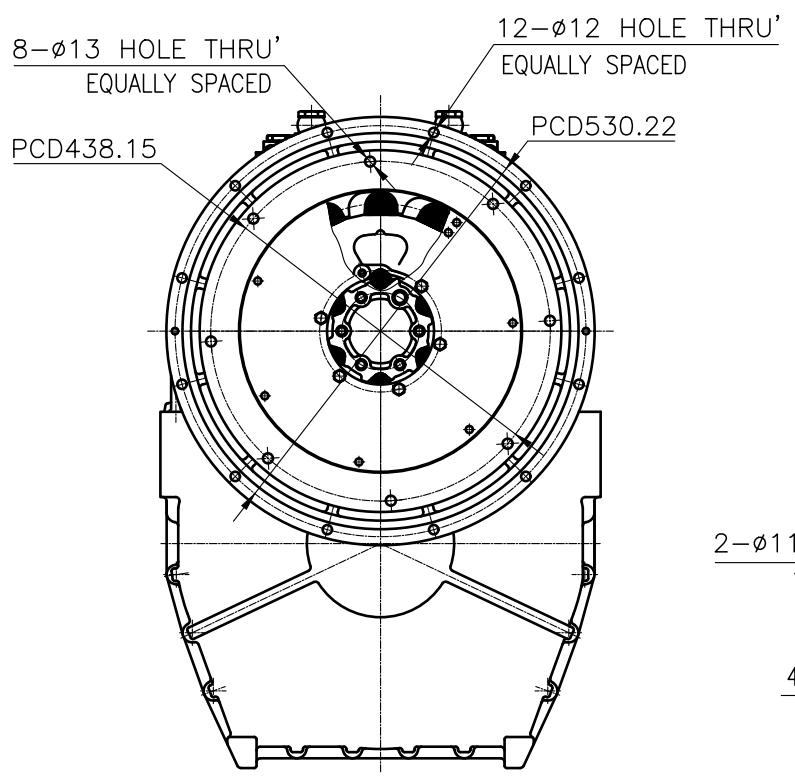
OUTPUT SHAFT COUPLING & PROPELLER COUPLING DIMENSION



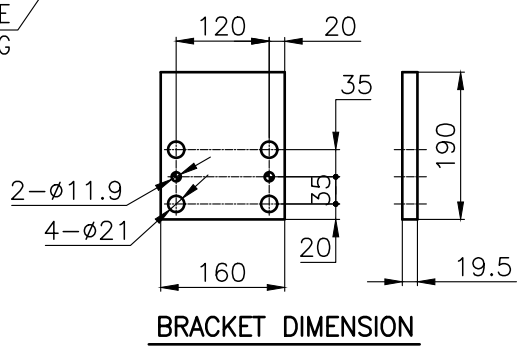
INPUT COUPLING DIMENSION



DMT 135HL MARINE TRANSMISSION SPECIFICATION			
GEAR RATIO	4.07, 4.50, 4.95		
TOTAL WEIGHT	APPROX. 263 kg(DRY)		
OIL CAPACITY	APPROX. 9.5L		
OIL VISCOSITY	SAE # 30		
OIL PRESSURE	1.96 ~ 2.54 MPa		CLUTCH OIL
DIRECTION OF ROTATION	INPUT	C.C.W VIEWED FROM THE STERN	
	OUTPUT	C.W VIEWED FROM THE STERN	
OIL CHANGE INTERVAL	THE FIRST 100HOURS OF INITIAL OPERATION AND EVERY 1000HOURS THEREAFTER		
SHIFTING LIMIT	UNDER 50% OF THE RATED ENGINE SPEED		
OIL COOLER	WATER FLOW 40 ~ 60L/min		TEMPERATURE OF COOLING WATER
			MAX 32°C
OPERATING TORQUE OF SHIFTING LEVER	UNDER 2.94Nm		



- REMARK (HOT)
- 1.HOUSING: SAE#1
  - 2.DRIVING RING: SAE 14"
  - 3.COUPLING TYPE : DUAL STAGE
  - 4.APPLICATION ENGINE : STANDARD



BRACKET DIMENSION

TOLERANCE ON				PART NO.		PART NAME		QTY		MATERIAL		SIZE		REMARKS	
분수	소수	각도	공차	번호	명	수량	재질	규격	비고						
±	±	±	±	작년	명	구분	명	명	명						
±	±	±	±	2018.06.20	DMT135HL	1	N/S	DMT135HL	DMT135HL	ORIGINAL DWG. NO.					
										MARINE TRANSMISSION					
										13500GHA~C-114DCH					
										000					
										D-I INDUSTRIAL					
										A 3					
										CODE ID. NO.					