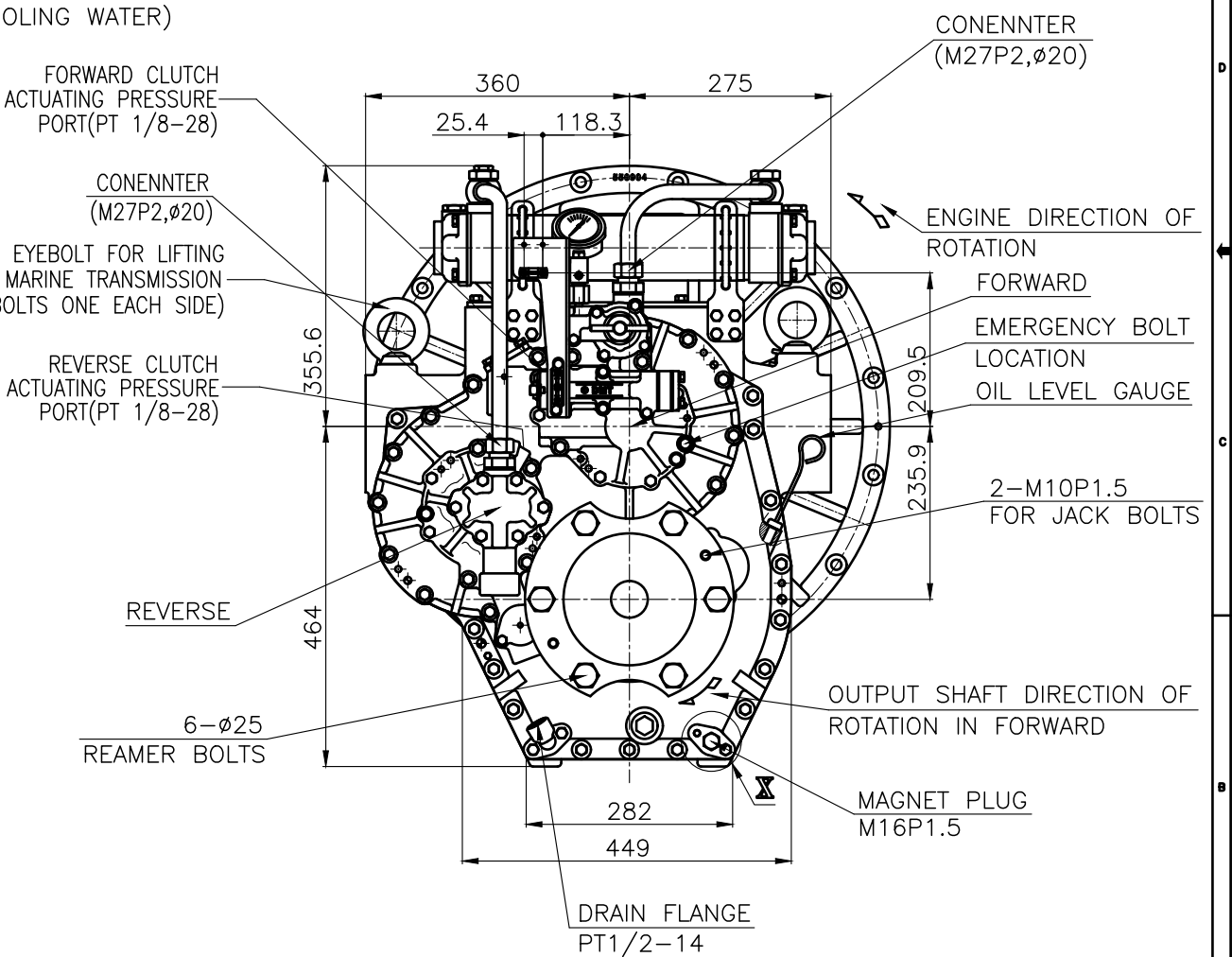
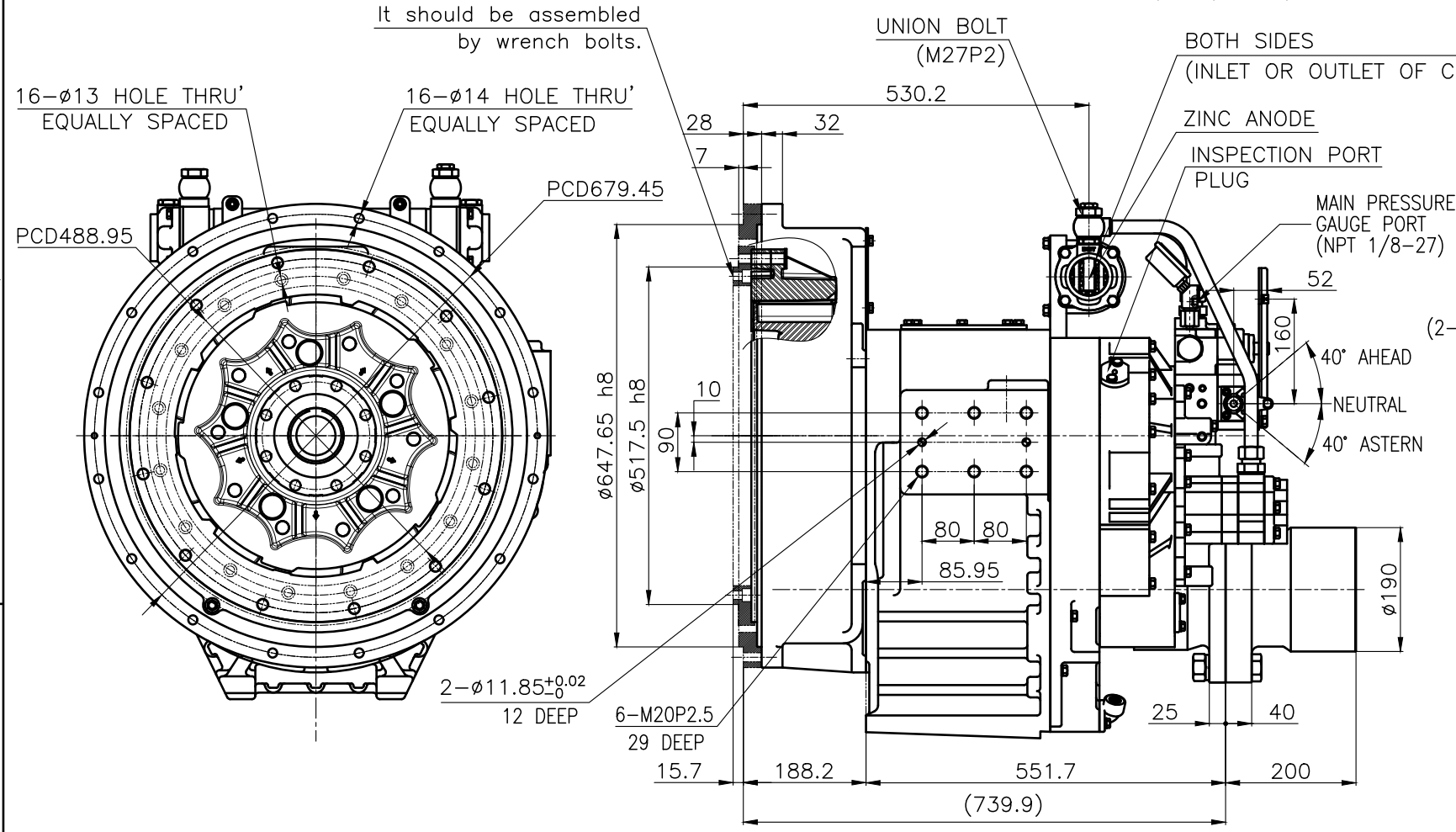
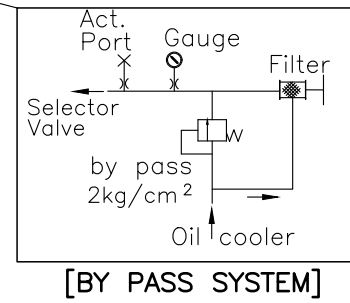
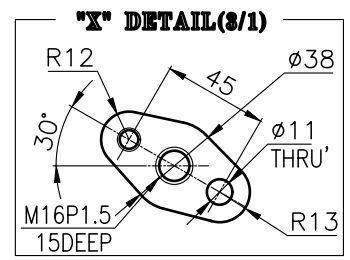
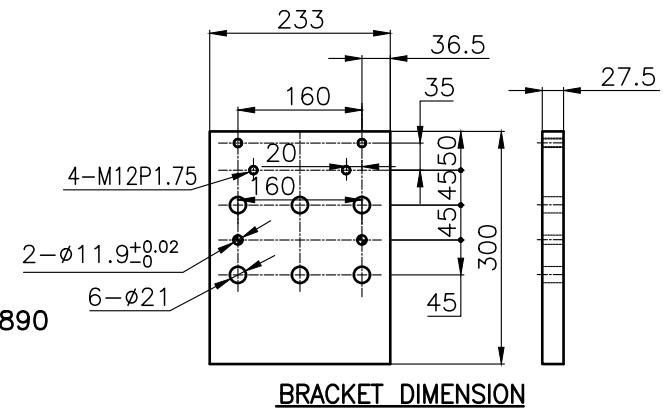


DMT550H MARINE TRANSMISSION SPECIFICATION		
GEAR RATIO	1.43, 1.64, 1.81, 2.03, 2.33, 2.60, 2.91	
TOTAL WEIGHT	APPROX. 660kg(DRY)	
OIL CAPACITY	APPROX. 9L	
OIL VISCOSITY	SAE #30	
OIL PRESSURE	1.96 ~ 2.54 MPa	CLUTCH OIL
DIRECTION OF ROTATION	INPUT	C.C.W VIEWED FROM THE STERN
IN FORWARD	OUTPUT	C.W VIEWED FROM THE STERN
OIL CHANGE INTERVAL	THE FIRST 100HOURS OF INITIAL OPERATION AND EVERY 1000HOURS THEREAFTER	
SHIFTING LIMIT	UNDER 50% OF THE RATED ENGINE SPEED	
OIL COOLER	WATER FLOW	90 ~ 120 L/m
	TEMPERATURE OF COOLING WATER	MAX 32°C
OPERATING TORQUE OF SHIFTING LEVER	UNDER 2.94Nm	



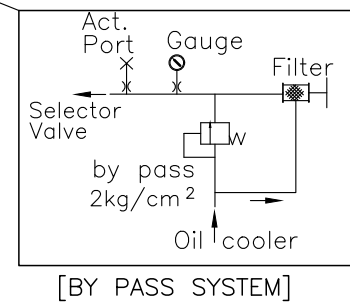
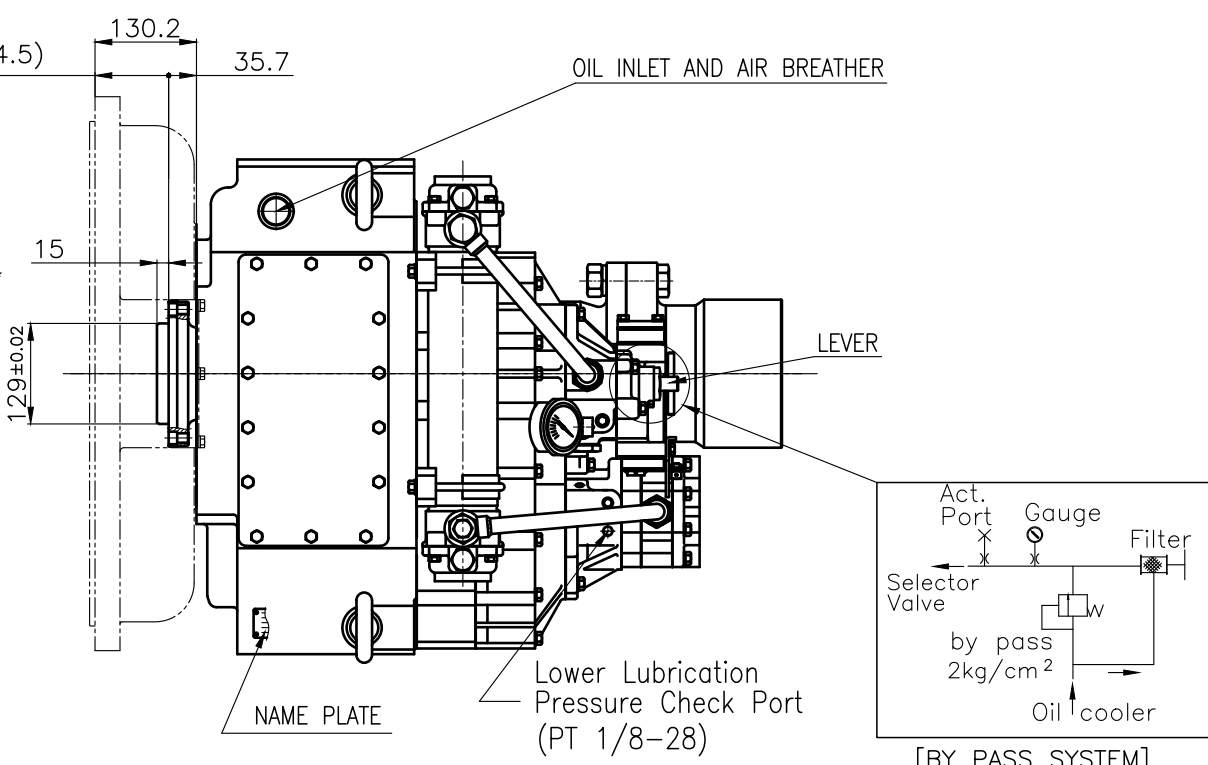
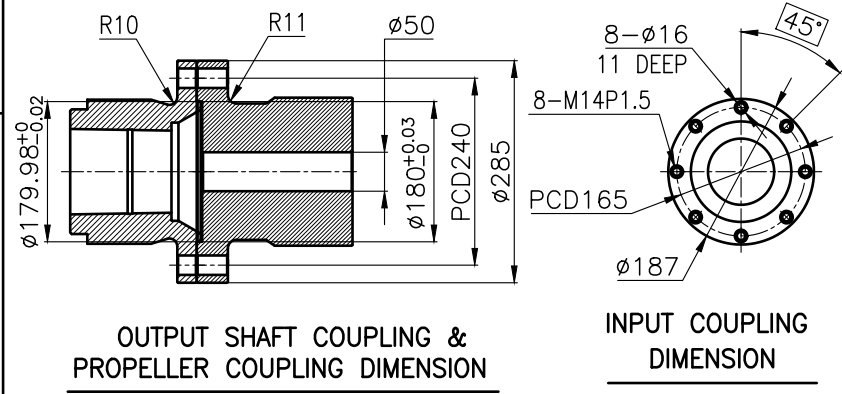
- REMARK**
- HOUSING : SAE# 0(550904)
 - DRIVING RING : SAE 16"
 - COUPLING TYPE
 - CENTA Flex Coupling : 77520802(18")
 - DUMMY(for CENTA FLEX COUPLING) : 77520890
 - DUMMY(for BELL HOUSING) : 550951



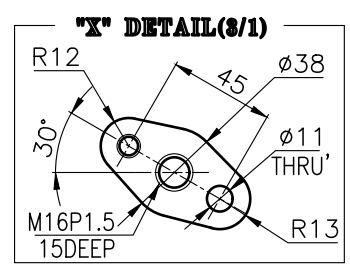
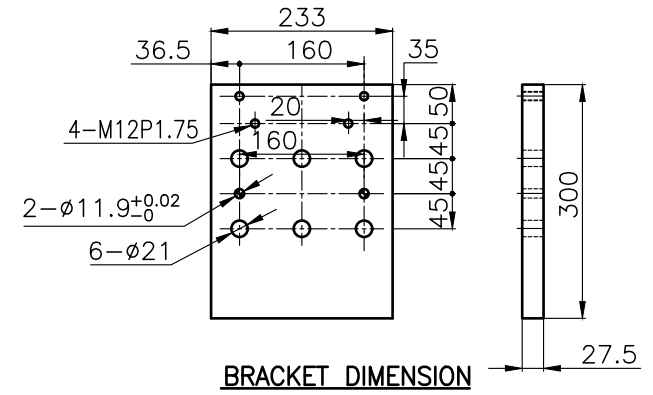
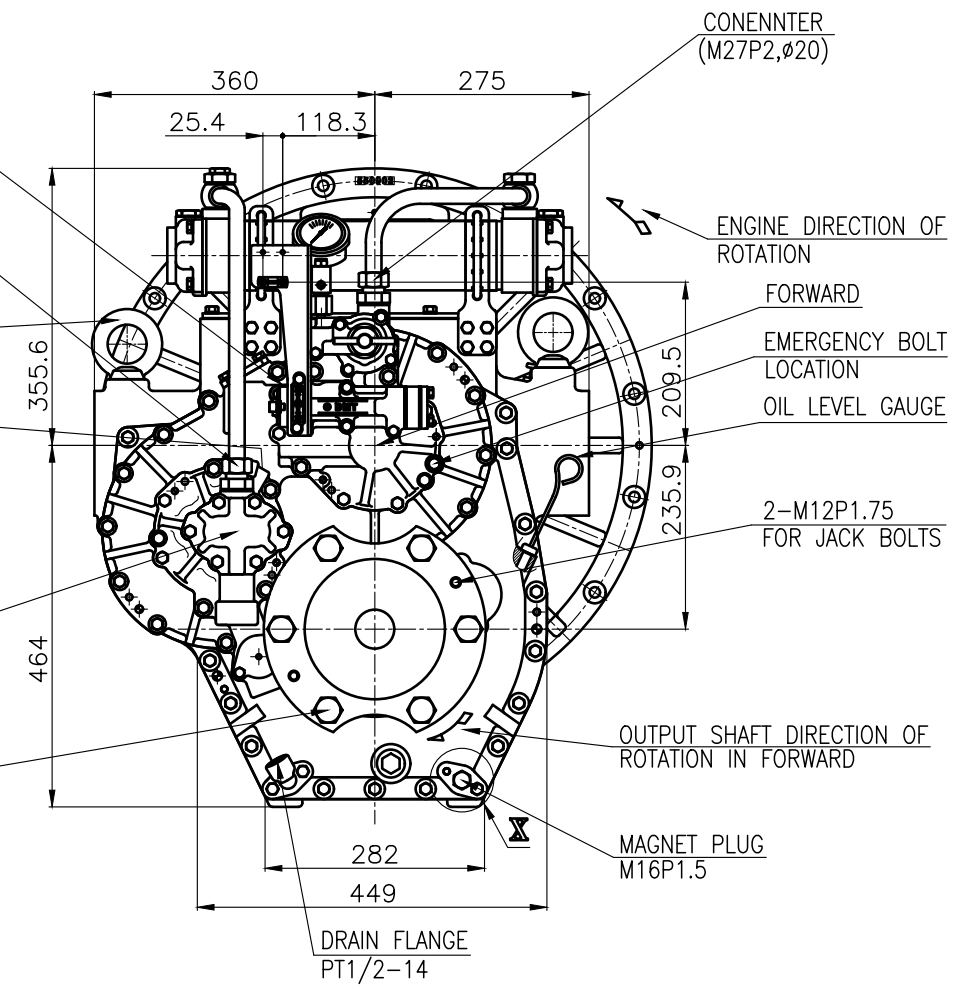
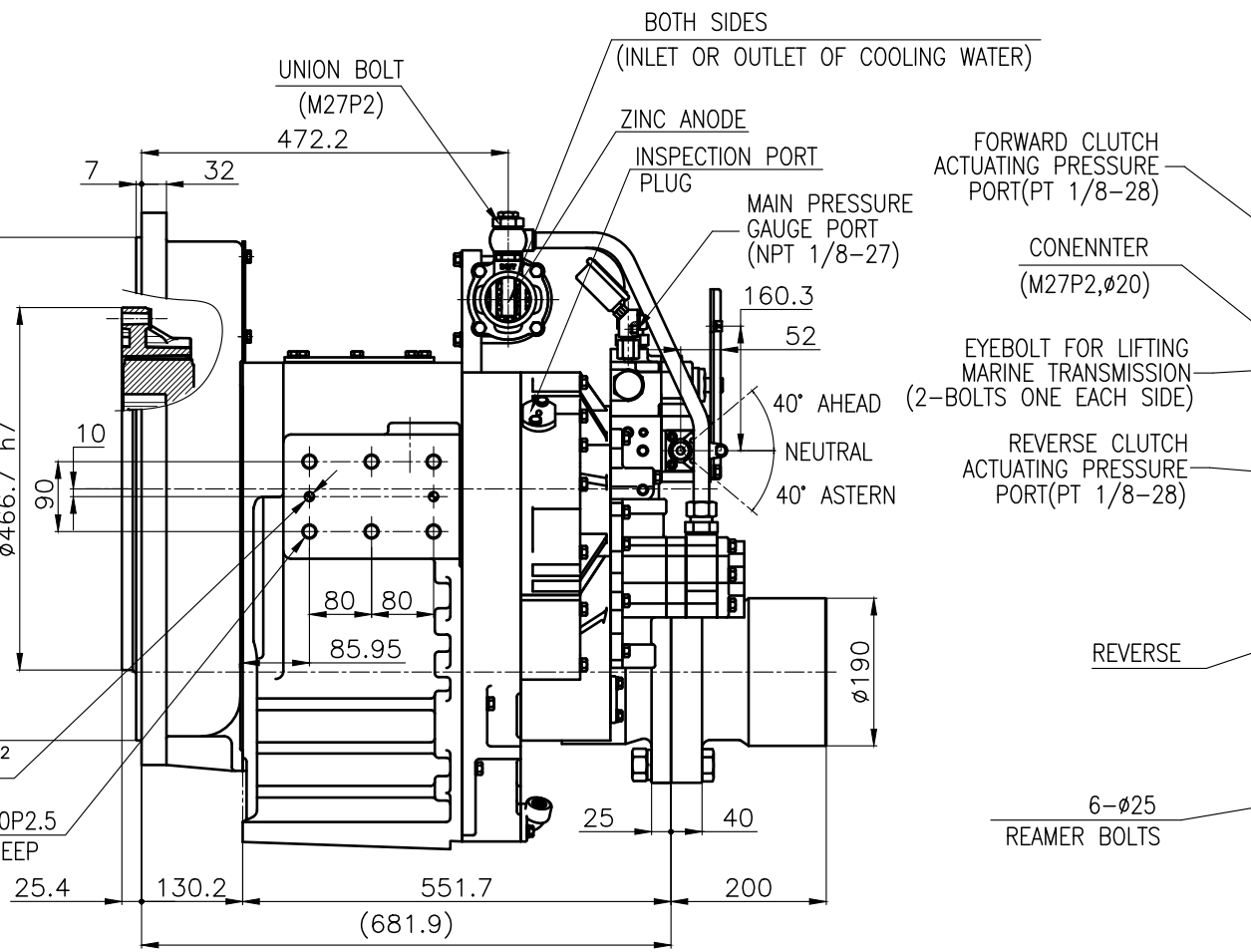
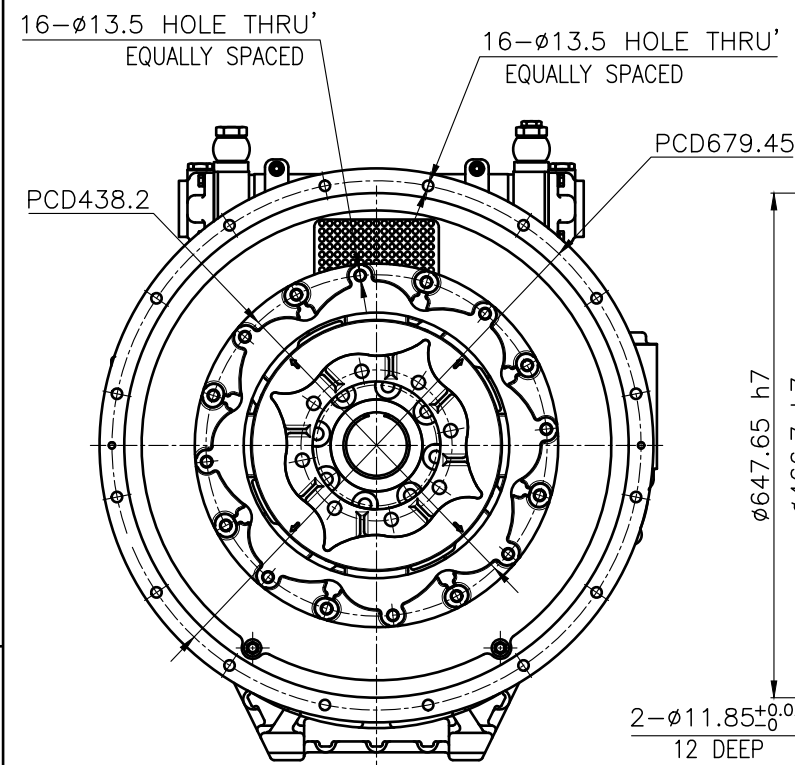
公差表 TOLERANCE ON				번호 PART NO.		품명 PART NAME		개수 Q'TY	재질 MATERIAL	규격 SIZE	비고 REMARKS
분수 FRACTIONS	소수 DECIMALS	각도 ANGLES	±	±	±	±	±	±	±	±	±
1초과 4 이하	± 0.3	± 0.1	± 0.05								
4	± 0.5	± 0.2	± 0.07								
16	± 0.7	± 0.3	± 0.1								
63	± 1.2	± 0.5	± 0.2								
250	± 2.0	± 0.8	± 0.3								

작성 DATE	2018.06.29	척도 SCALE	N/S
인도 CHECKED BY	TH.Cha	검도 DRAWN	CH.Baek
승인 APPROVED BY	JK.Kim	설계 DESIGNED	

TYPE	DMT550H	원도번호 ORIGINAL DWG. NO.	
품명 NAME	MARINE TRANSMISSION	도면번호 DWG. NO.	50000GA~G-016CFR
크기 SIZE	A 3	코드번호 CODE ID. NO.	



DMT550H MARINE TRANSMISSION SPECIFICATION		
GEAR RATIO	1.43, 1.64, 1.81, 2.03, 2.33, 2.60, 2.91	
TOTAL WEIGHT	APPROX. 660kg(DRY)	
OIL CAPACITY	APPROX. 9L	
OIL VISCOSITY	SAE #30	
OIL PRESSURE	1.96 ~ 2.54 MPa	CLUTCH OIL
DIRECTION OF ROTATION	INPUT	C.C.W VIEWED FROM THE STERN
	OUTPUT	C.W VIEWED FROM THE STERN
OIL CHANGE INTERVAL	THE FIRST 100HOURS OF INITIAL OPERATION AND EVERY 1000HOURS THEREAFTER	
SHIFTING LIMIT	UNDER 50% OF THE RATED ENGINE SPEED	
OIL COOLER	WATER FLOW	90 ~ 120 L/m
	TEMPERATURE OF COOLING WATER	MAX 32°C
OPERATING TORQUE OF SHIFTING LEVER	UNDER 2.94Nm	



- REMARK**
- HOUSING : SAE# 0
 - DRIVING RING : SAE 14"
 - COUPLING TYPE
CENTA Flex Coupling (77318801)

公差 TOLERANCE ON		번호 NO.	품 PART NO.	명 PART NAME	개수 QTY	재 MATERIAL	구 SIZE	비 REMARKS
분수 FRACTIONS	소수 DECIMALS	작성 DATE 2018.04.16		척도 SCALE N/S	TYPE		원도 번호 ORIGINAL DWG. NO.	
±	±	±	±	±	NAME		계량 (REV.)	
±	±	±	±	±	DMT550H		000	
±	±	±	±	±	MARINE TRANSMISSION			
±	±	±	±	±	50000GA~G-014CFR			
±	±	±	±	±	D-I INDUSTRIAL		코드 번호 CODE ID. NO.	
±	±	±	±	±	A 3			