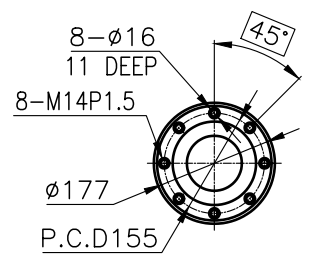
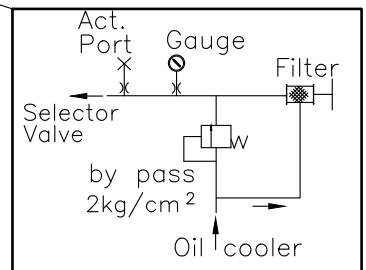
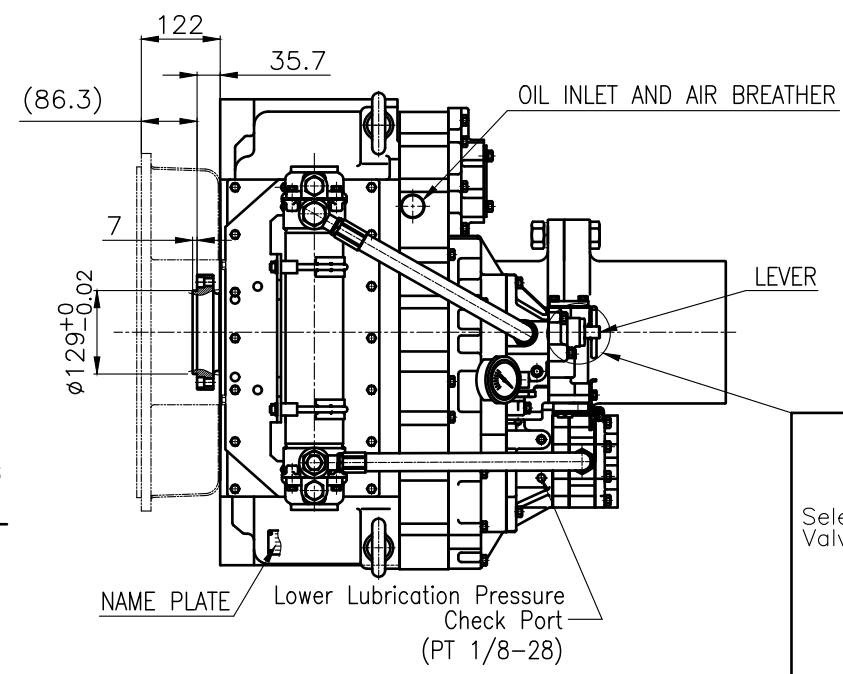


OUTPUT SHAFT COUPLING & PROPELLER COUPLING DIMENSION

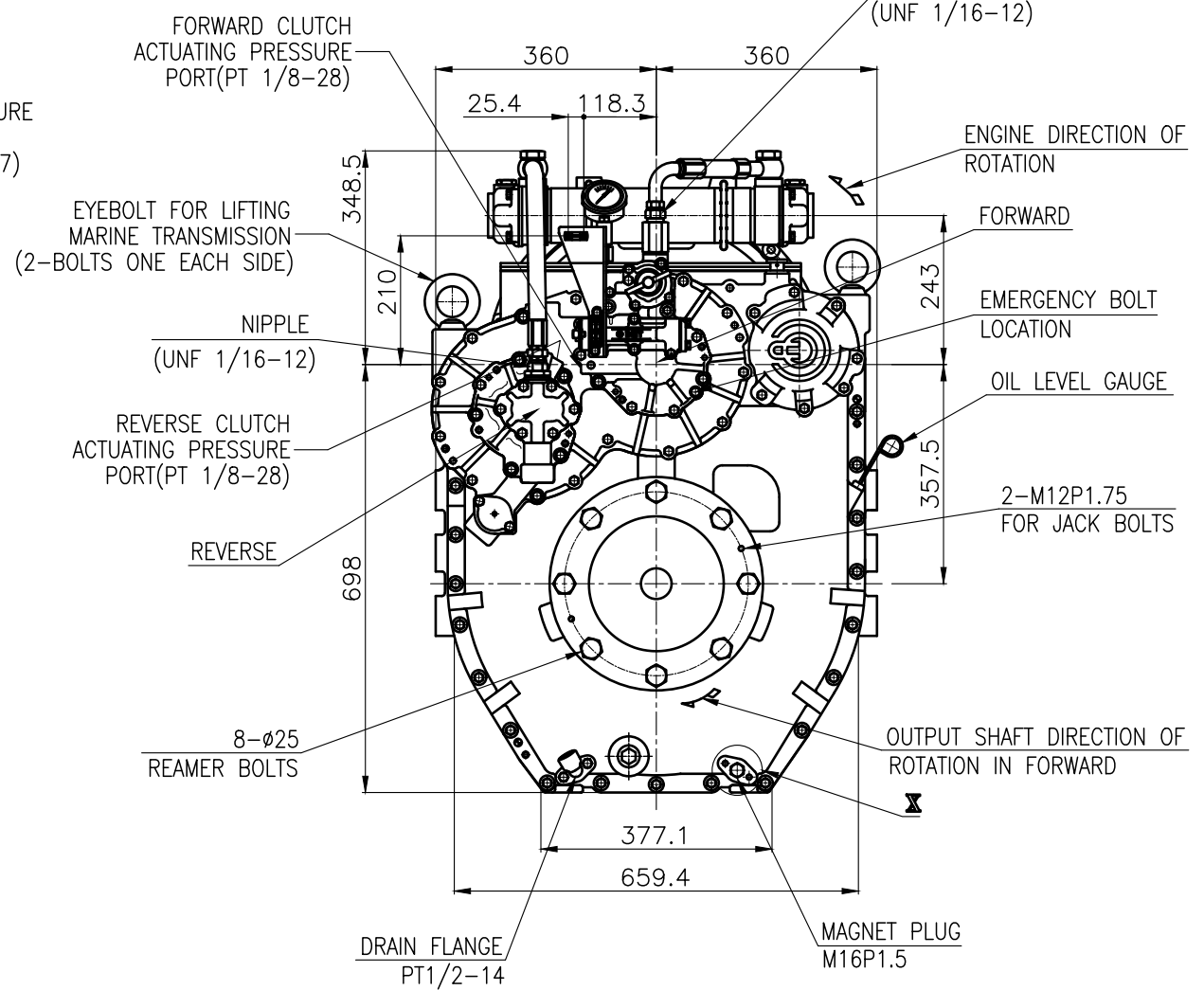
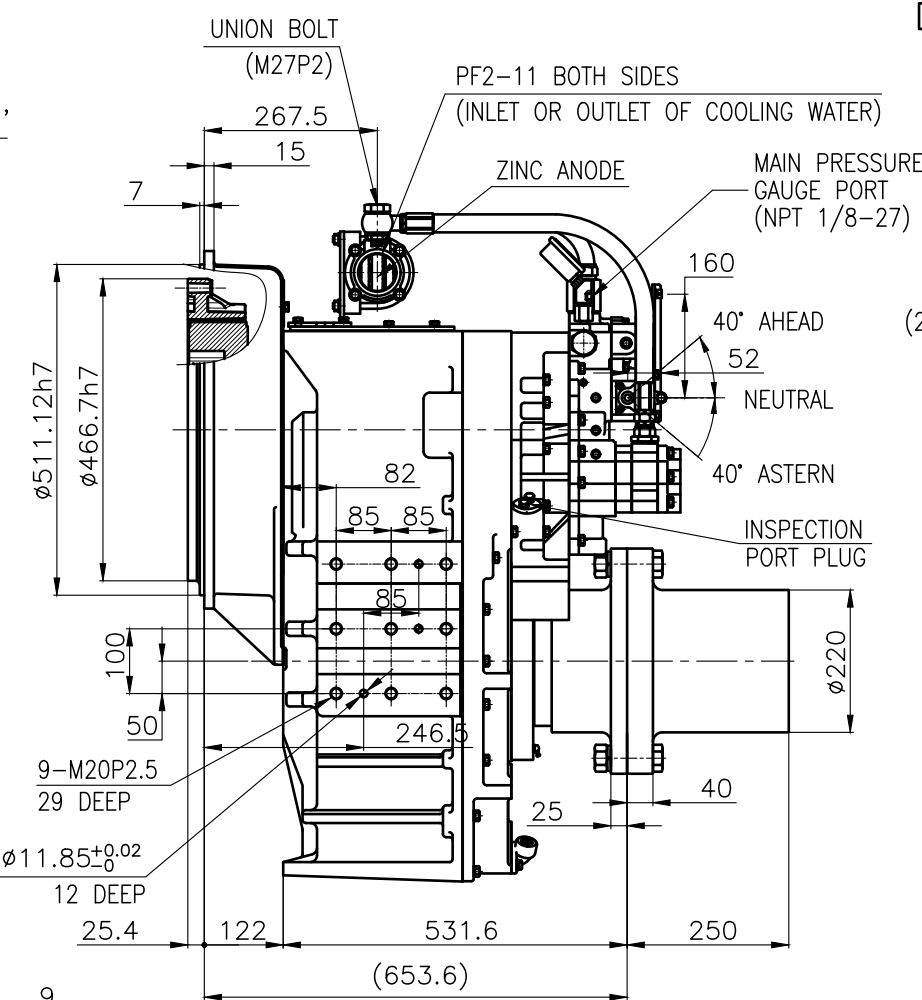
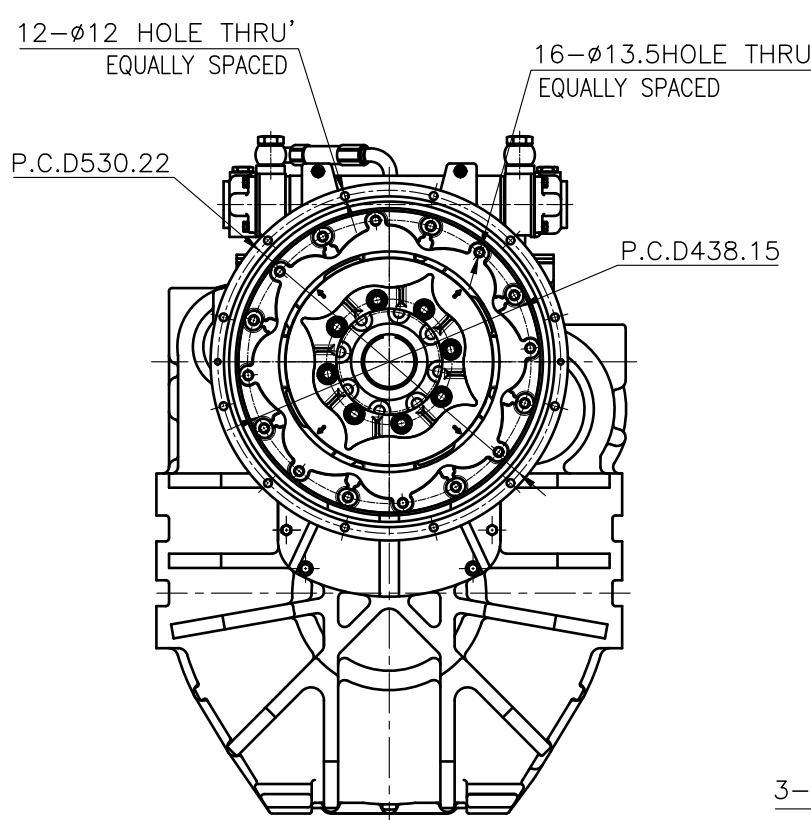


INPUT COUPLING DIMENSION

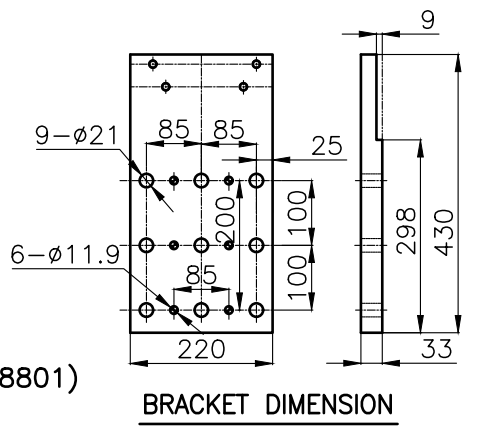


[BY PASS SYSTEM]

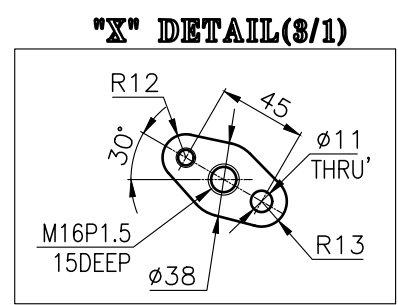
DMT460HL MARINE TRSANMISSION SPECIFICATION	
GEAR RATIO	3.02, 3.28, 3.56, 4.07, 4.48, 4.95
TOTAL WEIGHT	APPROX. 962 Kg(DRY)
OIL CAPACITY	APPROX. 18 L
OIL VISCOSITY	SAE # 30
OIL PRESSURE	1.96 ~ 2.54 MPa CLUTCH OIL
DIRECTION OF ROTATION	INPUT C.C.W VIEWED FROM THE STERN
IN FORWARD	OUTPUT C.W VIEWED FROM THE STERN
OIL CHANGE INTERVAL	THE FIRST 100HOURS OF INITIAL OPERATION AND EVERY 1000HOURS THEREAFTER
SHIFTING LIMIT	UNDER 50% OF THE RATED ENGINE SPEED
OIL COOLER	WATER FLOW 90 ~ 120 L/min
	TEMPERATURE OF COOLING WATER MAX 32°C
OPERATING TORQUE OF SHIFTING LEVER	UNDER 2.94Nm



REMARK
 1.HOUSING : SAE# 1
 2.DRIVING RING : SAE 14"
 3.COUPLING TYPE
 CENTA Flex Coupling (77318801)



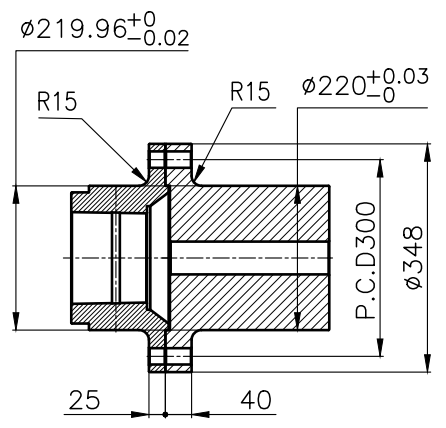
BRACKET DIMENSION



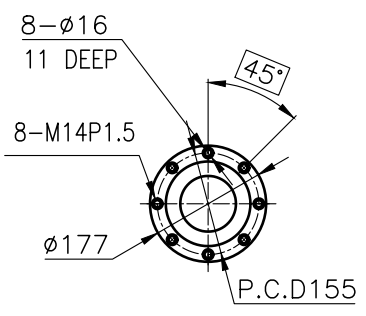
'X' DETAIL(3/1)

公差 TOLERANCE ON		변호 NO.		품 PART NO.		품 PART 명		개 수 Q'TY		재 MATERIAL		규 SIZE		비 REMARKS	
분수 FRACTIONS	소수 DECIMALS	각도 ANGLES	제 MATERIAL	작성 DATE	척도 SCALE	형 식 TYPE	원도 번호 ORIGINAL DWG. NO.								
±	±	±	2018.06.29 <td>N/S <td>DMT460HL <td colspan="2">ORIGINAL DWG. NO.</td> </td></td>	N/S <td>DMT460HL <td colspan="2">ORIGINAL DWG. NO.</td> </td>	DMT460HL <td colspan="2">ORIGINAL DWG. NO.</td>	ORIGINAL DWG. NO.									
검사 가 공		승 인		검 도		제 도 설 계		품 명 NAME		도 번 DWG. NO.		개 정 (REV.)			
구 본	조 급	종 급	APPROVED BY	CHECKED BY	DRAWN	DESIGNED	MARINE TRANSMISSION		46000GHA~F-114CFR		000				
1 초과 4 이하	± 0.3	± 0.1	JK.Kim	TH.Cha	CH.Baek		도 번호		46000GHA~F-114CFR		000				
4	± 0.5	± 0.2					크 기 SIZE		A 3		코 드 번호 CODE ID. NO.				
16	± 0.7	± 0.3													
63	± 1.2	± 0.5													
250	± 2.0	± 0.8													

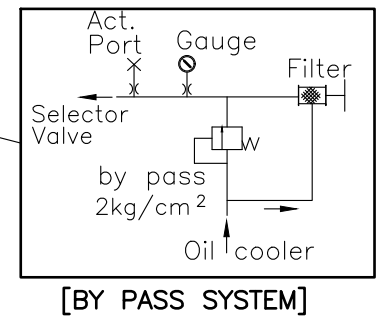
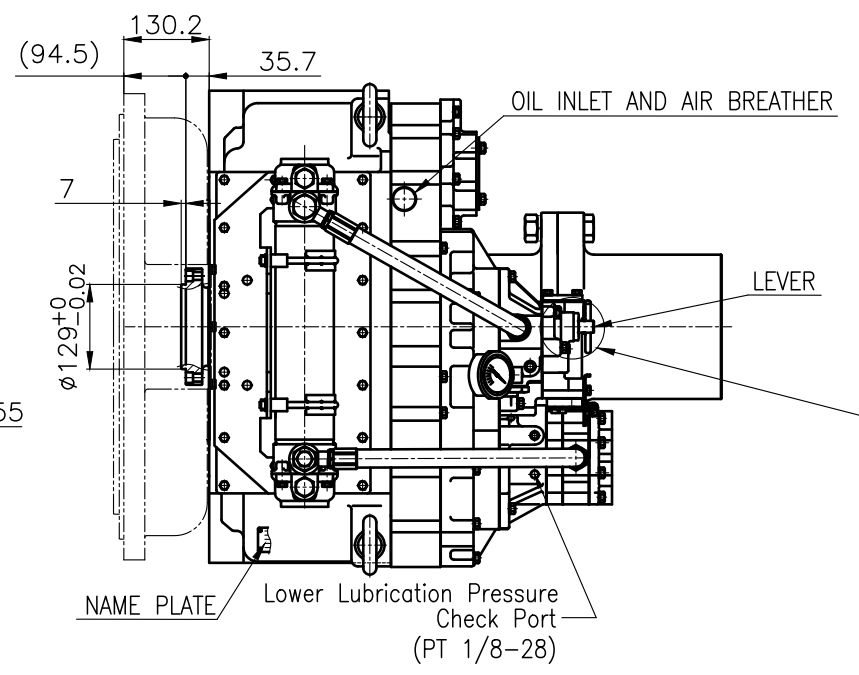
D-I INDUSTRIAL



OUTPUT SHAFT COUPLING & PROPELLER COUPLING DIMENSION

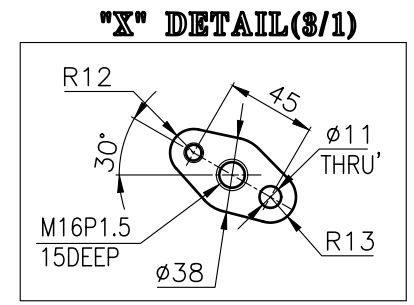
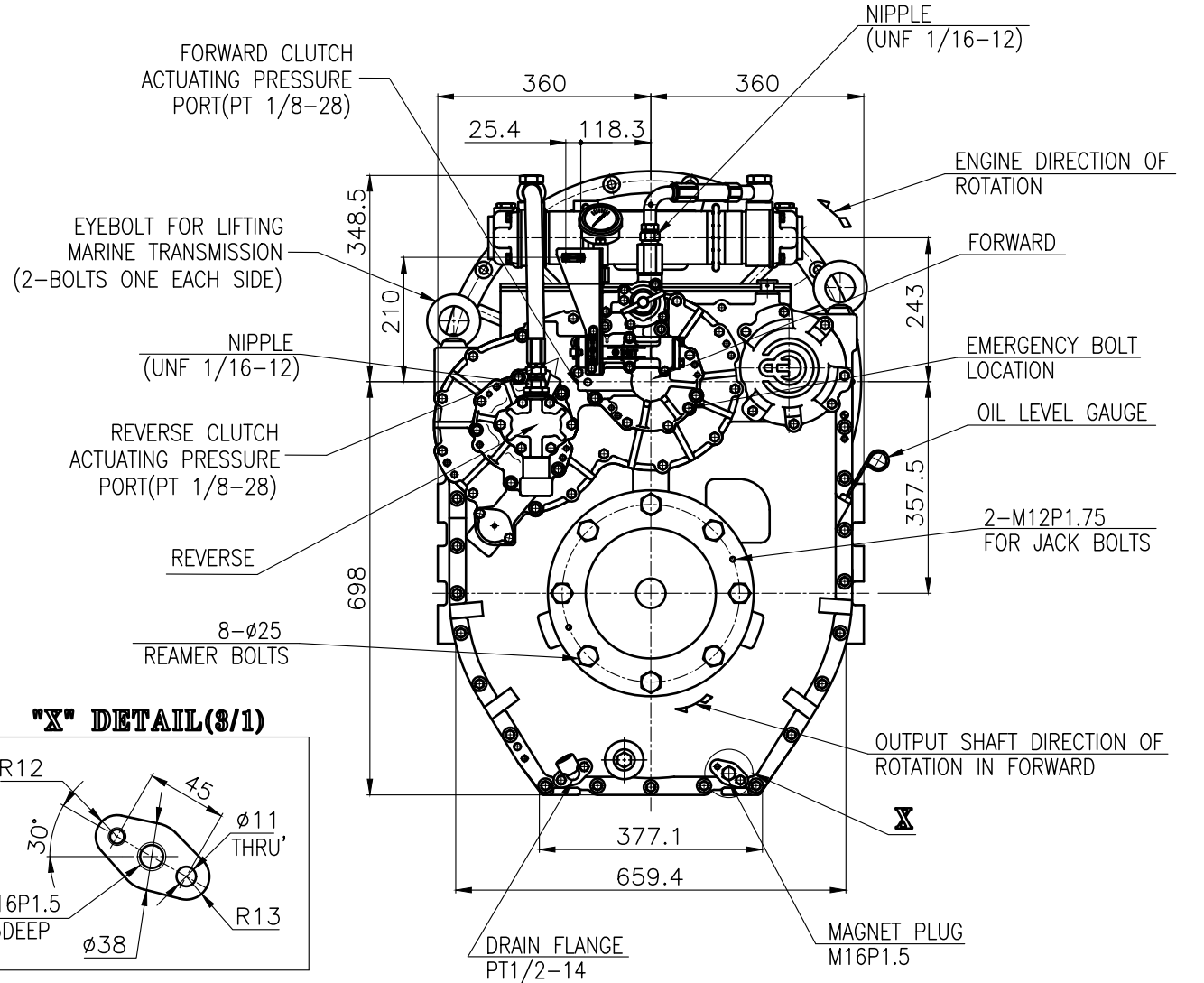
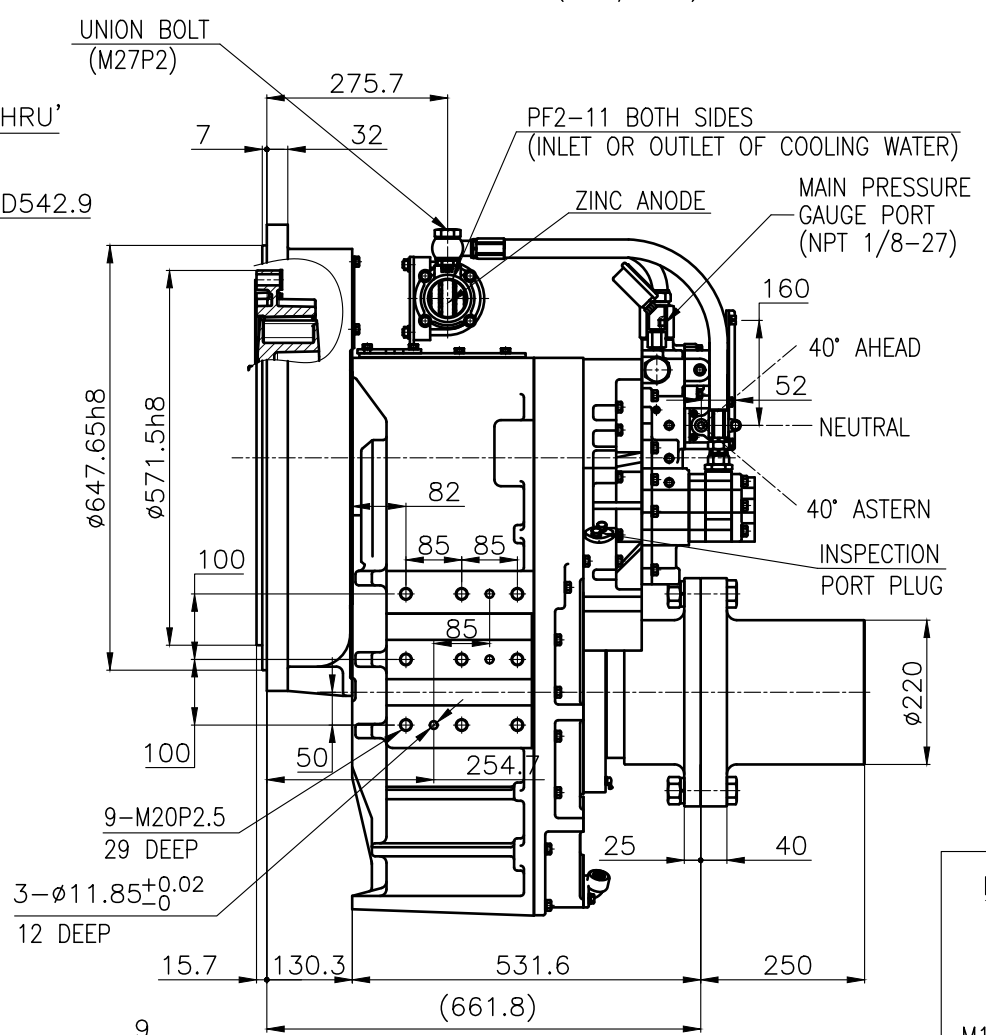
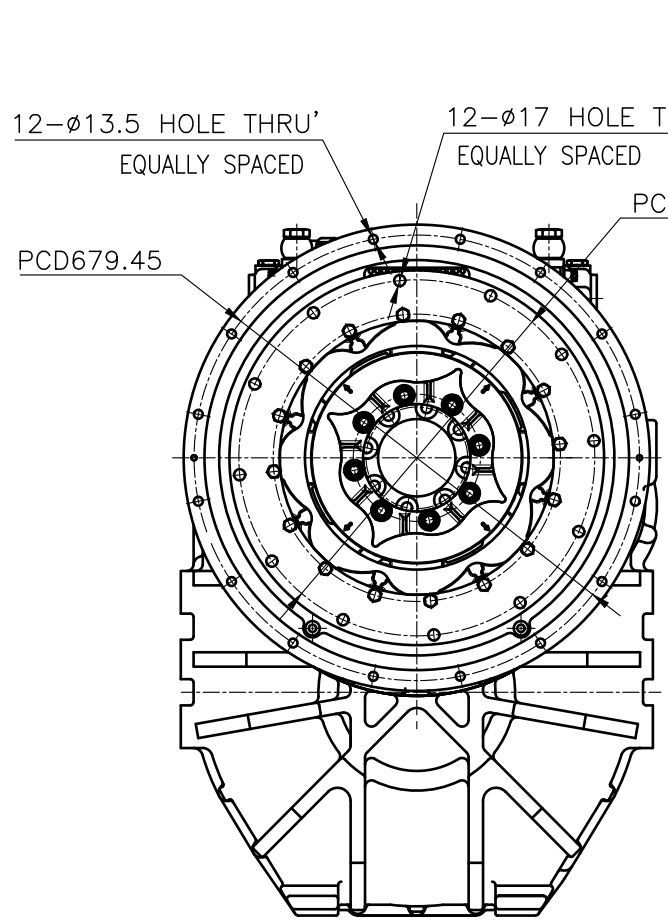


INPUT COUPLING DIMENSION

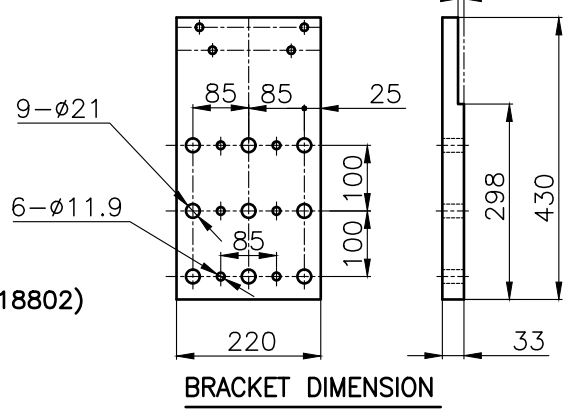


[BY PASS SYSTEM]

DMT460HL MARINE TRANSMISSION SPECIFICATION		
GEAR RATIO	3.02, 3.28, 3.56, 4.07, 4.48, 4.95	
TOTAL WEIGHT	APPROX. 979 Kg(DRY)	
OIL CAPACITY	APPROX. 18L	
OIL VISCOSITY	SAE # 30	
OIL PRESSURE	1.96 ~ 2.54 MPa	CLUTCH OIL
DIRECTION OF ROTATION	INPUT	C.C.W VIEWED FROM THE STERN
	OUTPUT	C.W VIEWED FROM THE STERN
OIL CHANGE INTERVAL	THE FIRST 100HOURS OF INITIAL OPERATION AND EVERY 1000HOURS THEREAFTER	
SHIFTING LIMIT	UNDER 50% OF THE RATED ENGINE SPEED	
OIL COOLER	WATER FLOW 90 ~ 120 L/min	
	TEMPERATURE OF COOLING WATER MAX 32°C	
OPERATING TORQUE OF SHIFTING LEVER	UNDER 2.94Nm	

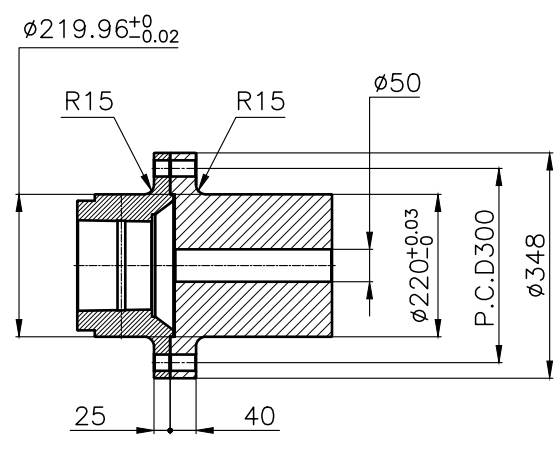


REMARK
 1.HOUSING : SAE# 0
 2.DRIVING RING : SAE 18"
 3.COUPLING TYPE :
 - CENTA Flex Coupling (77318802)

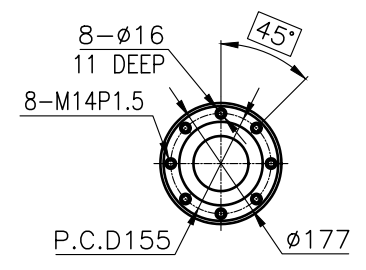


BRACKET DIMENSION

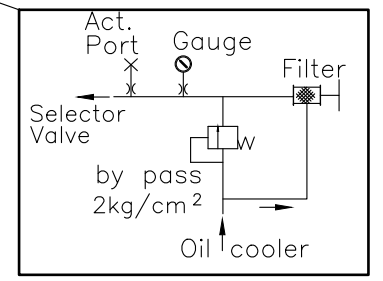
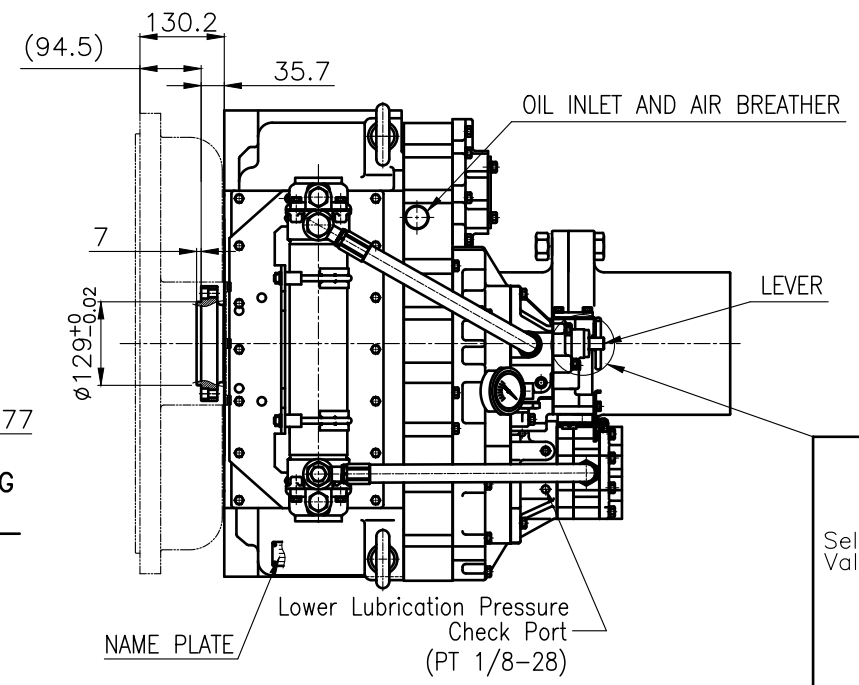
TOLERANCE ON				PART NO.		PART NAME		QTY	MATERIAL	SIZE	REMARKS
FRACTIONS	DECIMALS	ANGLES		NO.	REV.						
±	±	±	±								
1 초과 4 이하 ±0.3 ±0.1 ±0.05 4 16 ±0.5 ±0.2 ±0.07 16 63 ±0.7 ±0.3 ±0.1 63 250 ±1.2 ±0.5 ±0.2 250 1000 ±2.0 ±0.8 ±0.3				2018.04.16 SCALE N/S		JK.Kim TH.Cha GH.Park		DMT460HL MARINE TRANSMISSION		ORIGINAL DWG. NO. 46000GHA~F-018CFR 000	
D-I INDUSTRIAL				SIZE A 3		CODE ID. NO.					



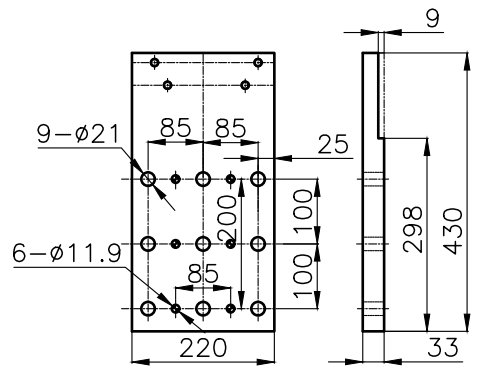
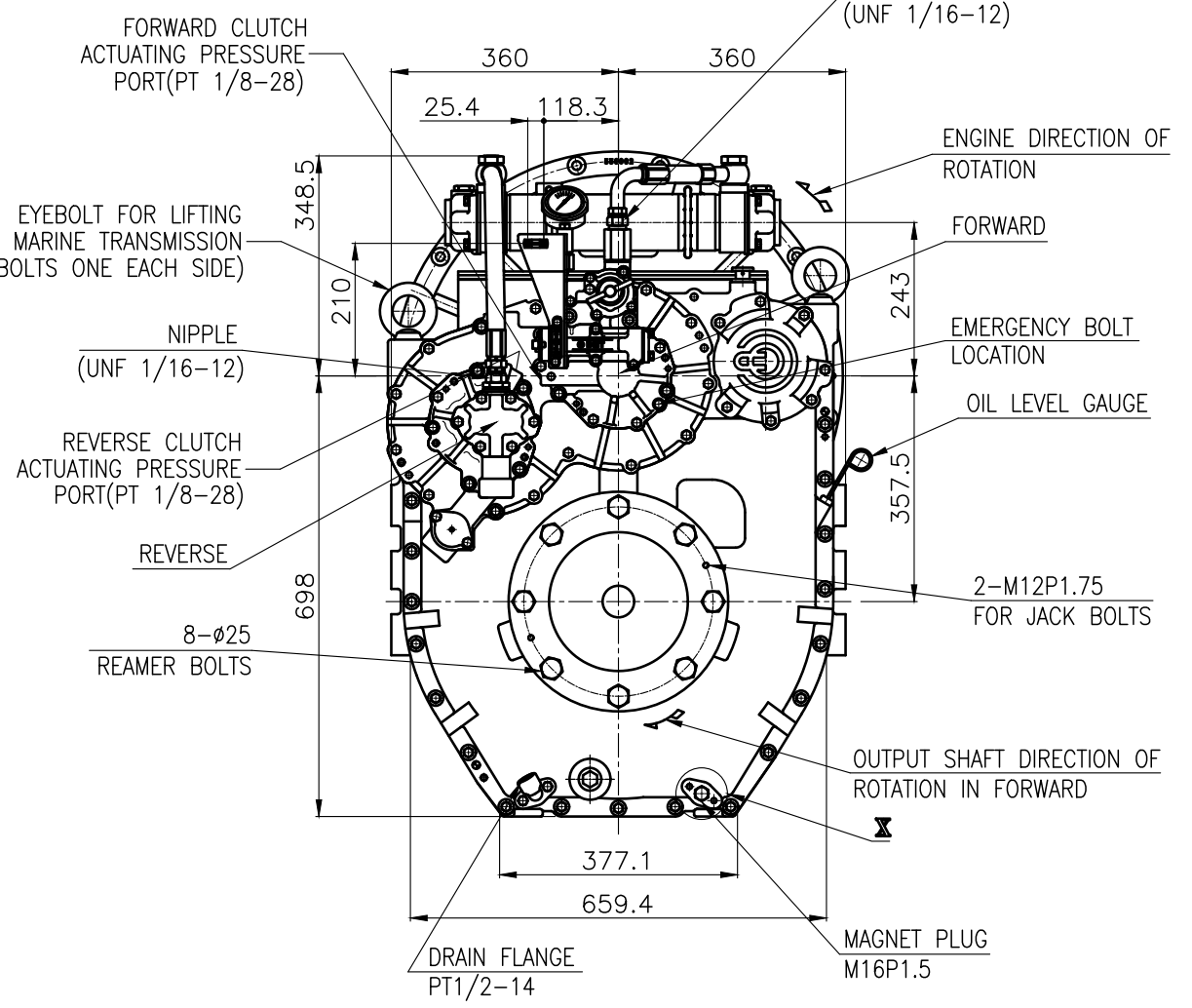
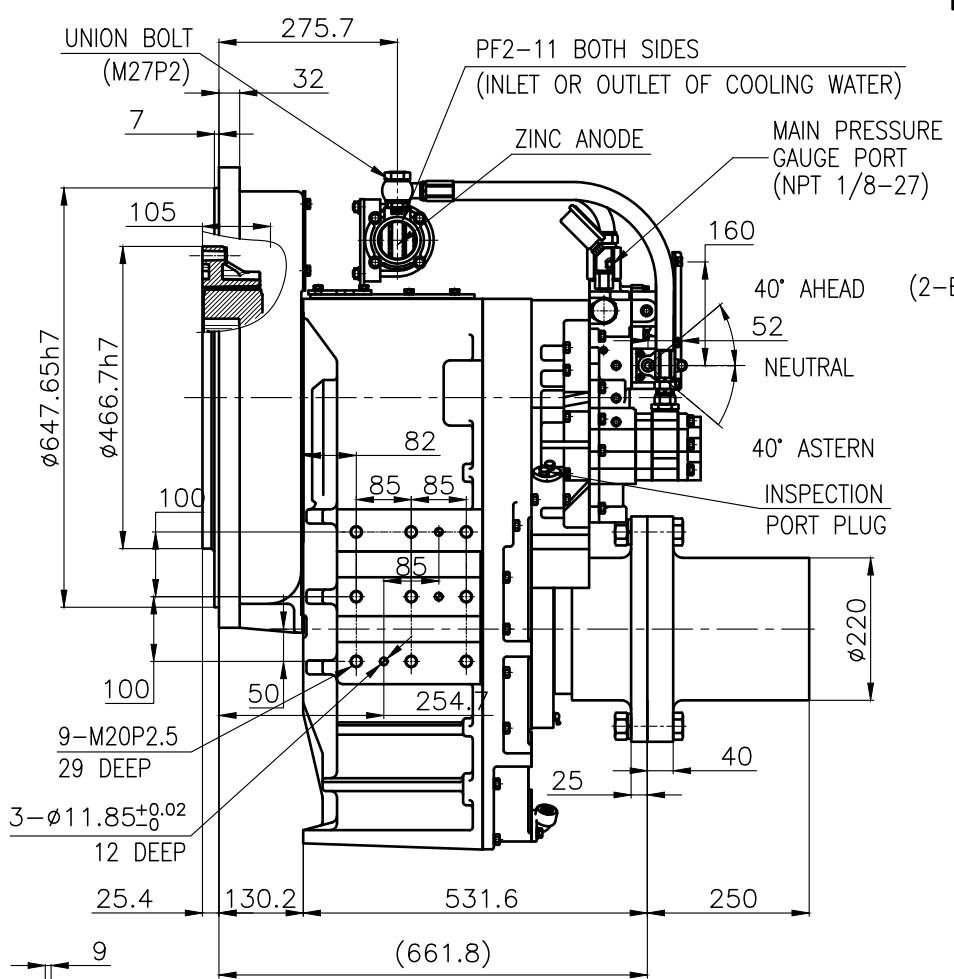
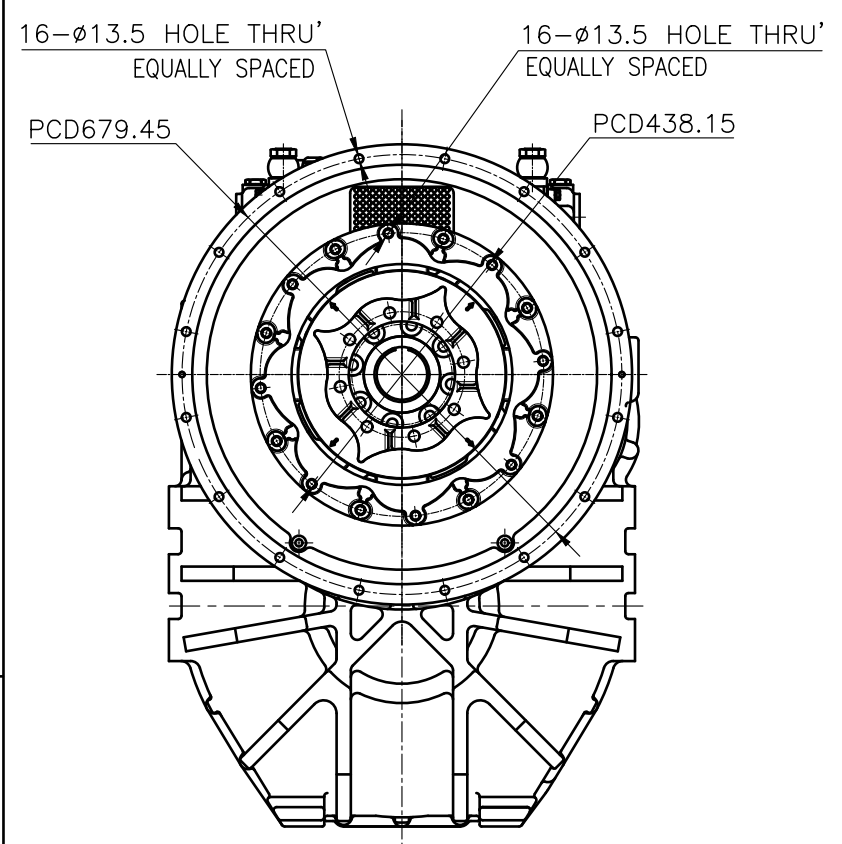
OUTPUT SHAFT COUPLING & PROPELLER COUPLING DIMENSION



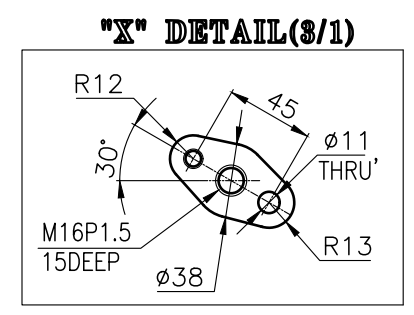
INPUT COUPLING DIMENSION



DMT460HL MARINE TRSANMISSION SPECIFICATION		
GEAR RATIO	3.02, 3.28, 3.56, 4.07, 4.48, 4.95	
TOTAL WEIGHT	APPROX. 1005 Kg(DRY)	
OIL CAPACITY	APPROX. 18 L	
OIL VISCOSITY	SAE # 30	
OIL PRESSURE	1.96 ~ 2.54 MPa	CLUTCH OIL
DIRECTION OF ROTATION	INPUT	C.C.W VIEWED FROM THE STERN
IN FORWARD	OUTPUT	C.W VIEWED FROM THE STERN
OIL CHANGE INTERVAL	THE FIRST 100HOURS OF INITIAL OPERATION AND EVERY 1000HOURS THEREAFTER	
SHIFTING LIMIT	UNDER 50% OF THE RATED ENGINE SPEED	
OIL COOLER	WATER FLOW 90 ~ 120 L/min	
	TEMPERATURE OF COOLING WATER	MAX 32°C
OPERATING TORQUE OF SHIFTING LEVER	UNDER 2.94Nm	

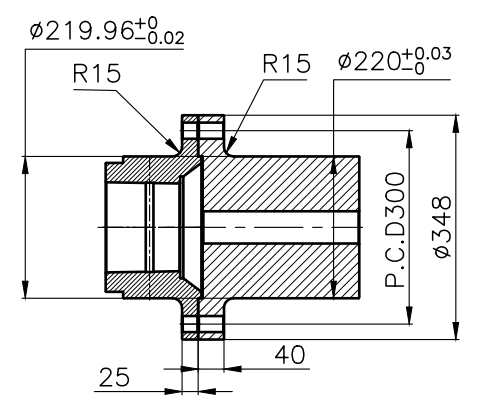


BRACKET DIMENSION

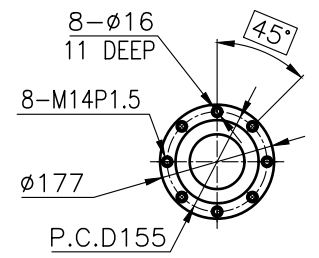


REMARK
 1.HOUSING : SAE# 0
 2.DRIVING RING : SAE 14"
 3.COUPLING TYPE
 CENTA Flex Coupling (77318804)

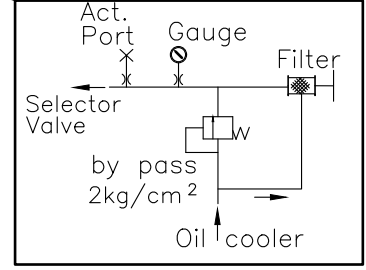
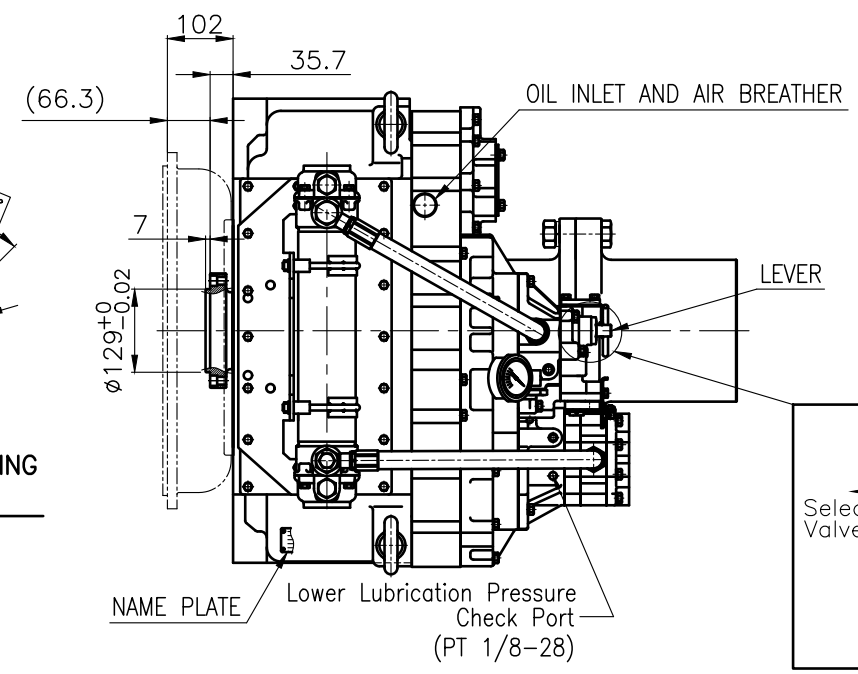
공통공차 TOLERANCE ON				번호 NO.	품 PART NO.	품 PART NAME	개수 Q'TY	재 MATERIAL	규 SIZE	비 REMARKS
분수	소수	각도	각도	MATERIAL DATE 2018.06.29 SCALE N/S APPROVED BY JK.Kim CHECKED BY TH.Cha DRAWN CH.Baek DESIGNED						
±	±	±	±	TYPE DMT460HL ORIGINAL DWG. NO. 품 MARINE TRANSMISSION 도 46000GHA~F-014CFR 개량(REV.) 000 크 기 A 3 코드 번호 CODE ID. NO.						
구	분	초	분	D-I INDUSTRIAL						
1	초과 4 이하	± 0.3	± 0.1	± 0.05						
4	16	± 0.5	± 0.2	± 0.07						
16	63	± 0.7	± 0.3	± 0.1						
63	250	± 1.2	± 0.5	± 0.2						
250	1000	± 2.0	± 0.8	± 0.3						



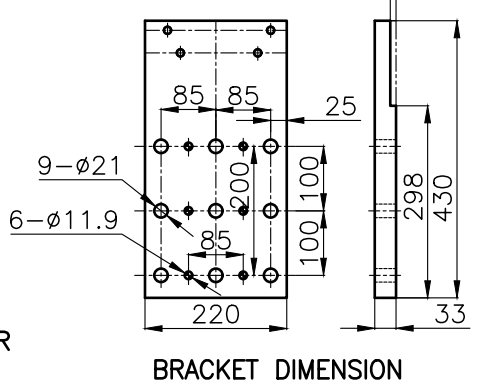
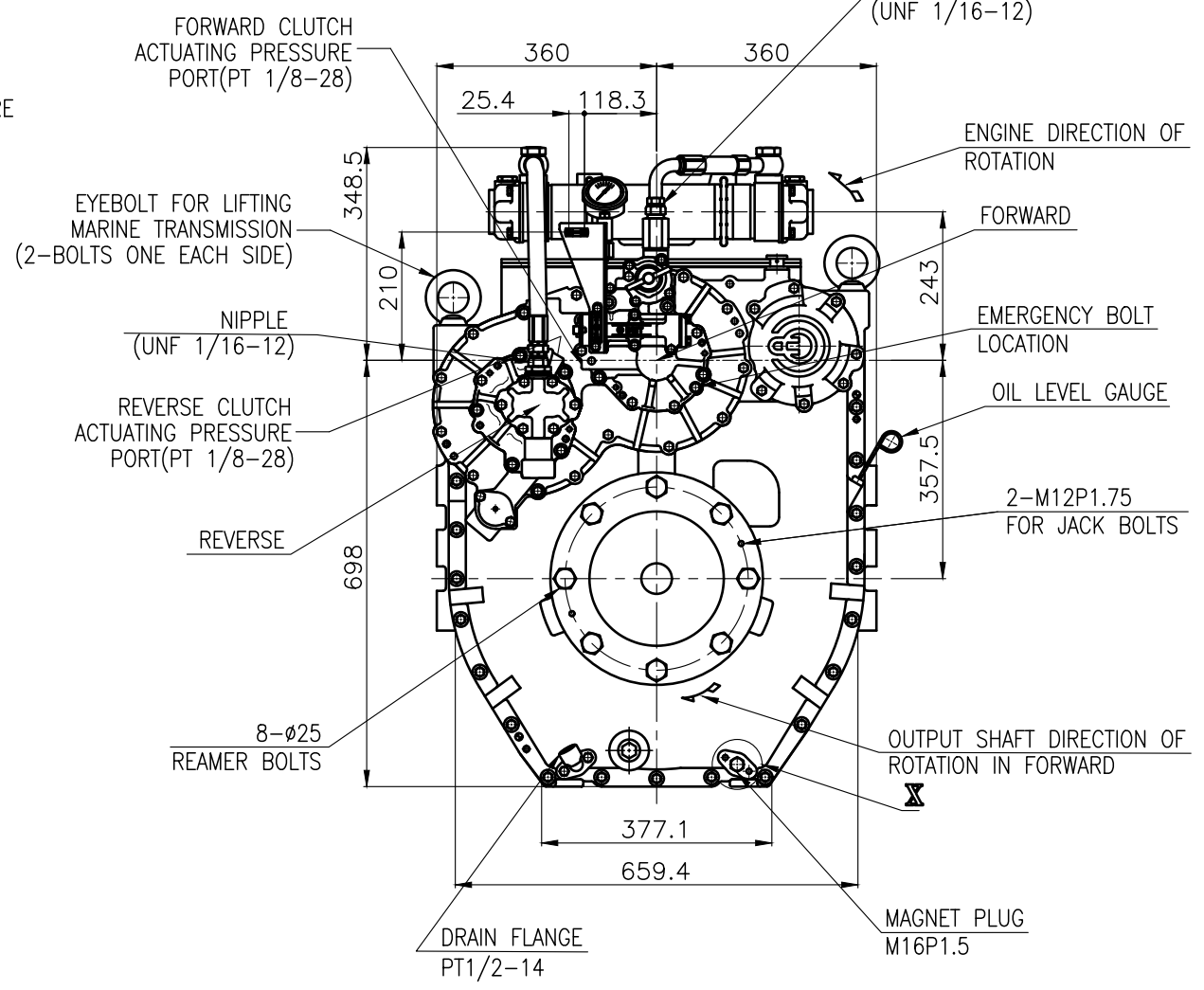
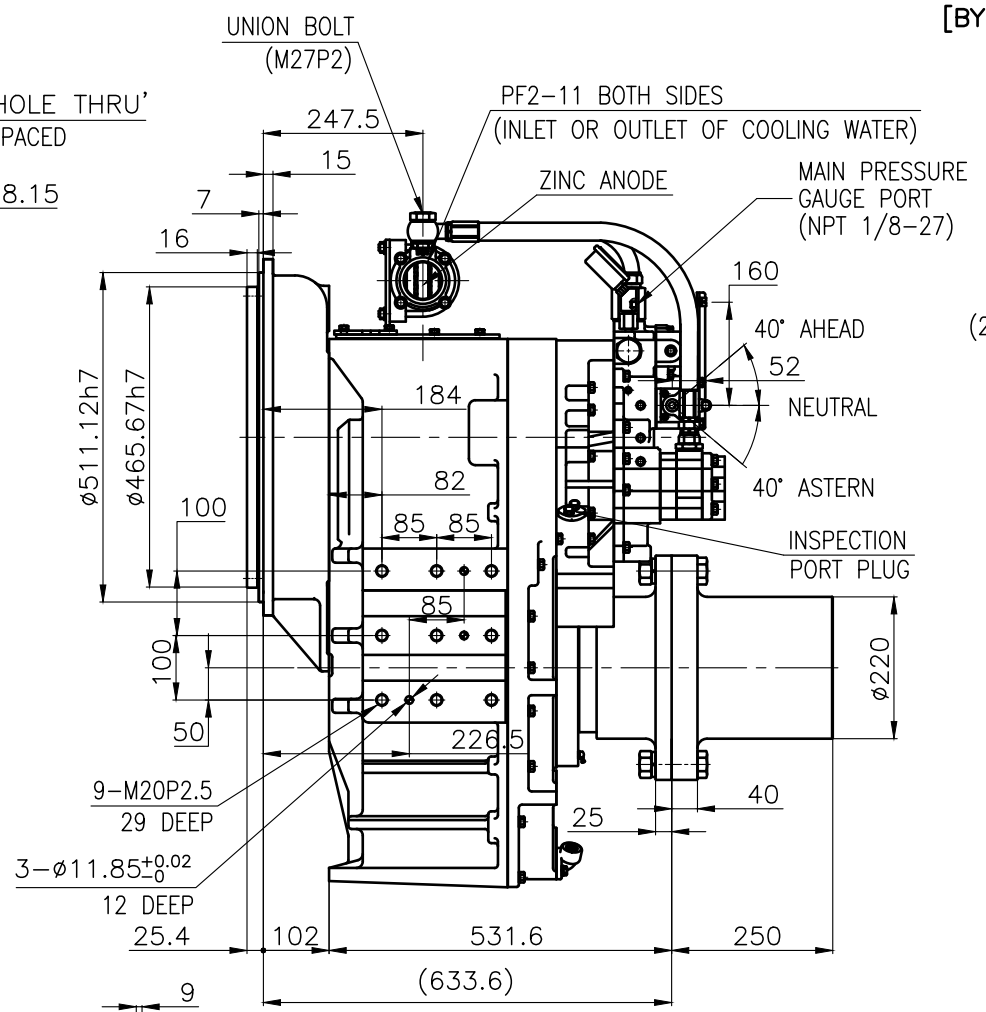
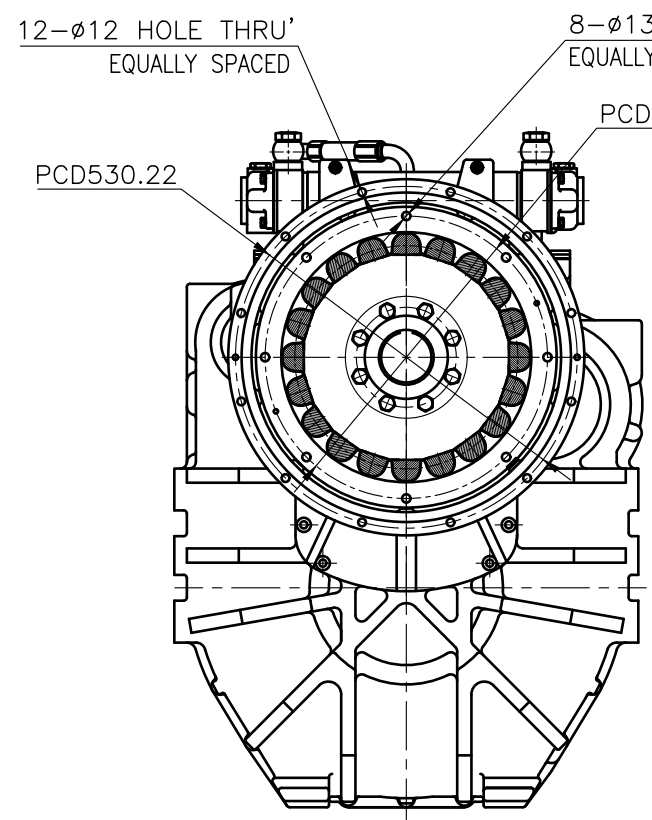
OUTPUT SHAFT COUPLING & PROPELLER COUPLING DIMENSION



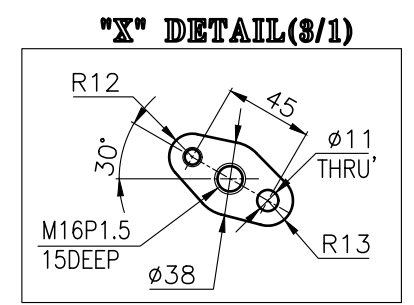
INPUT COUPLING DIMENSION



DMT460HL MARINE TRANSMISSION SPECIFICATION	
GEAR RATIO	3.02, 3.28, 3.56, 4.07, 4.48, 4.95
TOTAL WEIGHT	APPROX. 955 Kg(DRY)
OIL CAPACITY	APPROX. 18L
OIL VISCOSITY	SAE # 30
OIL PRESSURE	1.96 ~ 2.54 MPa CLUTCH OIL
DIRECTION OF ROTATION IN FORWARD	INPUT C.C.W VIEWED FROM THE STERN OUTPUT C.W VIEWED FROM THE STERN
OIL CHANGE INTERVAL	THE FIRST 100HOURS OF INITIAL OPERATION AND EVERY 1000HOURS THEREAFTER
SHIFTING LIMIT	UNDER 50% OF THE RATED ENGINE SPEED
OIL COOLER	WATER FLOW 90 ~ 120 L/min TEMPERATURE OF COOLING WATER MAX 32°C
OPERATING TORQUE OF SHIFTING LEVER	UNDER 2.94Nm

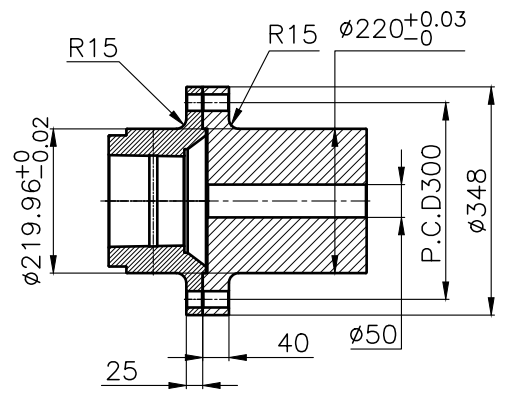


BRACKET DIMENSION

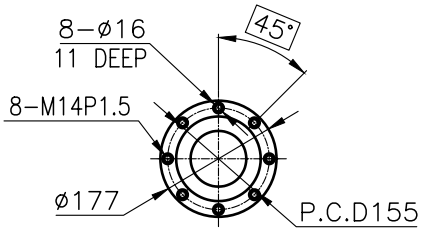


- REMARK
- HOUSING : SAE# 1
 - DRIVING RING : SAE 14"
 - COUPLING TYPE : RUBBER

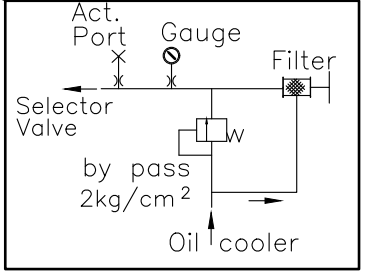
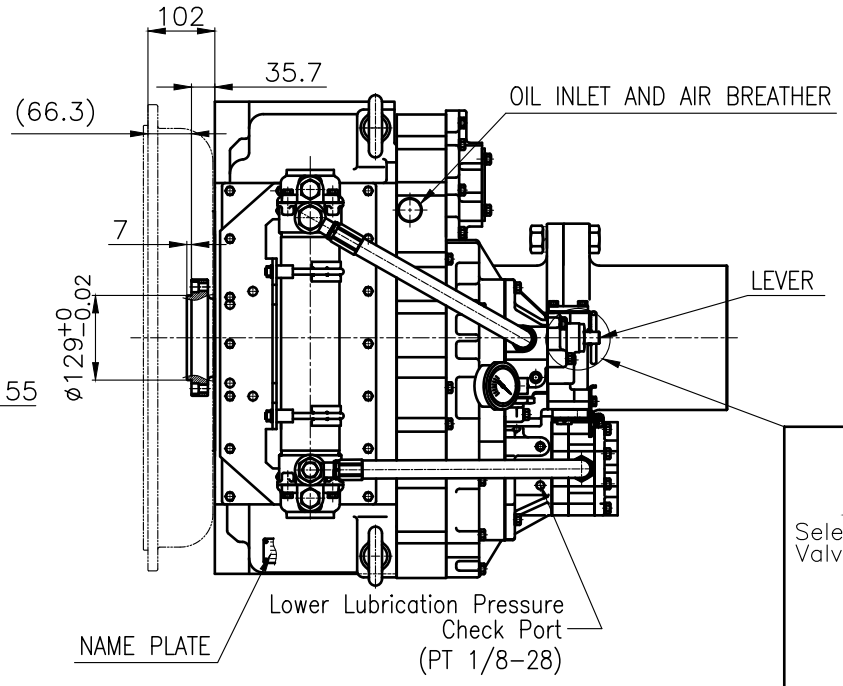
공통공차 TOLERANCE ON		PART NO.		PART NAME		계수 QTY		재료 MATERIAL		규격 SIZE		비고 REMARKS	
분수 FRACTIONS	소수 DECIMALS	각도 ANGLES	번 NO.	명 명	형 식 TYPE	수량 QTY	재질 MATERIAL	규격 SIZE	비고 REMARKS	원도 번호 ORIGINAL DWG. NO.	기타 기타	기타 기타	기타 기타
± 0.1	± 0.05	± 0.1	46000GHA~F-114RC	DMT460HL	TYPE	1	DMT460HL	DMT460HL	ORIGINAL DWG. NO.				
± 0.2	± 0.07	± 0.2		MARINE TRANSMISSION	NAME		MARINE TRANSMISSION	MARINE TRANSMISSION					
± 0.3	± 0.1	± 0.3		APPROVED BY	DESIGNED		APPROVED BY	DESIGNED					
± 0.5	± 0.2	± 0.5		JK.Kim	MA.Kim		JK.Kim	MA.Kim					
± 0.7	± 0.3	± 0.7		CHECKED BY	TH.Cha		CHECKED BY	TH.Cha					
± 1.2	± 0.5	± 1.2		DATE	2018.06.29		DATE	2018.06.29					
± 1.6	± 0.7	± 1.6		SCALE	N/S		SCALE	N/S					
± 2.0	± 0.8	± 2.0		DRAWN			DRAWN						
				DESIGNED			DESIGNED						
				D-I INDUSTRIAL			D-I INDUSTRIAL						
				SIZE	A 3		SIZE	A 3					
				코드 번호 CODE ID. NO.			코드 번호 CODE ID. NO.						



OUTPUT SHAFT COUPLING & PROPELLER COUPLING DIMENSION

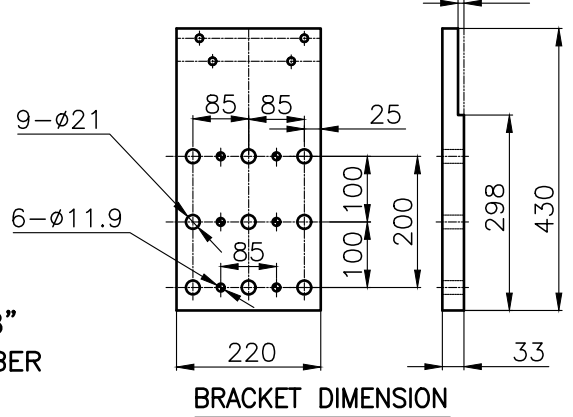
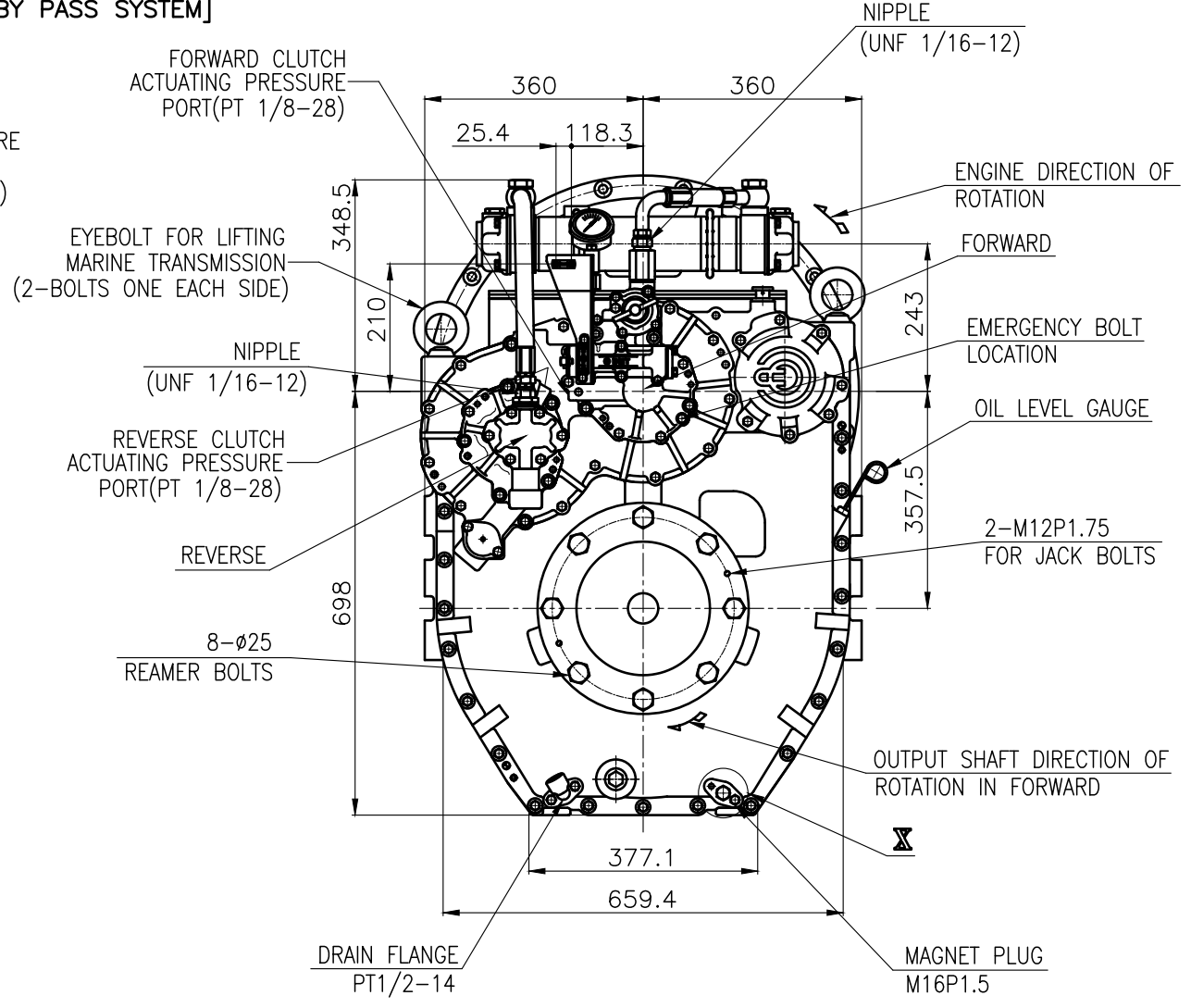
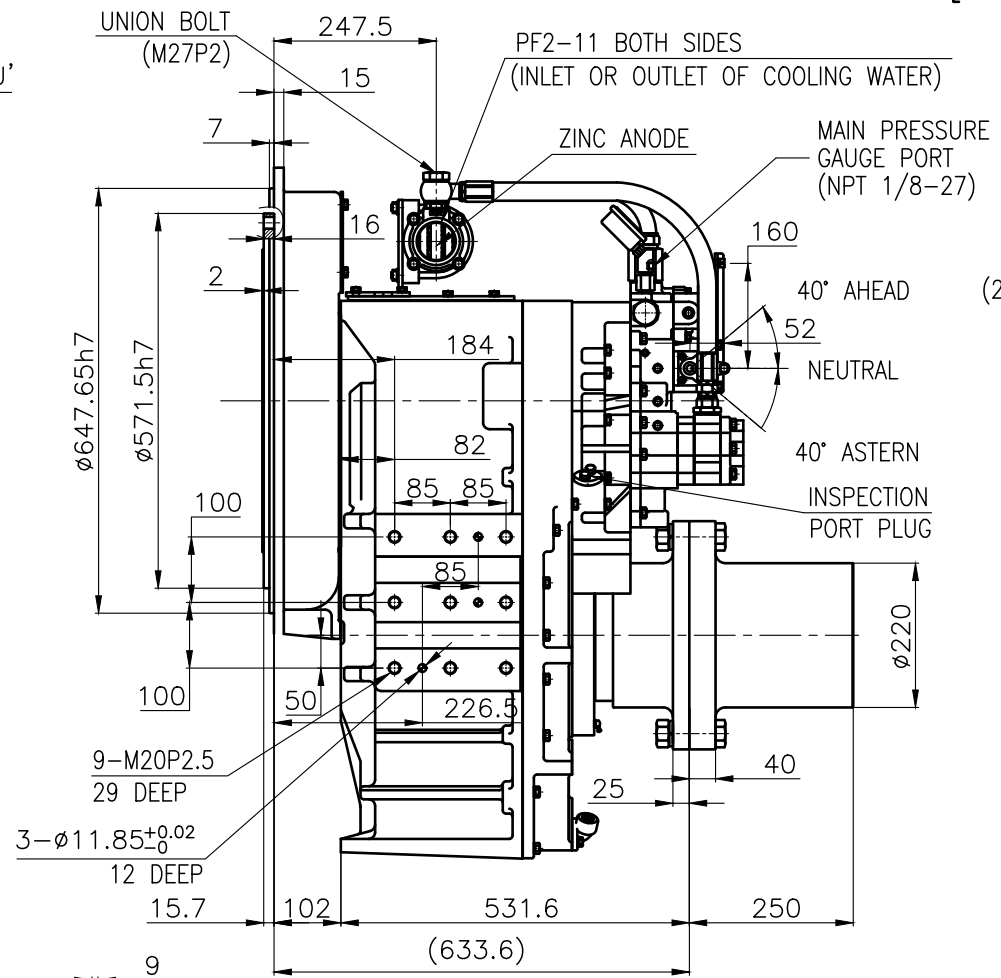
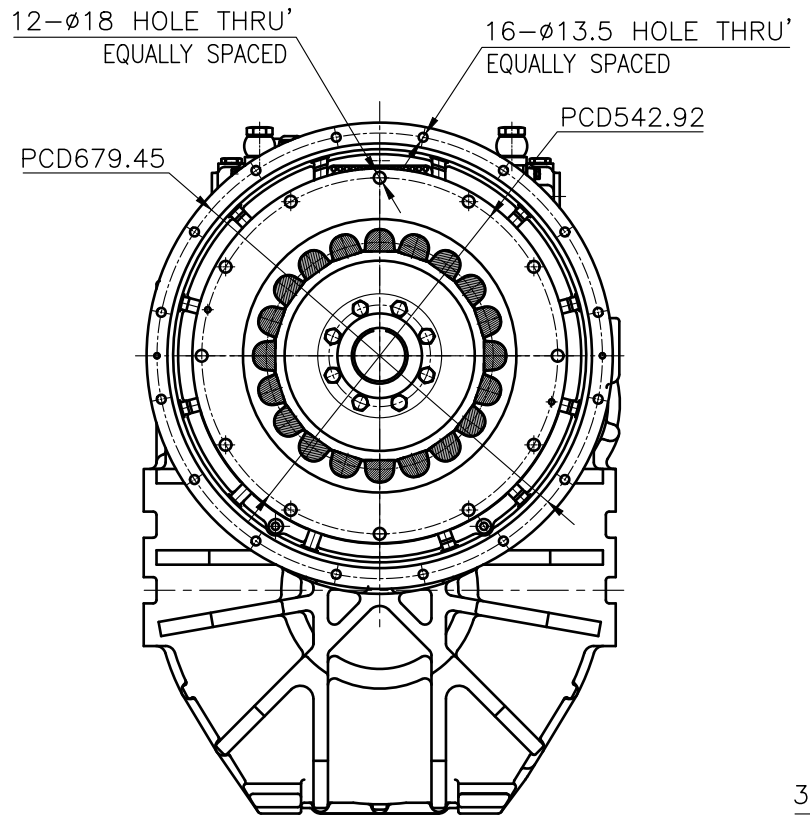


INPUT COUPLING DIMENSION

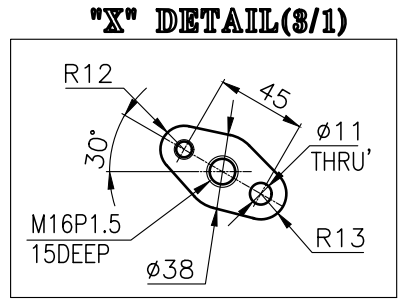


[BY PASS SYSTEM]

DMT460HL MARINE TRSANMISSION SPECIFICATION		
GEAR RATIO	3.02, 3.28, 3.56, 4.07, 4.48, 4.95	
TOTAL WEIGHT	APPROX. 979 Kg(DRY)	
OIL CAPACITY	APPROX. 18L	
OIL VISCOSITY	SAE # 30	
OIL PRESSURE	1.96 ~ 2.54 MPa	CLUTCH OIL
DIRECTION OF ROTATION	INPUT	C.C.W VIEWED FROM THE STERN
	OUTPUT	C.W VIEWED FROM THE STERN
OIL CHANGE INTERVAL	THE FIRST 100HOURS OF INITIAL OPERATION AND EVERY 1000HOURS THEREAFTER	
SHIFTING LIMIT	UNDER 50% OF THE RATED ENGINE SPEED	
OIL COOLER	WATER FLOW 90 ~ 120 L/min	
	TEMPERATURE OF COOLING WATER MAX 32°C	
OPERATING TORQUE OF SHIFTING LEVER	UNDER 2.94Nm	



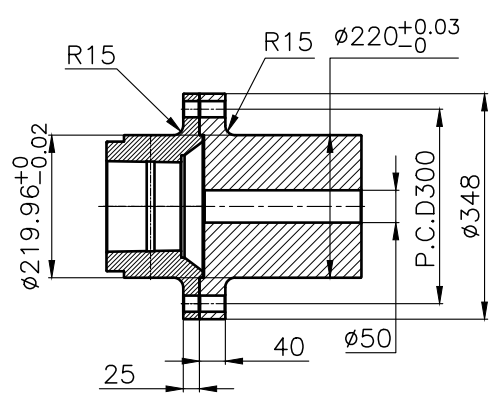
BRACKET DIMENSION



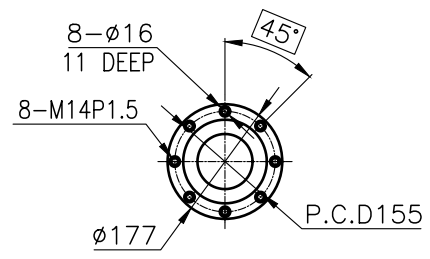
- REMARK
- 1.HOUSING : SAE# 0
 - 2.DRIVING RING : SAE 18"
 - 3.COUPLING TYPE : RUBBER

TOLERANCE ON				PART NO.		PART NAME		QTY		MATERIAL		SIZE		REMARKS																					
FRACTIONS	DECIMALS	ANGLES	±	NO.	REV.	NAME	QTY	QTY	MATERIAL	SIZE	REMARKS	TYPE	ORIGINAL DWG. NO.																						
±	±	±	±	2018.06.29		DMT460HL						DMT460HL																							
<table border="1"> <tr> <th>구분</th> <th>조급</th> <th>중급</th> <th>정급</th> </tr> <tr> <td>1 초과 4 이하</td> <td>± 0.3</td> <td>± 0.1</td> <td>± 0.05</td> </tr> <tr> <td>4</td> <td>± 0.5</td> <td>± 0.2</td> <td>± 0.07</td> </tr> <tr> <td>16</td> <td>± 0.7</td> <td>± 0.3</td> <td>± 0.1</td> </tr> <tr> <td>63</td> <td>± 1.2</td> <td>± 0.5</td> <td>± 0.2</td> </tr> <tr> <td>250</td> <td>± 2.0</td> <td>± 0.8</td> <td>± 0.3</td> </tr> </table>				구분	조급	중급	정급	1 초과 4 이하	± 0.3	± 0.1	± 0.05	4	± 0.5	± 0.2	± 0.07	16	± 0.7	± 0.3	± 0.1	63	± 1.2	± 0.5	± 0.2	250	± 2.0	± 0.8	± 0.3	DATE 2018.06.29 SCALE N/S		NAME MARINE TRANSMISSION		DWG. NO. 46000GHA~F-018RC		REV. 000	
구분	조급	중급	정급																																
1 초과 4 이하	± 0.3	± 0.1	± 0.05																																
4	± 0.5	± 0.2	± 0.07																																
16	± 0.7	± 0.3	± 0.1																																
63	± 1.2	± 0.5	± 0.2																																
250	± 2.0	± 0.8	± 0.3																																
APPROVED BY JK.Kim CHECKED BY TH.Cha DRAWN MA.Kim DESIGNED				SIZE A 3		CODE ID. NO.																													

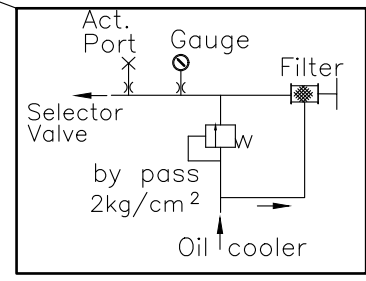
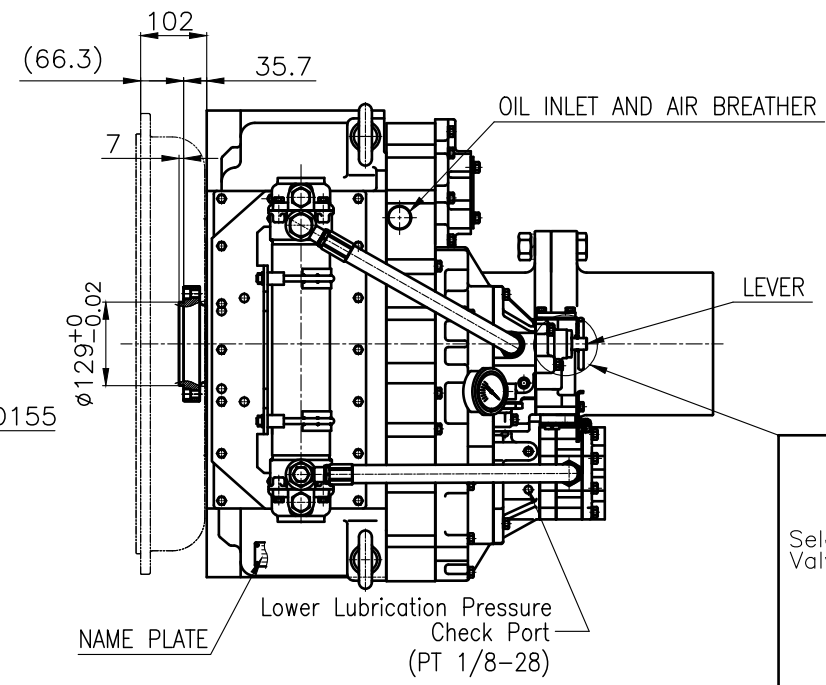
D-I INDUSTRIAL



OUTPUT SHAFT COUPLING & PROPELLER COUPLING DIMENSION

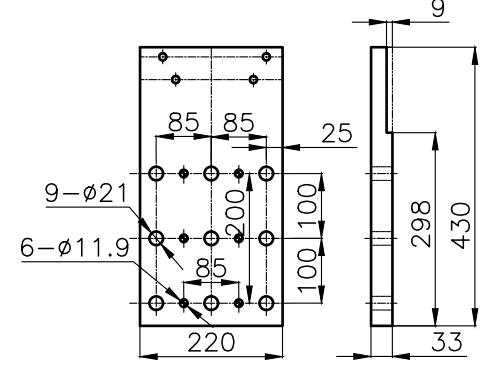
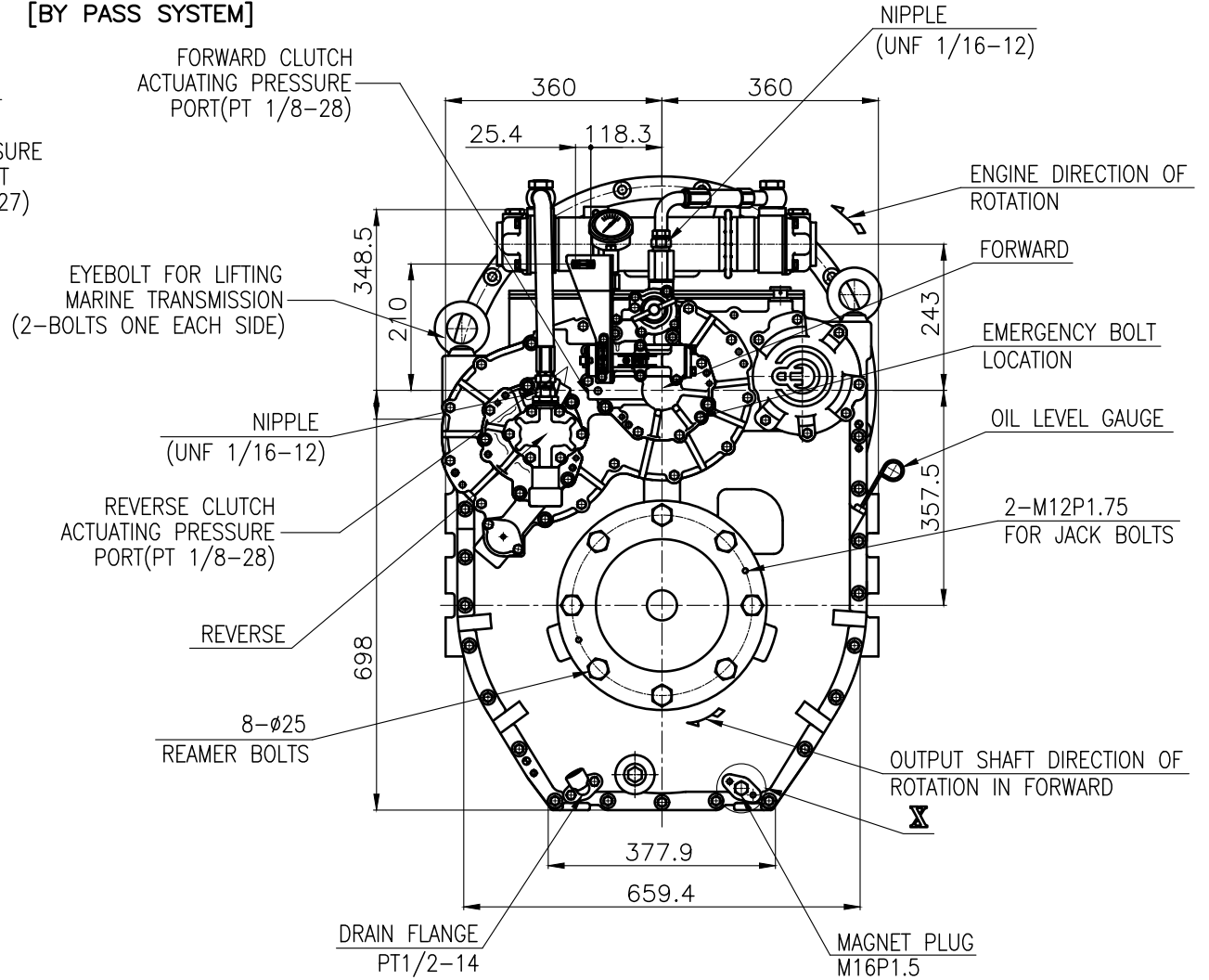
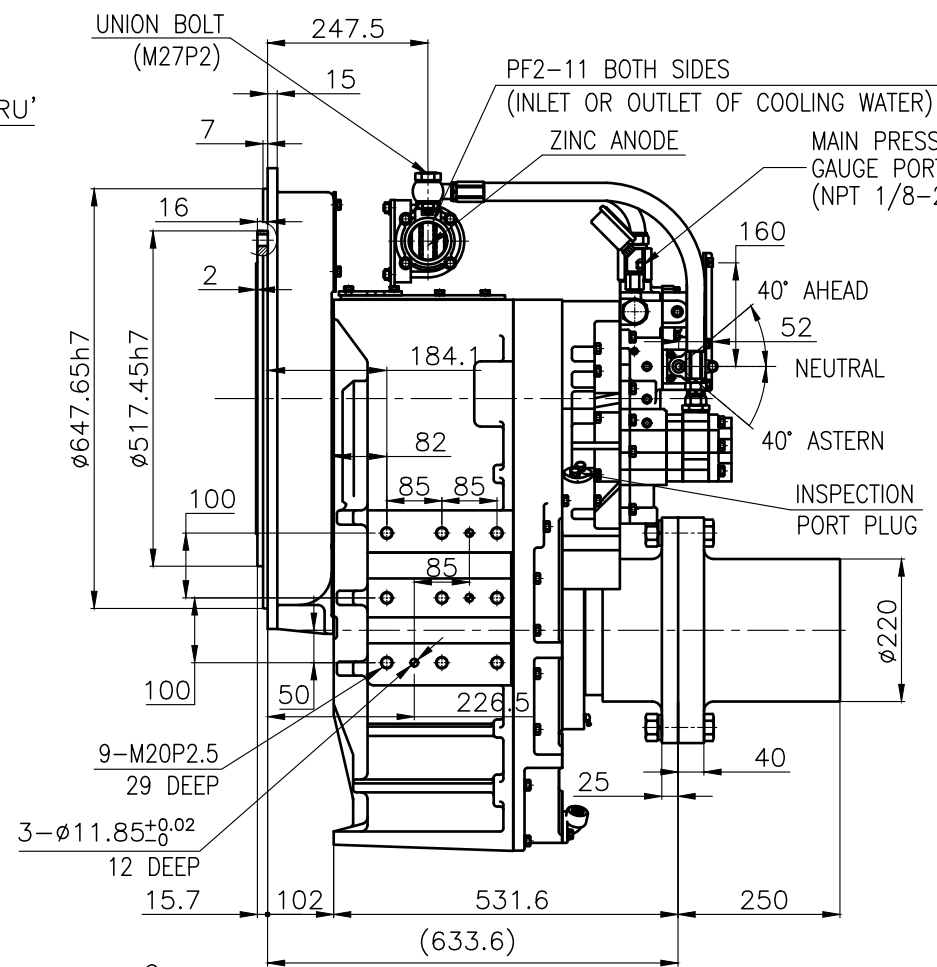
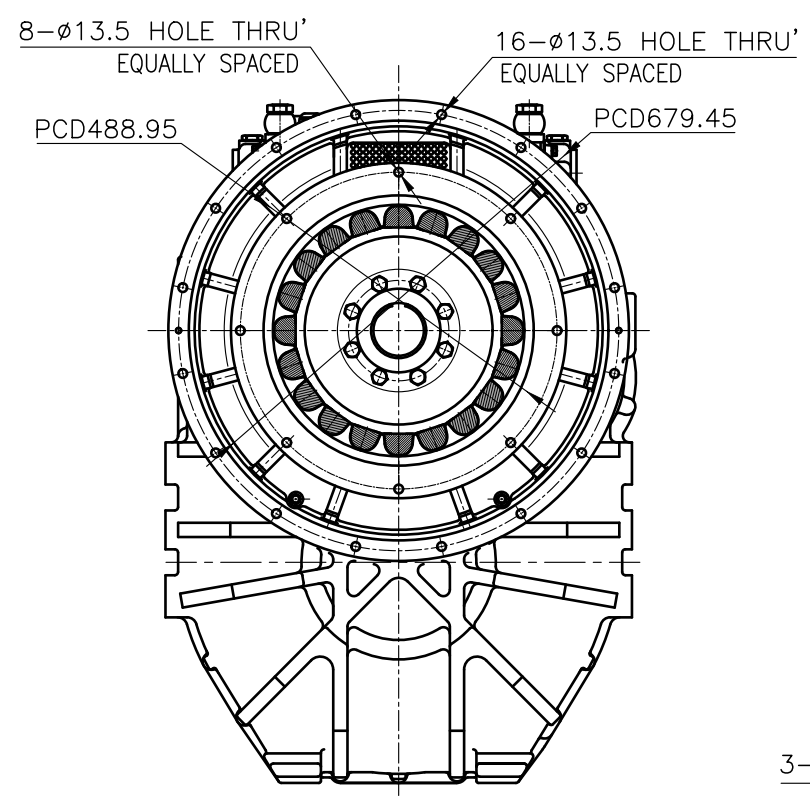


INPUT COUPLING DIMENSION

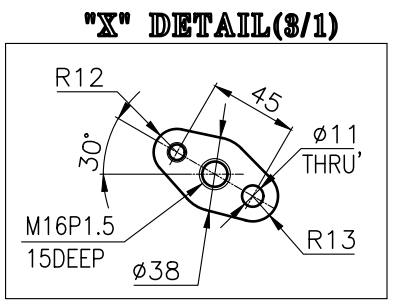


[BY PASS SYSTEM]

DMT460HL MARINE TRSANMISSION SPECIFICATION		
GEAR RATIO	3.02, 3.28, 3.56, 4.07, 4.48, 4.95	
TOTAL WEIGHT	APPROX. 978 Kg(DRY)	
OIL CAPACITY	APPROX. 18L	
OIL VISCOSITY	SAE # 30	
OIL PRESSURE	1.96 ~ 2.54 MPa	CLUTCH OIL
DIRECTION OF ROTATION	INPUT	C.C.W VIEWED FROM THE STERN
	OUTPUT	C.W VIEWED FROM THE STERN
OIL CHANGE INTERVAL	THE FIRST 100HOURS OF INITIAL OPERATION AND EVERY 1000HOURS THEREAFTER	
SHIFTING LIMIT	UNDER 50% OF THE RATED ENGINE SPEED	
OIL COOLER	WATER FLOW	90 ~ 120 L/min
	TEMPERATURE OF COOLING WATER	MAX 32°C
OPERATING TORQUE OF SHIFTING LEVER	UNDER 2.94Nm	

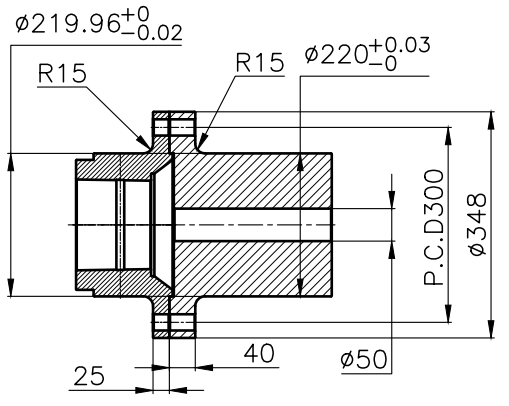


BRACKET DIMENSION

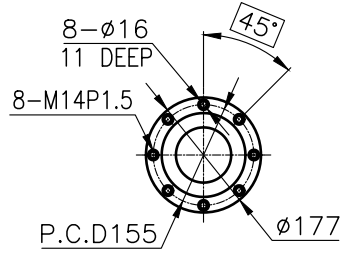


REMARK
 1.HOUSING : SAE# 0
 2.DRIVING RING : SAE 16"
 3.COUPLING TYPE : RUBBER

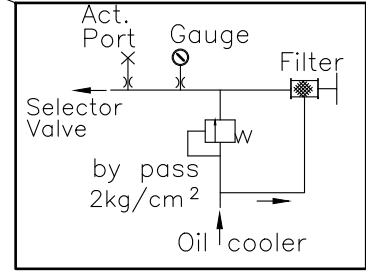
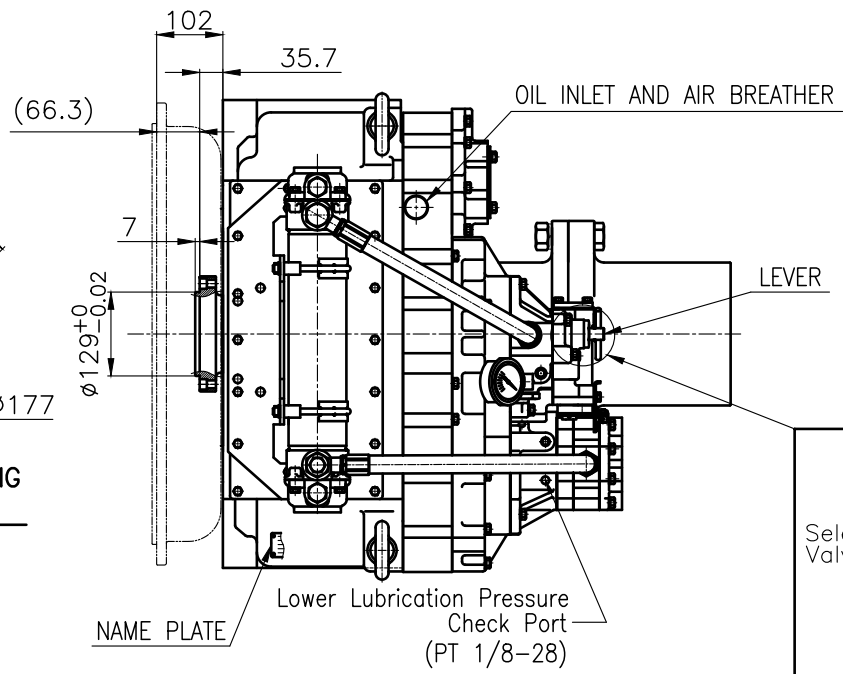
TOLERANCE ON				PART NO.		PART NAME		Q'TY		MATERIAL		SIZE		REMARKS	
FRACTIONS	DECIMALS	ANGLES		NO.	REV.										
±	±	±													
1. 1/2 이상 ±0.3 ±0.1 ±0.05 2. 1/4 이상 ±0.5 ±0.2 ±0.07 3. 1/8 이상 ±0.7 ±0.3 ±0.1 4. 1/16 이상 ±1.2 ±0.5 ±0.2 5. 1/32 이상 ±2.0 ±0.8 ±0.3				46000GHAF-016RC		MARINE TRANSMISSION		1		SAE 0		360		000	
2018.06.29				2018.06.29		N/S		MA.Kim		TH.Cha		JK.Kim		46000GHAF-016RC	
D-I INDUSTRIAL				A 3		CODE ID. NO.		000		000		000		000	



OUTPUT SHAFT COUPLING & PROPELLER COUPLING DIMENSION

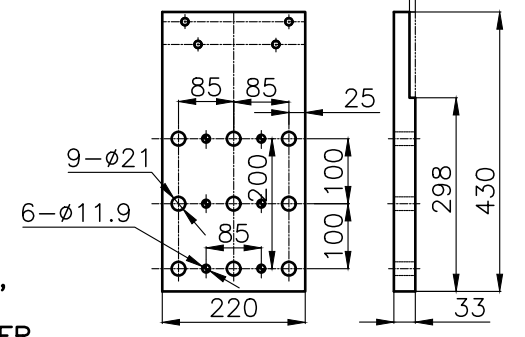
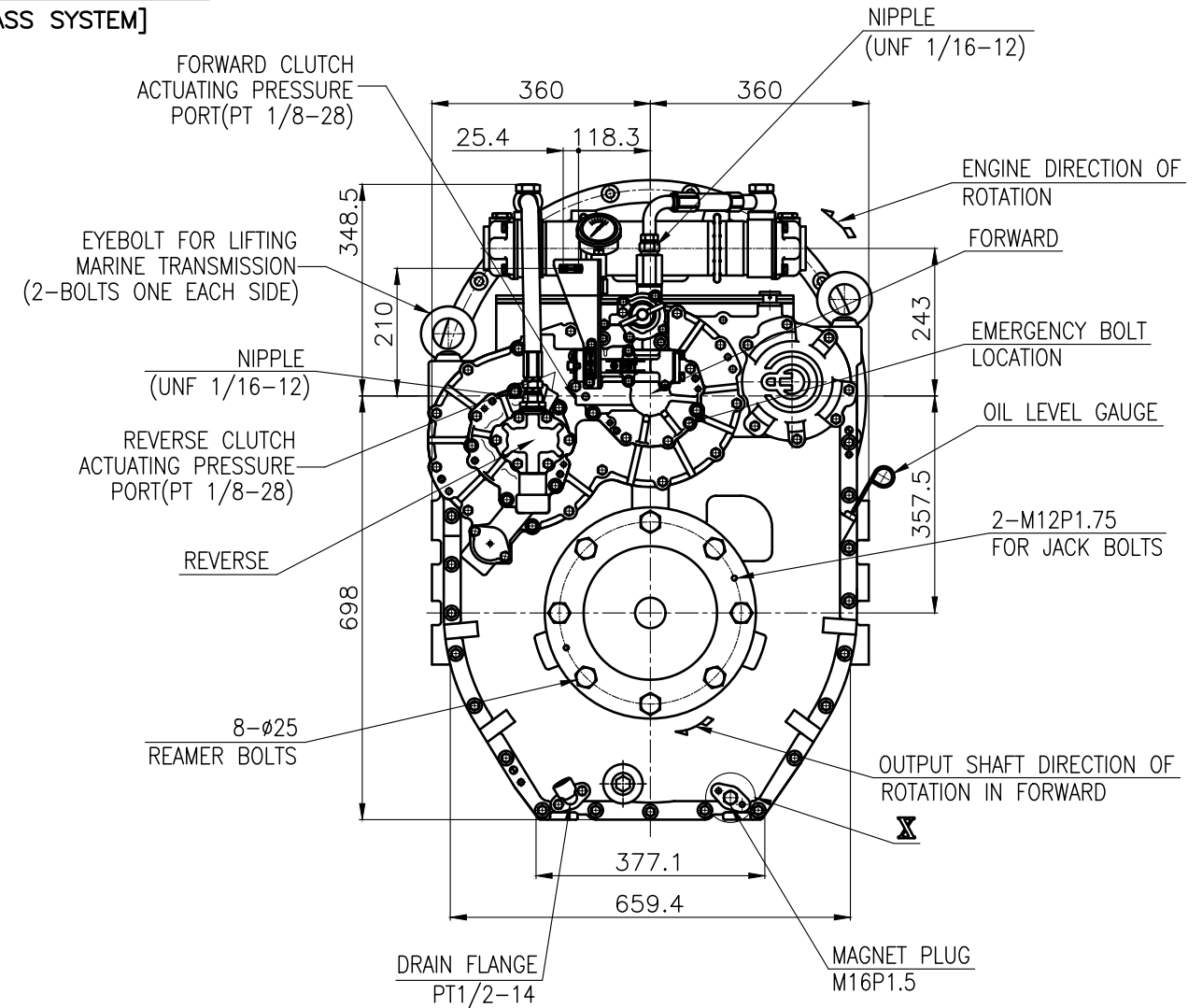
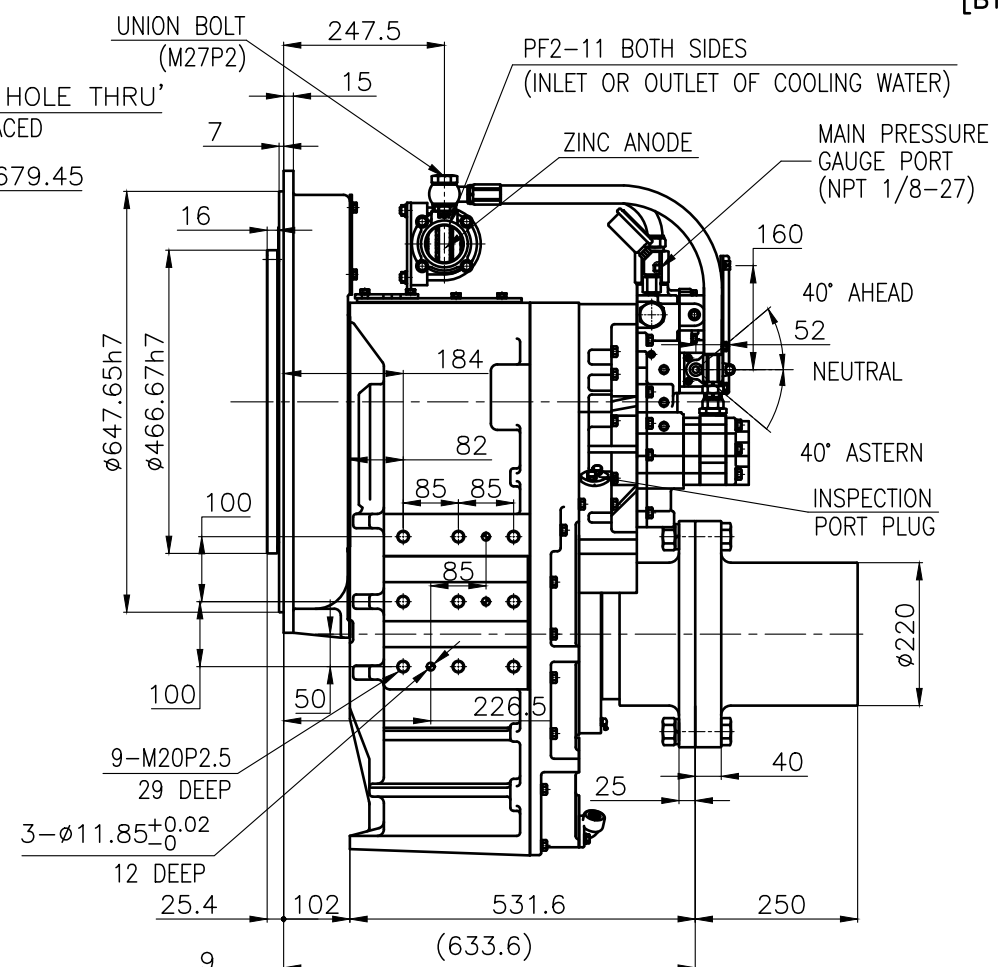
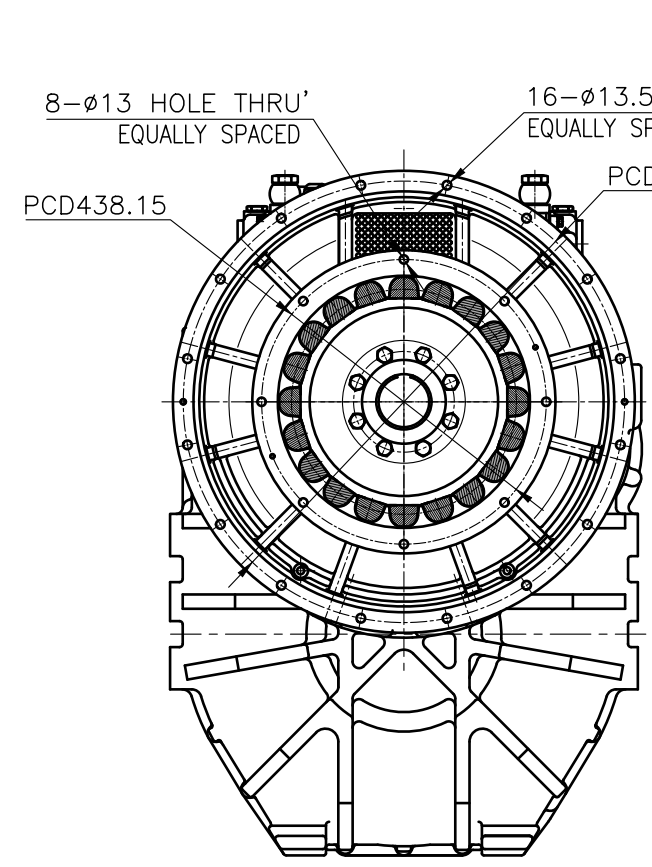


INPUT COUPLING DIMENSION

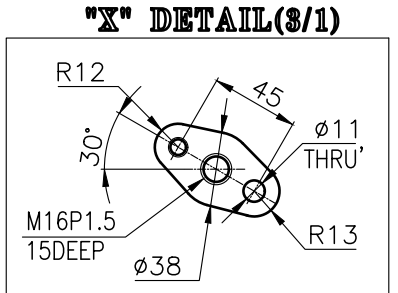


[BY PASS SYSTEM]

DMT460HL MARINE TRANSMISSION SPECIFICATION	
GEAR RATIO	3.02, 3.28, 3.56, 4.07, 4.48, 4.95
TOTAL WEIGHT	APPROX. 968 Kg(DRY)
OIL CAPACITY	APPROX. 18 L
OIL VISCOSITY	SAE # 30
OIL PRESSURE	1.96 ~ 2.54 MPa CLUTCH OIL
DIRECTION OF ROTATION IN FORWARD	INPUT C.C.W VIEWED FROM THE STERN OUTPUT C.W VIEWED FROM THE STERN
OIL CHANGE INTERVAL	THE FIRST 100HOURS OF INITIAL OPERATION AND EVERY 1000HOURS THEREAFTER
SHIFTING LIMIT	UNDER 50% OF THE RATED ENGINE SPEED
OIL COOLER	WATER FLOW 90 ~ 120 L/min TEMPERATURE OF COOLING WATER MAX 32°C
OPERATING TORQUE OF SHIFTING LEVER	UNDER 2.94Nm



BRACKET DIMENSION



REMARK
 1.HOUSING : SAE# 0
 2.DRIVING RING : SAE 14"
 3.COUPLING TYPE : RUBBER

TOLERANCE ON		PART NO.		PART NAME		QTY		MATERIAL		SIZE		REMARKS	
FRACTIONS	DECIMALS	각도											
±	±	±											
TOLERANCE ON		DATE		SCALE		TYPE		NAME		NO.		REV.	
FRACTIONS DECIMALS ANGLES		2018.06.29		N/S		DMT460HL		MARINE TRANSMISSION		46000GHA~F-014RC		000	
APPROVED BY		CHECKED BY		DRAWN		DESIGNED		DWG. NO.		CODE ID. NO.			
JK.Kim		TH.Cha		MA.Kim				A 3		D-I INDUSTRIAL			