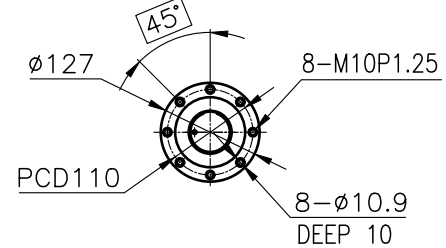
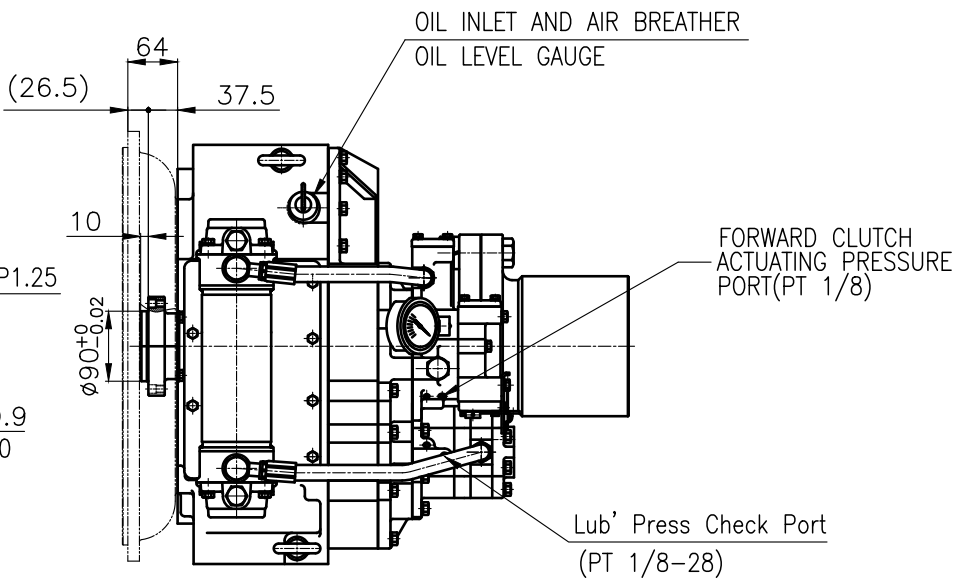


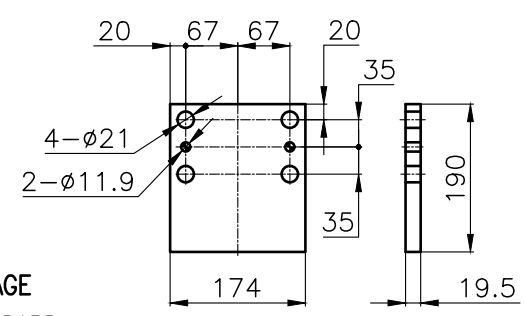
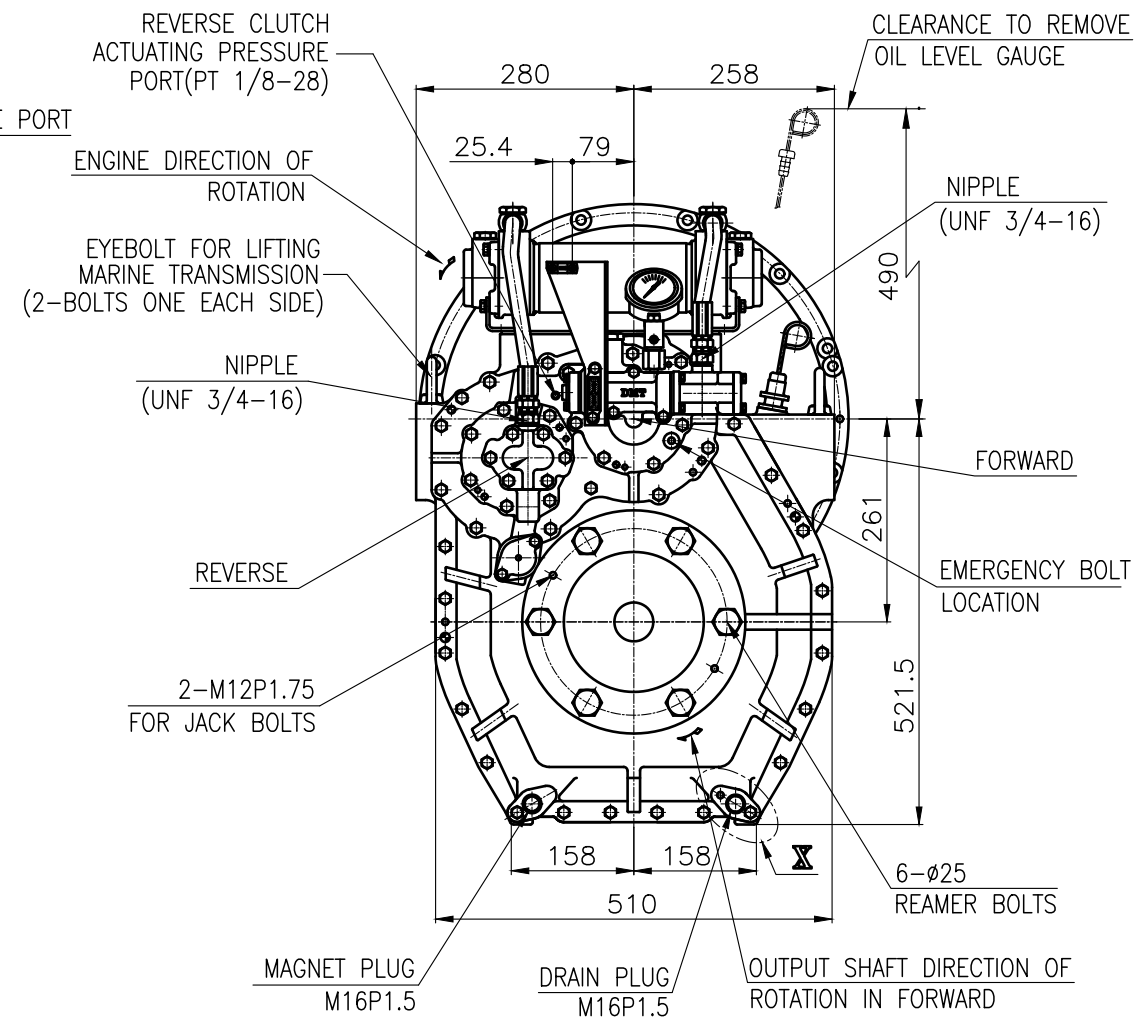
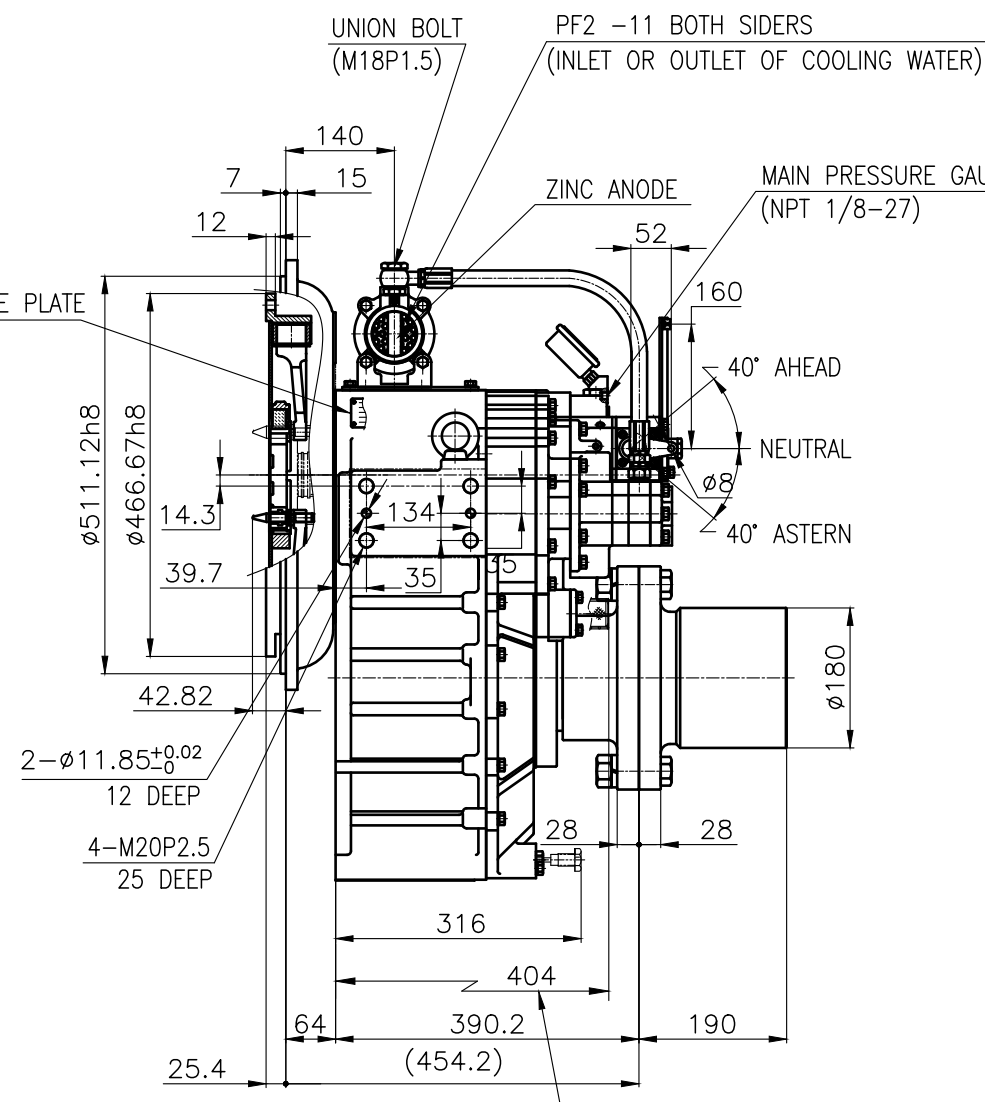
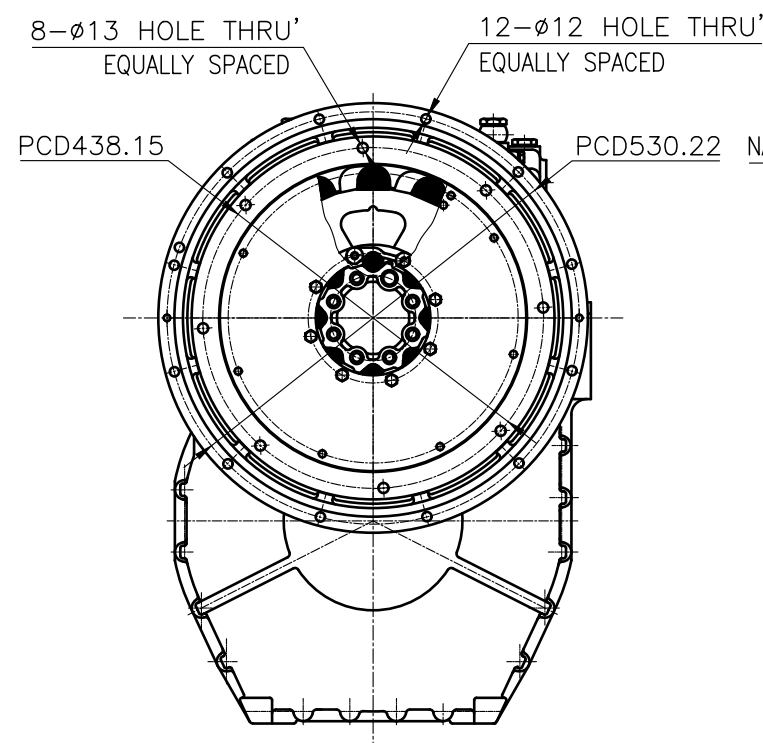
OUTPUT SHAFT COUPLING & PROPELLER COUPLING DIMENSION



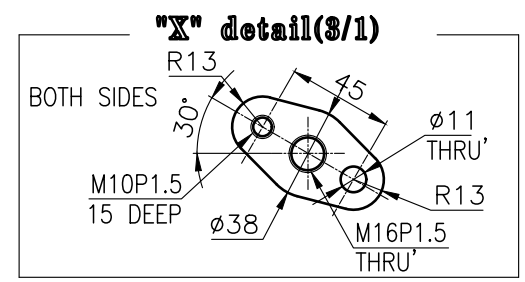
INPUT COUPLING DIMENSION



DMT 170HL MARINE TRANSMISSION SPECIFICATION			
GEAR RATIO	4.04, 4.48		
TOTAL WEIGHT	APPROX. 352.5 kg(DRY)		
OIL CAPACITY	APPROX. 10 L		
OIL VISCOSITY	SAE # 30		
OIL PRESSURE	1.96 ~ 2.54 MPa	CLUTCH OIL	
DIRECTION OF ROTATION IN FORWARD	INPUT	C.C.W VIEWED FROM THE STERN	
	OUTPUT	C.W VIEWED FROM THE STERN	
OIL CHANGE INTERVAL	THE FIRST 100HOURS OF INITIAL OPERATION AND EVERY 1000HOURS THEREAFTER		
SHIFTING LIMIT	UNDER 50% OF THE RATED ENGINE SPEED		
OIL COOLER	WATER FLOW 40 ~ 60L/min		TEMPERATURE OF COOLING WATER MAX 32°C
	OPERATING TORQUE OF SHIFTING LEVER		

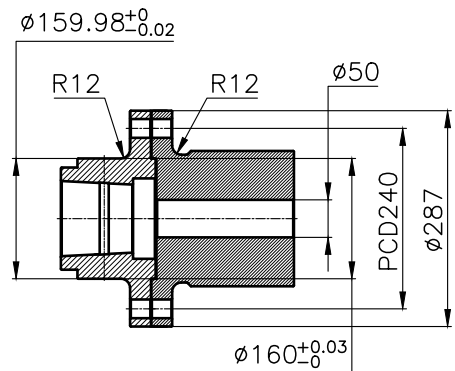


BRACKET DIMENSION

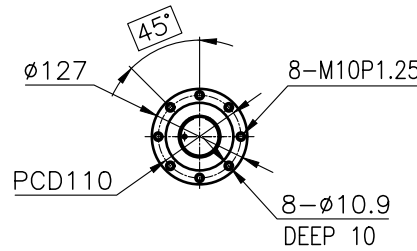


- REMARK (HOT)
 1.HOUSING: SAE#1
 2.DRIVING RING: SAE 14"
 3.COUPLING TYPE : DUAL STAGE
 4.APPLICATION ENGINE : STANDARD

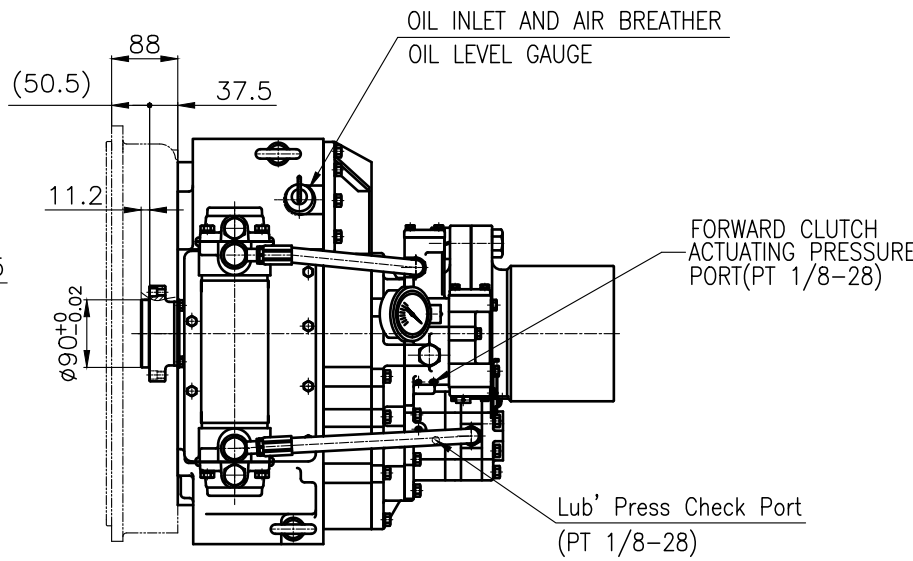
TOLERANCE ON				PART NO.		PART NAME		QTY		MATERIAL		SIZE		REMARKS																							
FRACTIONS	DECIMALS	ANGLES		NO.		NAME		TYPE		MATERIAL		SIZE		REMARKS																							
±	±	±		JK.Kim		TH.Cha		MA.Kim		DMT170HL		MARINE TRANSMISSION		ORIGINAL DWG. NO.																							
<table border="1"> <tr> <th>구분</th> <th>조급</th> <th>중급</th> <th>정급</th> </tr> <tr> <td>1 초과 4 이하</td> <td>± 0.3</td> <td>± 0.1</td> <td>± 0.05</td> </tr> <tr> <td>4</td> <td>± 0.5</td> <td>± 0.2</td> <td>± 0.07</td> </tr> <tr> <td>16</td> <td>± 0.7</td> <td>± 0.3</td> <td>± 0.1</td> </tr> <tr> <td>63</td> <td>± 1.2</td> <td>± 0.5</td> <td>± 0.2</td> </tr> <tr> <td>250</td> <td>± 2.0</td> <td>± 0.8</td> <td>± 0.3</td> </tr> </table>				구분	조급	중급	정급	1 초과 4 이하	± 0.3	± 0.1	± 0.05	4	± 0.5	± 0.2	± 0.07	16	± 0.7	± 0.3	± 0.1	63	± 1.2	± 0.5	± 0.2	250	± 2.0	± 0.8	± 0.3	DATE 2016.06.29 SCALE N/S		TYPE MARINE TRANSMISSION		NAME MARINE TRANSMISSION		DWG. NO. 17000GHB~C-114DCH		(REV.) 000	
구분	조급	중급	정급																																		
1 초과 4 이하	± 0.3	± 0.1	± 0.05																																		
4	± 0.5	± 0.2	± 0.07																																		
16	± 0.7	± 0.3	± 0.1																																		
63	± 1.2	± 0.5	± 0.2																																		
250	± 2.0	± 0.8	± 0.3																																		
D-I INDUSTRIAL										SIZE A 3		CODE ID. NO.																									



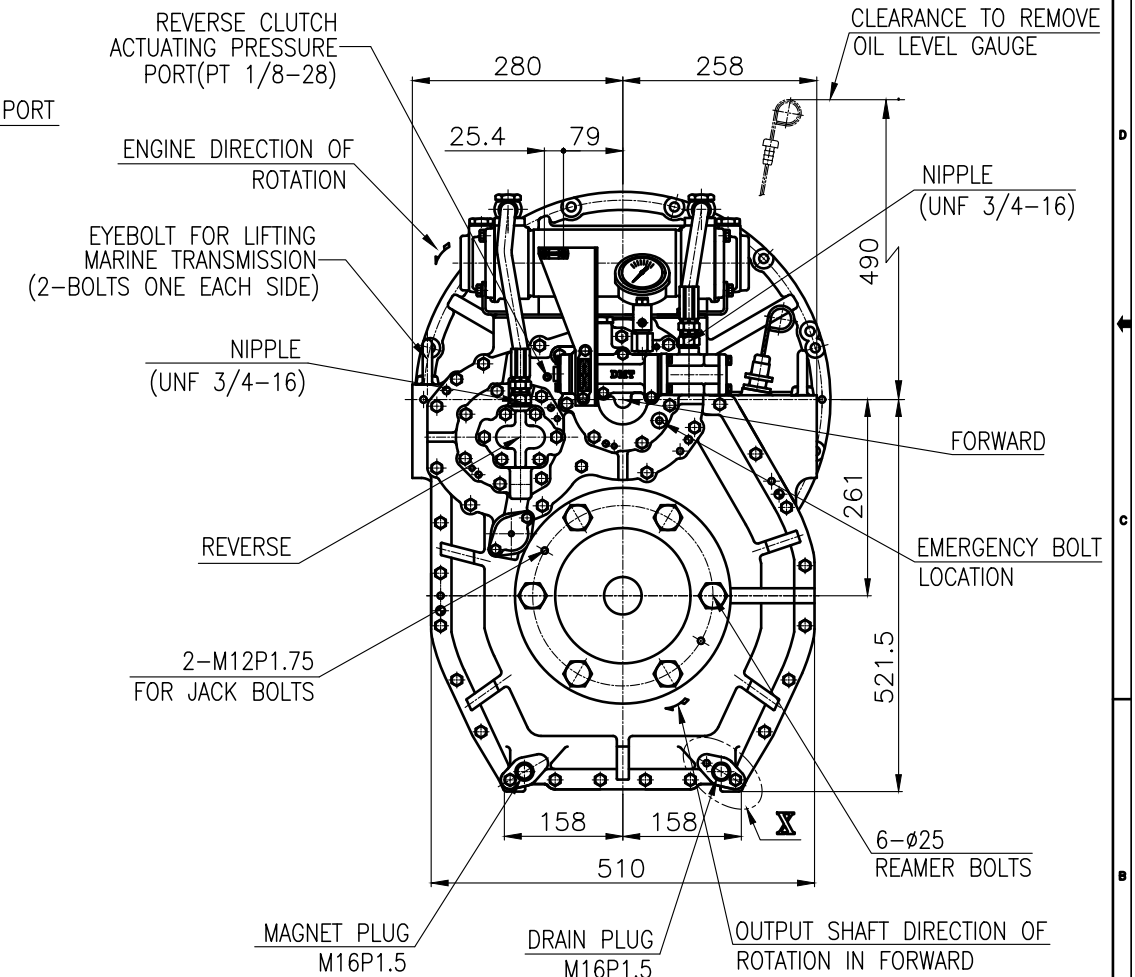
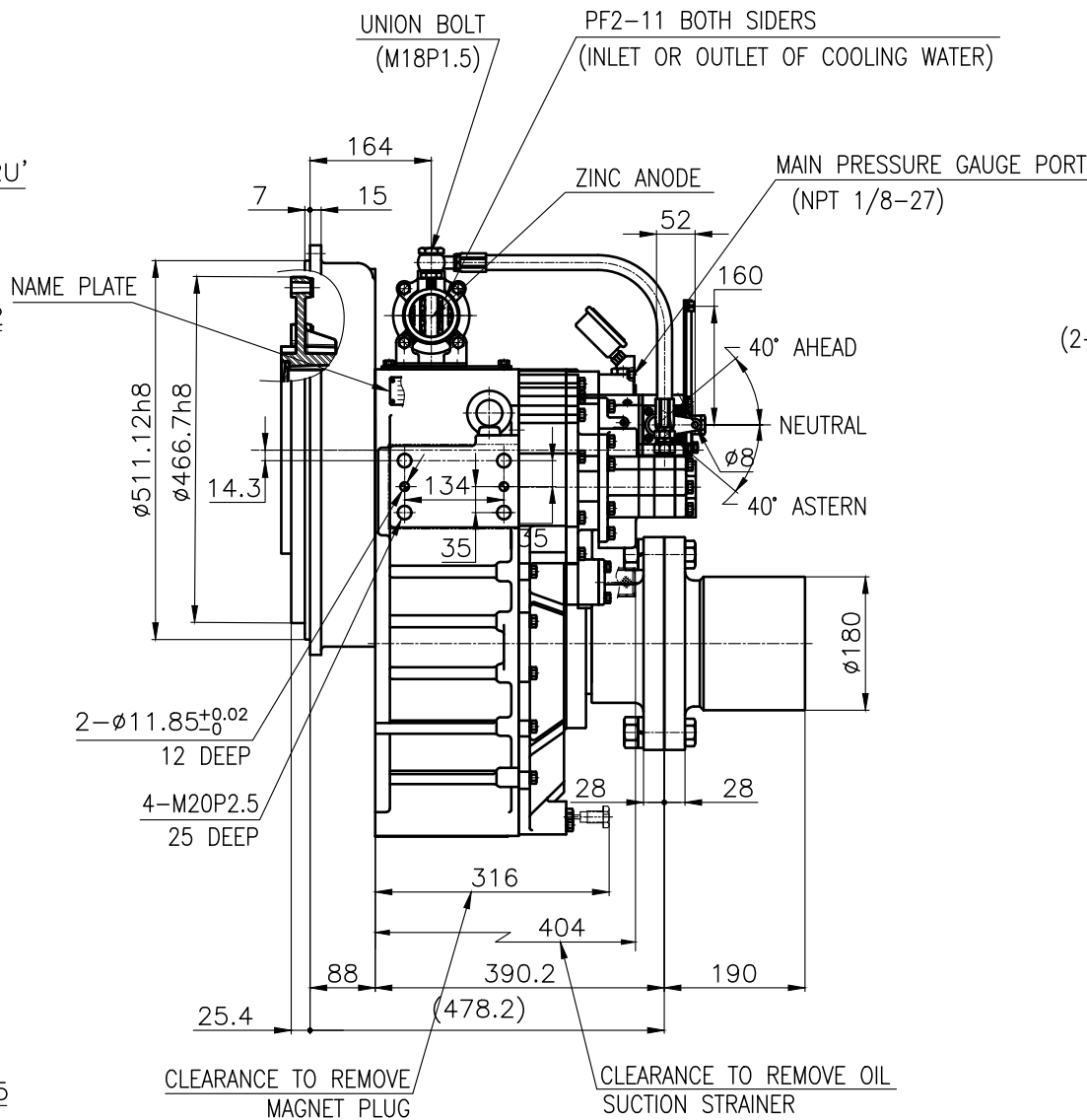
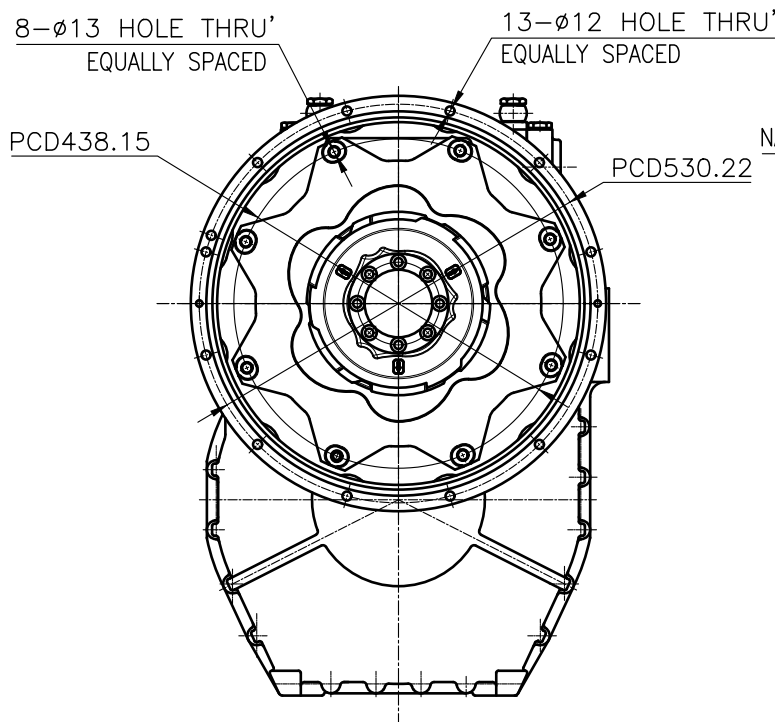
OUTPUT SHAFT COUPLING & PROPELLER COUPLING DIMENSION



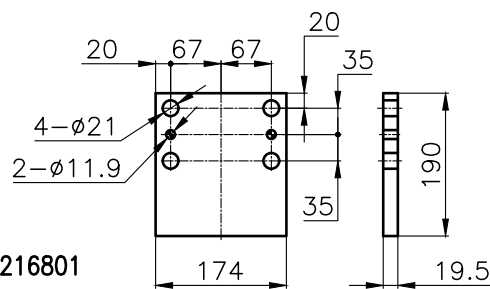
INPUT COUPLING DIMENSION



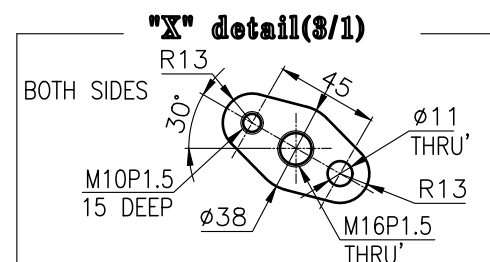
DMT 170HL MARINE TRANSMISSION SPECIFICATION	
GEAR RATIO	4.04, 4.48
TOTAL WEIGHT	APPROX. 352.5 kg(DRY)
OIL CAPACITY	APPROX. 10 L
OIL VISCOSITY	SAE # 30
OIL PRESSURE	1.96 ~ 2.54 MPa CLUTCH OIL
DIRECTION OF ROTATION	INPUT C.C.W VIEWED FROM THE STERN
IN FORWARD	OUTPUT C.W VIEWED FROM THE STERN
OIL CHANGE INTERVAL	THE FIRST 100HOURS OF INITIAL OPERATION AND EVERY 1000HOURS THEREAFTER
SHIFTING LIMIT	UNDER 50% OF THE RATED ENGINE SPEED
OIL COOLER	WATER FLOW 40 ~ 60L/min TEMPERATURE OF COOLING WATER MAX 32°C
OPERATING TORQUE OF SHIFTING LEVER	UNDER 2.94Nm



REMARK (HOT)
1.HOUSING: SAE#1
2.DRIVING RING: SAE 14"
3.COUPLING TYPE
-CENTA Flex Coupling : 77216801
4.APPLICATION ENGINE : STANDARD



BRACKET DIMENSION



TOLERANCE ON				PART NO.		PART NAME		Q'TY		MATERIAL		SIZE		REMARKS	
FRACTIONS	DECIMALS	ANGLES		NO.	REV.	NAME	QTY	REV.	MATERIAL	SIZE	REMARKS	TYPE	NO.	REV.	NO.
±0.05	±0.01	±0.05		2018.06.29		DMT170HL						DMT170HL			
±0.07	±0.02	±0.07				MARINE TRANSMISSION						MARINE TRANSMISSION			
±0.1	±0.3	±0.1				17000GHB~C-114CFRH						17000GHB~C-114CFRH			
±0.2	±0.5	±0.2													
±0.3	±1.0	±0.3													
±0.5	±2.0	±0.5													
±0.8	±5.0	±0.8													
±1.0	±10.0	±1.0													

D-I INDUSTRIAL

SIZE A 8 CODE ID. NO.