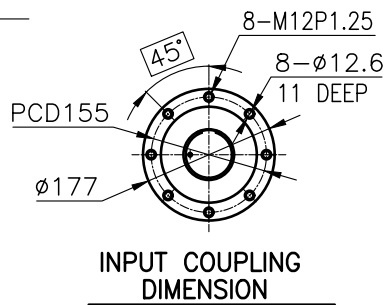
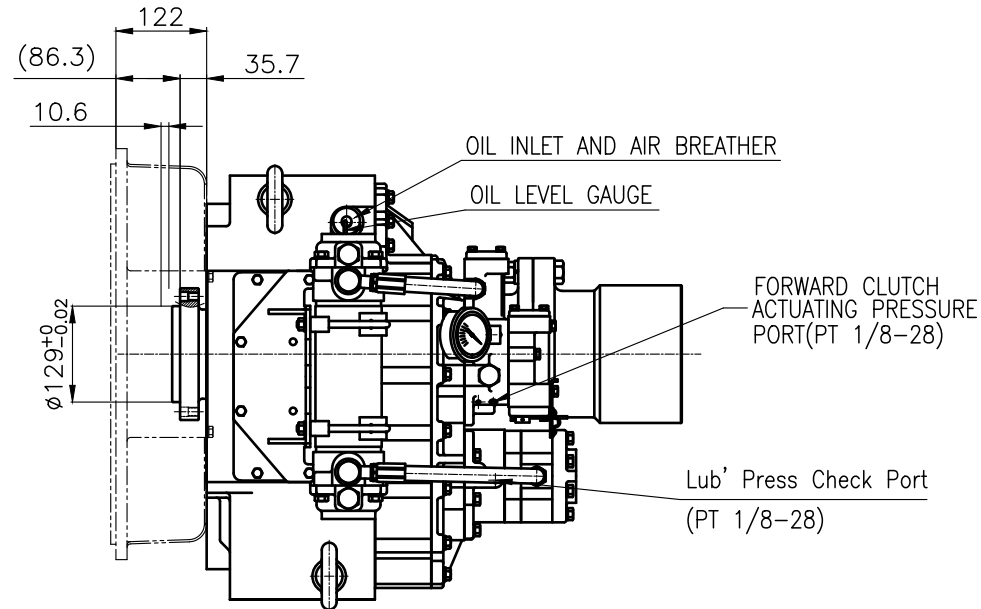


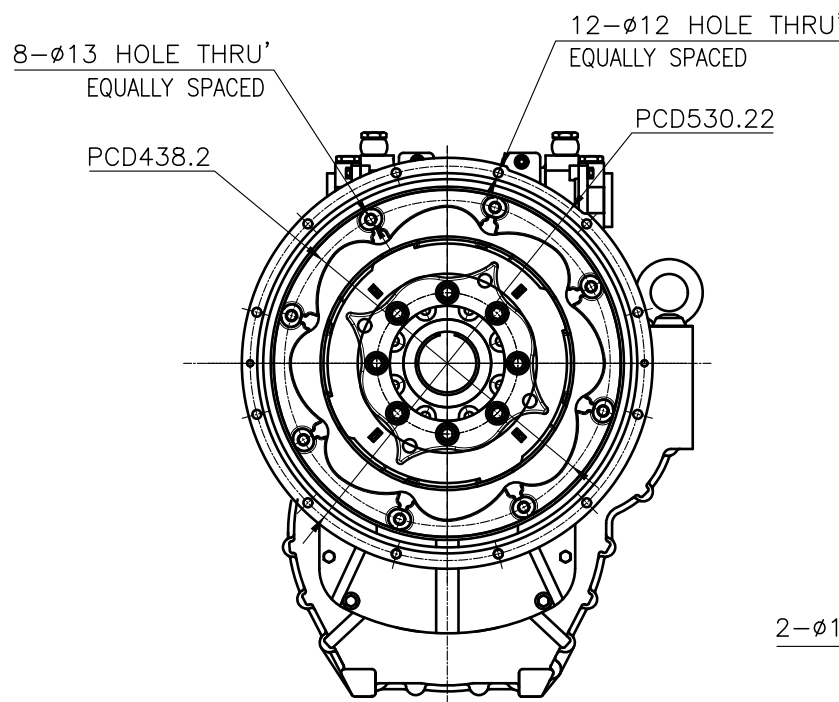
OUTPUT SHAFT COUPLING & PROPELLER COUPLING DIMENSION



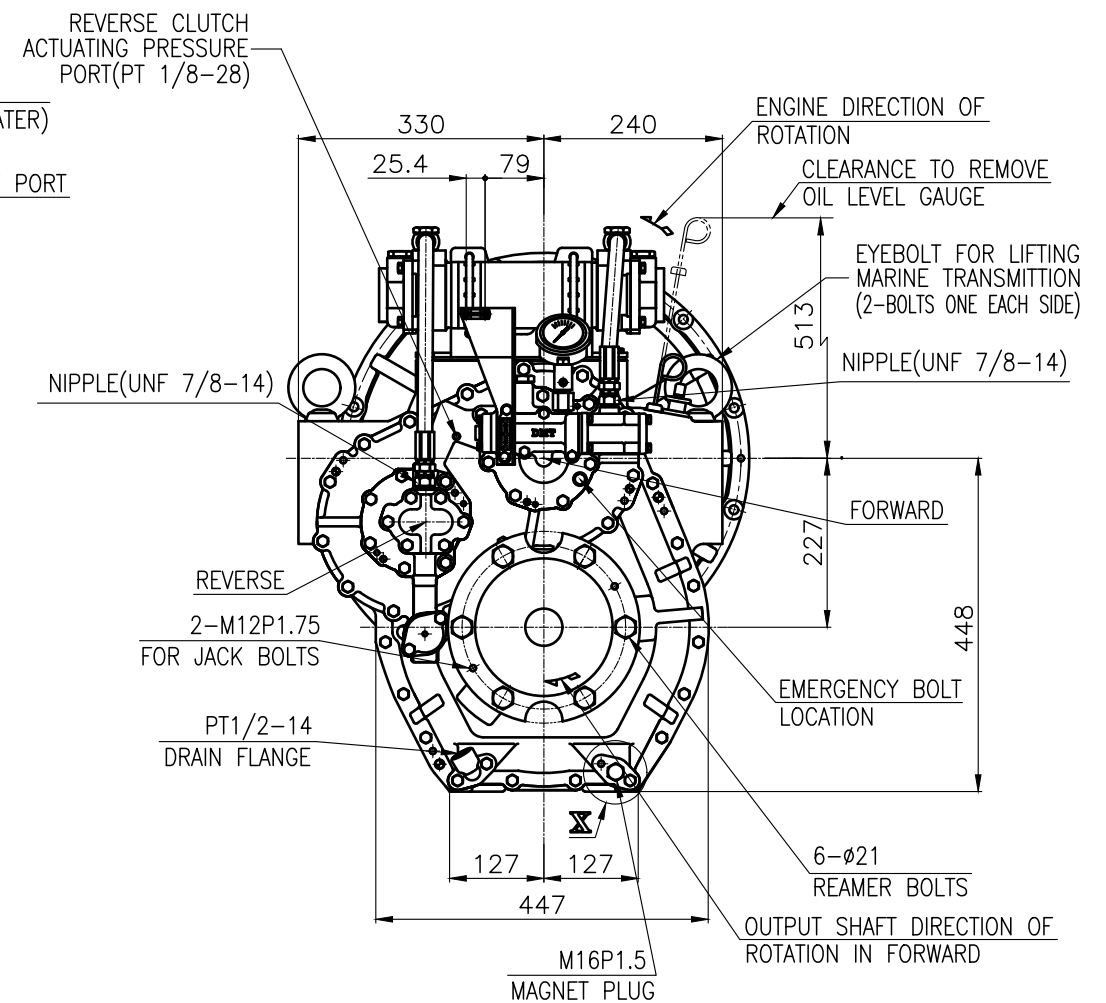
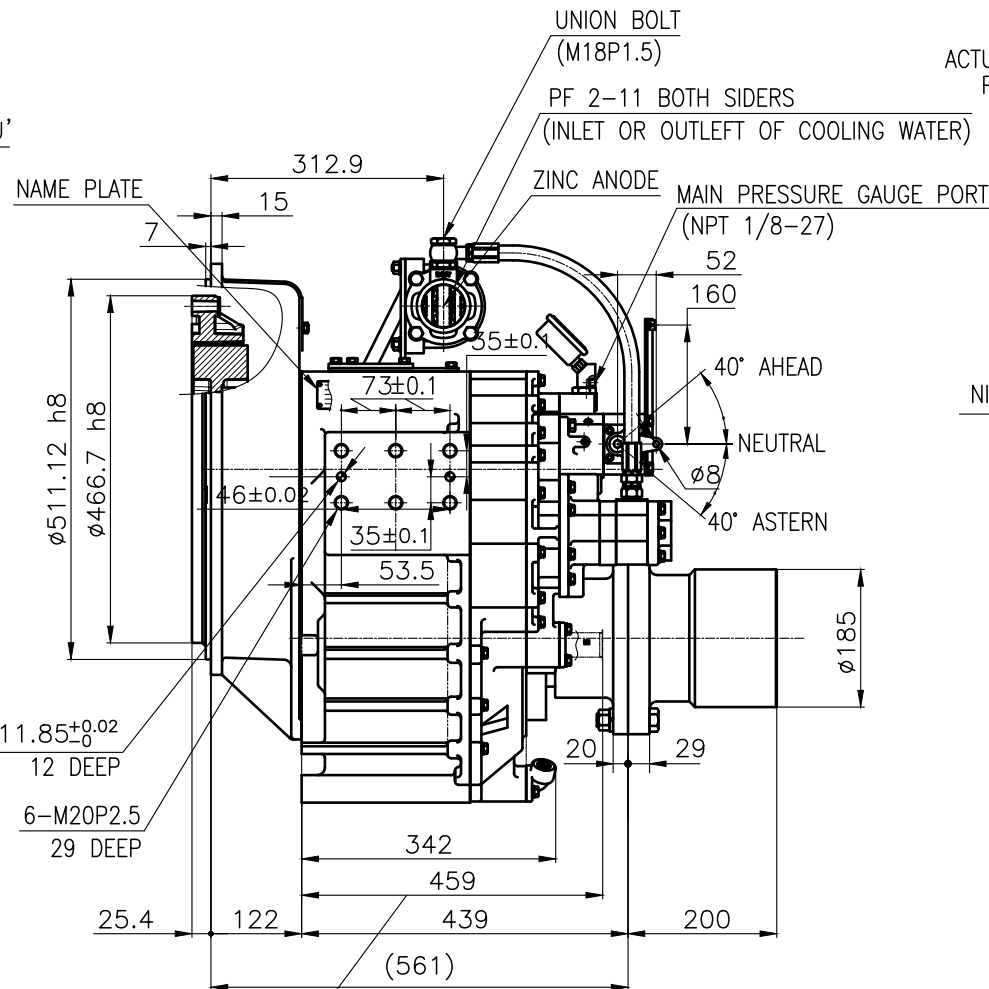
INPUT COUPLING DIMENSION



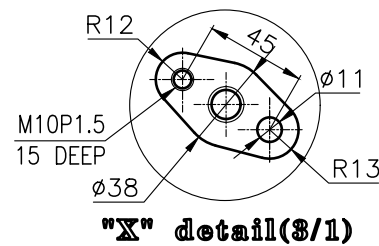
DMT240H MARINE TRANSMISSION SPECIFICATION			
GEAR RATIO	1.50 , 1.97 , 2.44 , 2.93 , 3.40		
TOTAL WEIGHT	APPROX. 400 Kg(DRY)		
OIL CAPACITY	APPROX. 8L		
OIL VISCOSITY	SAE # 30		
OIL PRESSURE	1.96 ~ 2.54 MPa	CLUTCH OIL	
DIRECTION OF ROTATION	INPUT	C.C.W VIEWED FROM THE STERN	
	OUTPUT	C.W VIEWED FROM THE STERN	
OIL CHANGE INTERVAL	THE FIRST 100HOURS OF INITIAL OPERATION AND EVERY 1000HOURS THEREAFTER		
SHIFTING LIMIT	UNDER 50% OF THE RATED ENGINE SPEED		
OIL COOLER	WATER FLOW 40 ~ 60 L/m		TEMPERATURE OF COOLING WATER MAX 32°C
	OPERATING TORQUE OF SHIFTING LEVER UNDER 2.94Nm		



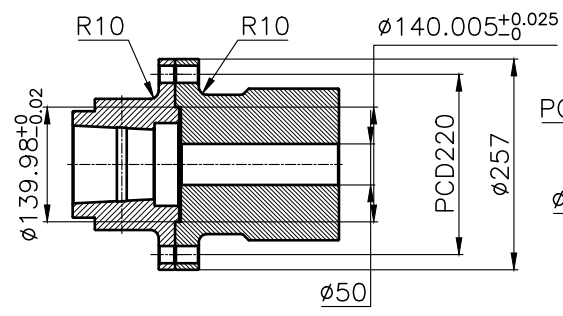
BRACKET DIMENSION



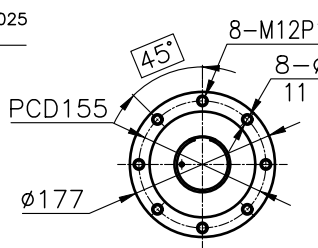
- REMARK
- 1.HOUSING: SAE#1
 - 2.DRIVING RING: SAE 14"
 - 3.COUPLING TYPE
CENTA Flex Coupling (77268801)



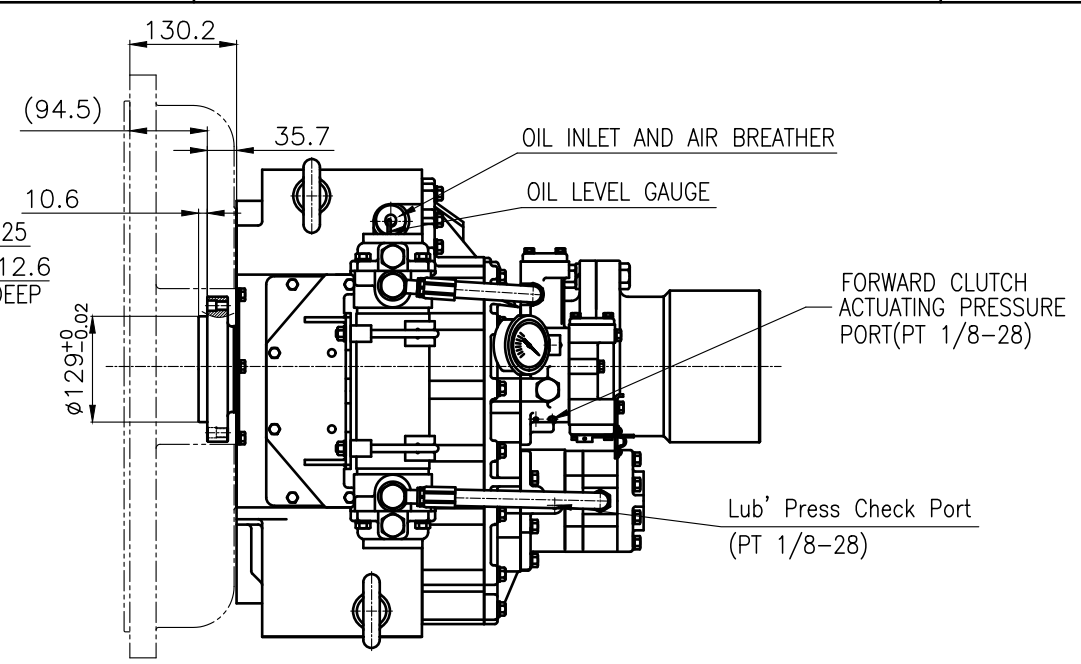
TOLERANCE ON				PART NO.		PART NAME		Q'TY	MATERIAL	SIZE	REMARKS																									
FRACTIONS	DECIMALS	ANGLES		NO.	REV.	NAME																														
±	±	±	±			DMT240H					ORIGINAL DWG. NO.																									
<table border="1"> <tr> <td>1</td> <td>초과 4 이하</td> <td>± 0.3</td> <td>± 0.1</td> <td>± 0.05</td> </tr> <tr> <td>4</td> <td>16</td> <td>± 0.5</td> <td>± 0.2</td> <td>± 0.07</td> </tr> <tr> <td>16</td> <td>63</td> <td>± 0.7</td> <td>± 0.3</td> <td>± 0.1</td> </tr> <tr> <td>63</td> <td>250</td> <td>± 1.2</td> <td>± 0.5</td> <td>± 0.2</td> </tr> <tr> <td>250</td> <td>1000</td> <td>± 2.0</td> <td>± 0.8</td> <td>± 0.3</td> </tr> </table>				1	초과 4 이하	± 0.3	± 0.1	± 0.05	4	16	± 0.5	± 0.2	± 0.07	16	63	± 0.7	± 0.3	± 0.1	63	250	± 1.2	± 0.5	± 0.2	250	1000	± 2.0	± 0.8	± 0.3	2018.06.29 SCALE 1/1		JK.Kim TH.Cha CH.Baek		MARINE TRANSMISSION		24000GA~E-114CFR	
1	초과 4 이하	± 0.3	± 0.1	± 0.05																																
4	16	± 0.5	± 0.2	± 0.07																																
16	63	± 0.7	± 0.3	± 0.1																																
63	250	± 1.2	± 0.5	± 0.2																																
250	1000	± 2.0	± 0.8	± 0.3																																
D-I INDUSTRIAL										SIZE A 3																										



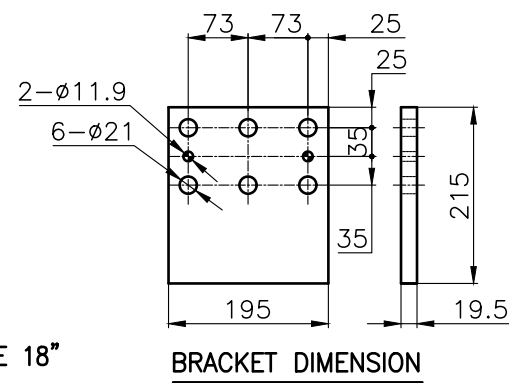
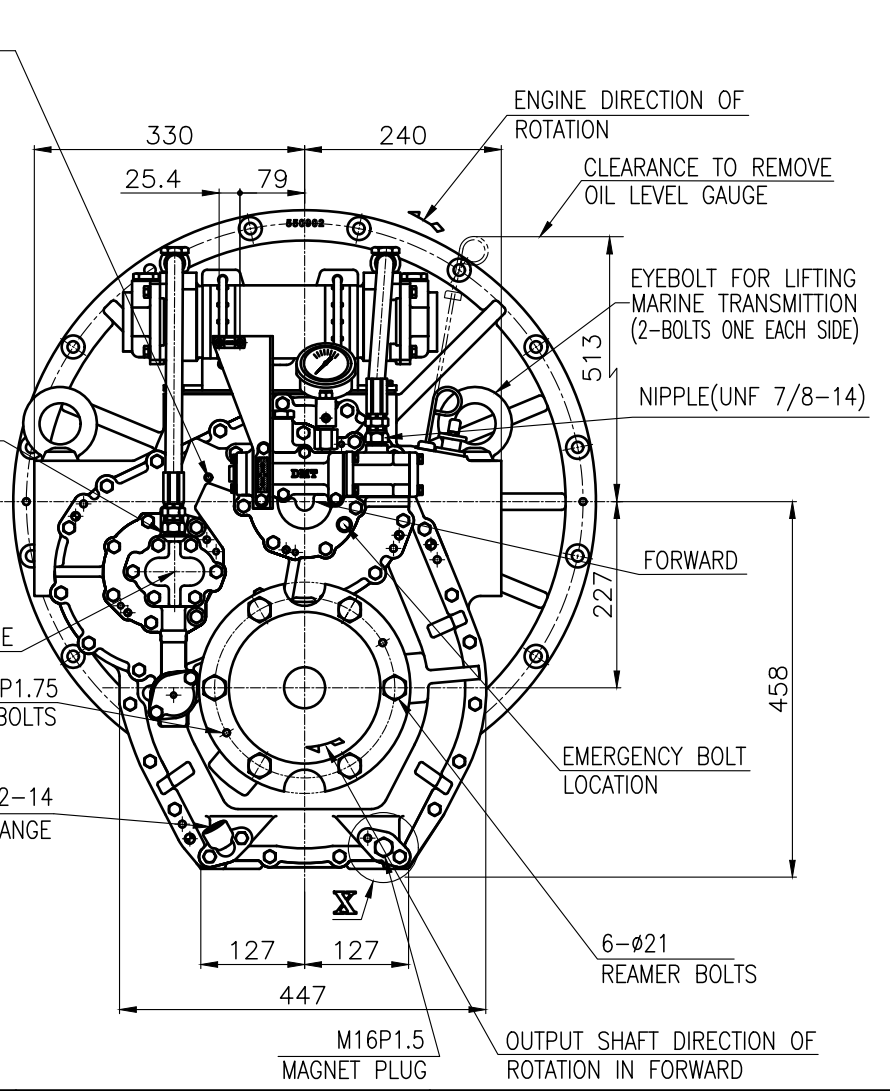
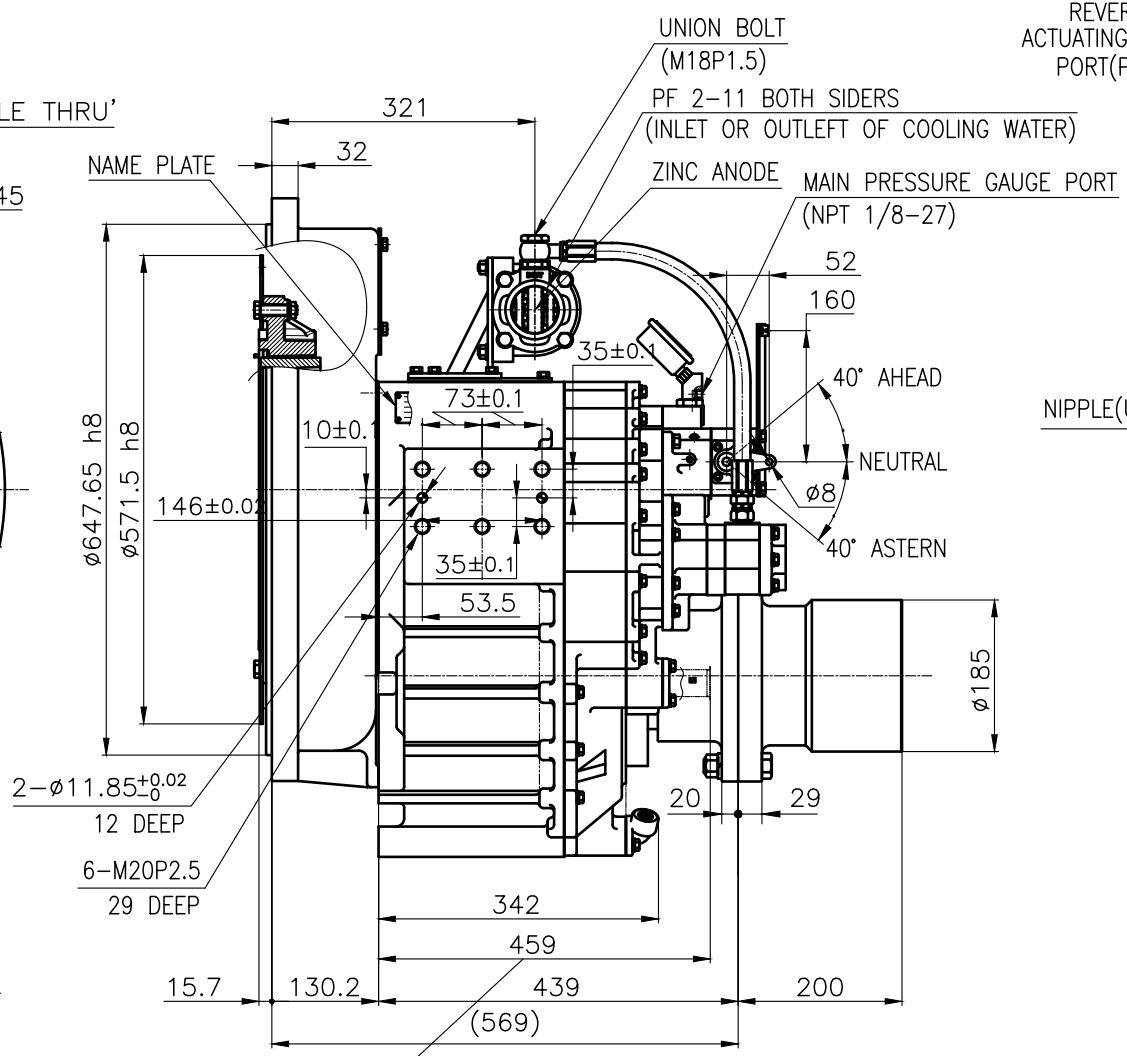
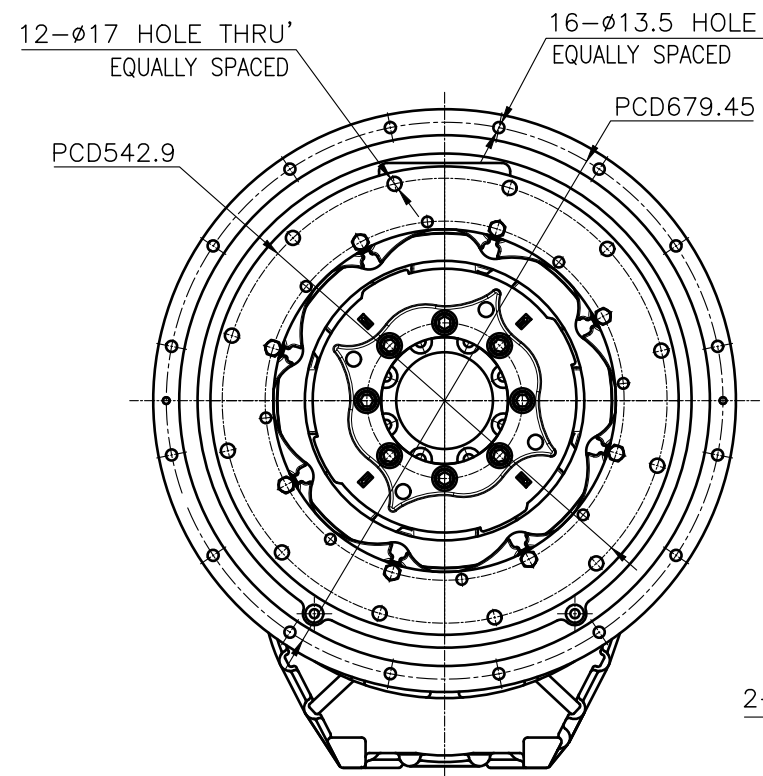
OUTPUT SHAFT COUPLING & PROPELLER COUPLING DIMENSION



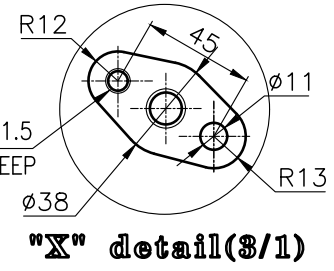
INPUT COUPLING DIMENSION



DMT240H MARINE TRANSMISSION SPECIFICATION			
GEAR RATIO	1.50 , 1.97 , 2.44 , 2.93 , 3.40		
TOTAL WEIGHT	APPROX. 400 Kg(DRY)		
OIL CAPACITY	APPROX. 8L		
OIL VISCOSITY	SAE # 30		
OIL PRESSURE	1.96 ~ 2.54 MPa	CLUTCH OIL	
DIRECTION OF ROTATION	INPUT	C.C.W VIEWED FROM THE STERN	
	OUTPUT	C.W VIEWED FROM THE STERN	
OIL CHANGE INTERVAL	THE FIRST 100HOURS OF INITIAL OPERATION AND EVERY 1000HOURS THEREAFTER		
SHIFTING LIMIT	UNDER 50% OF THE RATED ENGINE SPEED		
OIL COOLER	WATER FLOW		40 ~ 60 L/m
	TEMPERATURE OF COOLING WATER		MAX 32°C
OPERATING TORQUE OF SHIFTING LEVER	UNDER 2.94Nm		



BRACKET DIMENSION



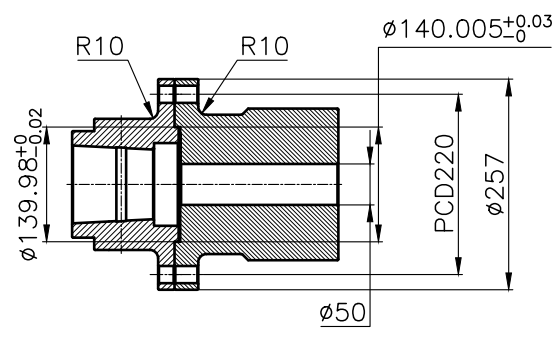
"X" detail(3/1)

- REMARK
- 1.HOUSING: SAE#0
 - 2.DRIVING RING: SAE 18"
 - 3.COUPLING TYPE
CENTA Flex Coupling (77268802)

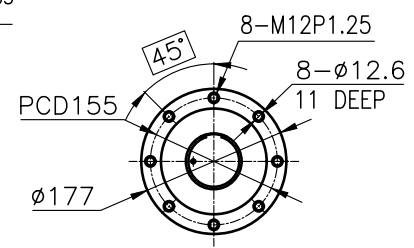
공통공차 TOLERANCE ON				PART NO.		PART NAME		QTY	MATERIAL	SIZE	REMARKS
분수	소수	각도	공차	번호	명칭	수량	재질	규격	비고		
±	±	±	±								
1 초과 4 이하	± 0.3	± 0.1	± 0.05								
4 ~ 16	± 0.5	± 0.2	± 0.07								
16 ~ 63	± 0.7	± 0.3	± 0.1								
63 ~ 250	± 1.2	± 0.5	± 0.2								
250 ~ 1000	± 2.0	± 0.8	± 0.3								

작성 DATE	2018.06.29	척도 SCALE	1/1
APPROVED BY	JK.Kim	CHECKED BY	TH.Cha
		DESIGNED	CH.Baek

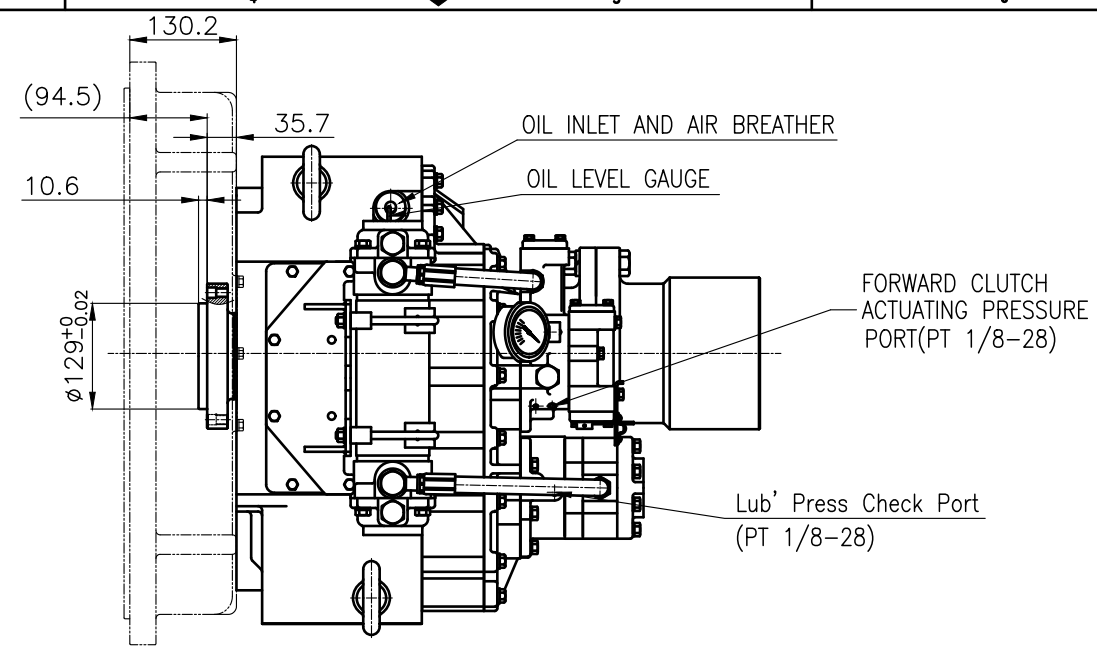
TYPE	DMT240H	ORIGINAL DWG. NO.	
NAME	MARINE TRANSMISSION	도 번호 DWG. NO.	24000GA~E-018CFR
크기 SIZE	A3	코드 번호 CODE ID. NO.	



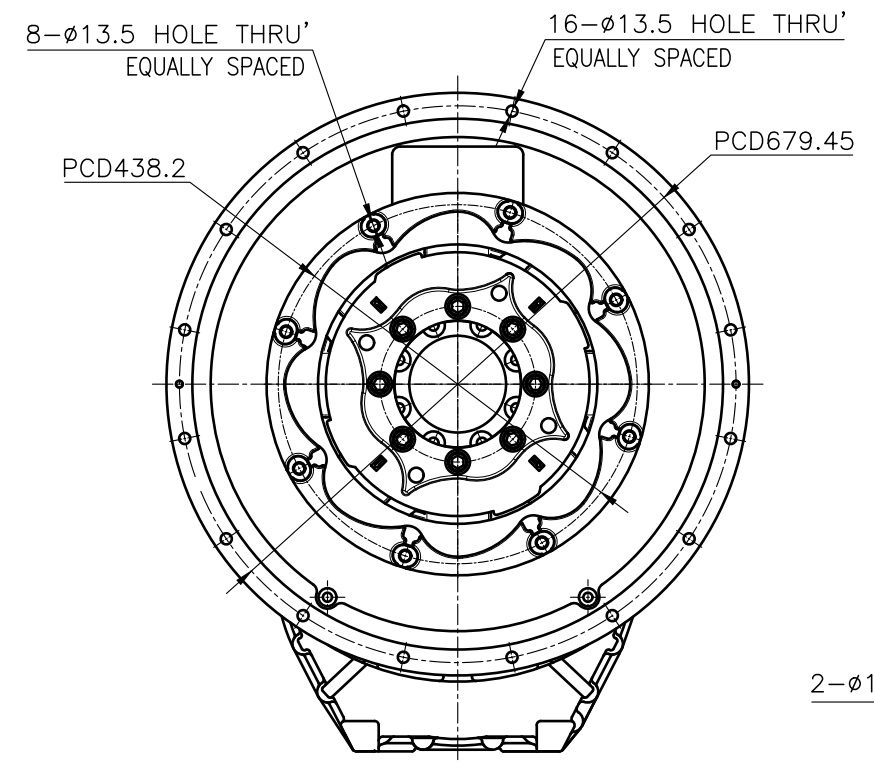
OUTPUT SHAFT COUPLING & PROPELLER COUPLING DIMENSION



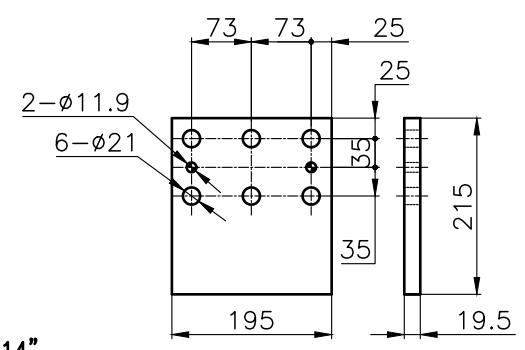
INPUT COUPLING DIMENSION



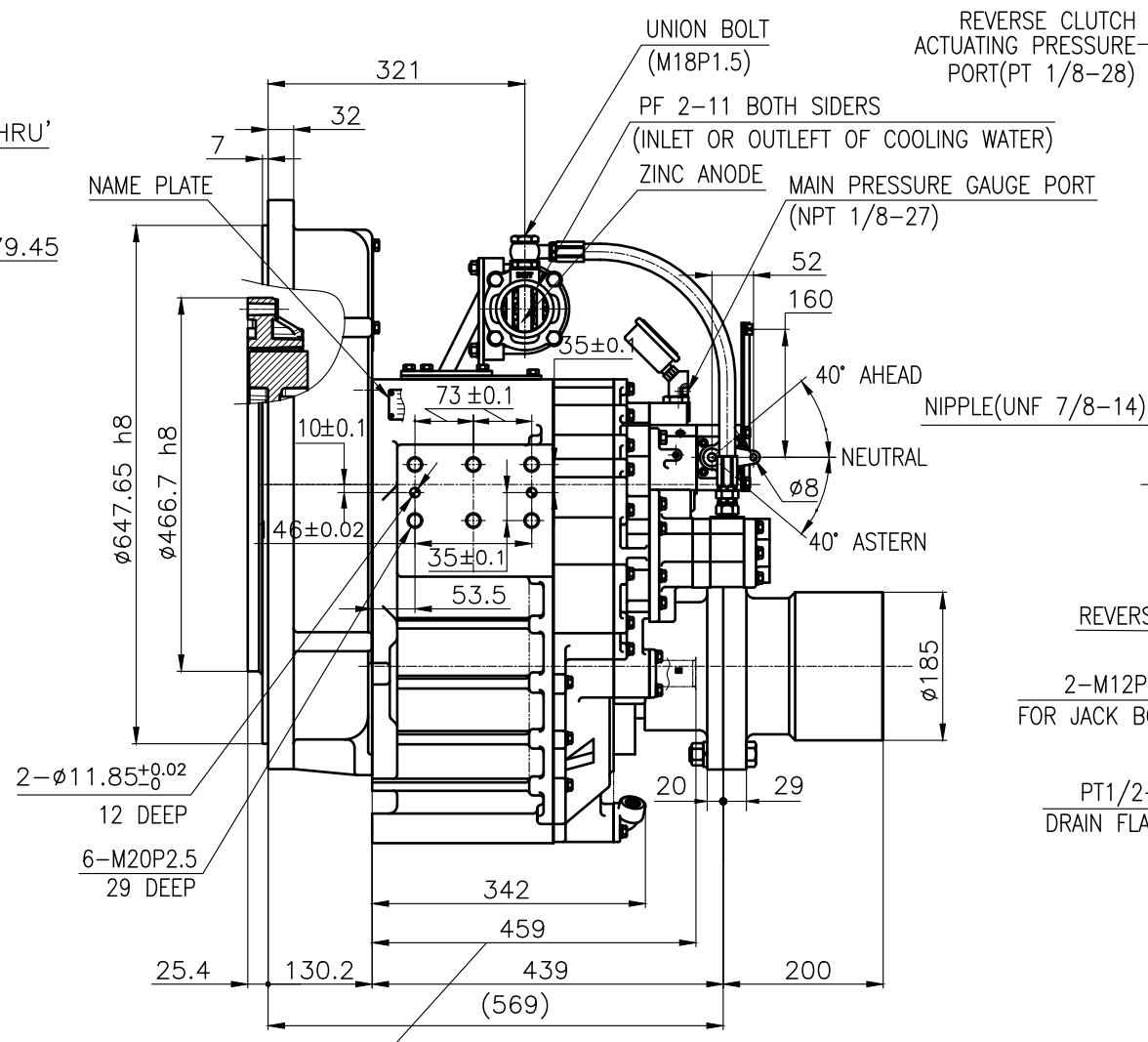
DMT240H MARINE TRANSMISSION SPECIFICATION			
GEAR RATIO	1.50 , 1.97 , 2.44 , 2.93 , 3.40		
TOTAL WEIGHT	APPROX. 400 Kg(DRY)		
OIL CAPACITY	APPROX. 8L		
OIL VISCOSITY	SAE # 30		
OIL PRESSURE	1.96 ~ 2.54 MPa	CLUTCH OIL	
DIRECTION OF ROTATION	INPUT	C.C.W VIEWED FROM THE STERN	
	OUTPUT	C.W VIEWED FROM THE STERN	
OIL CHANGE INTERVAL	THE FIRST 100HOURS OF INITIAL OPERATION AND EVERY 1000HOURS THEREAFTER		
SHIFTING LIMIT	UNDER 50% OF THE RATED ENGINE SPEED		
OIL COOLER	WATER FLOW	40 ~ 60 L/m	
	TEMPERATURE OF COOLING WATER	MAX 32°C	
OPERATING TORQUE OF SHIFTING LEVER	UNDER 2.94Nm		



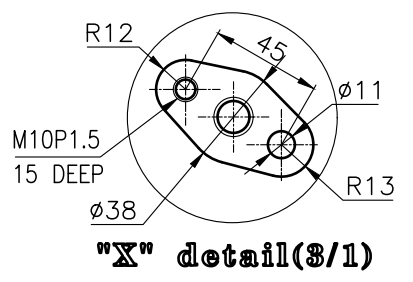
REMARK
1.HOUSING: SAE#0
2.DRIVING RING: SAE 14"
3.COUPLING TYPE
-CENTA Flex Coupling : 77268803



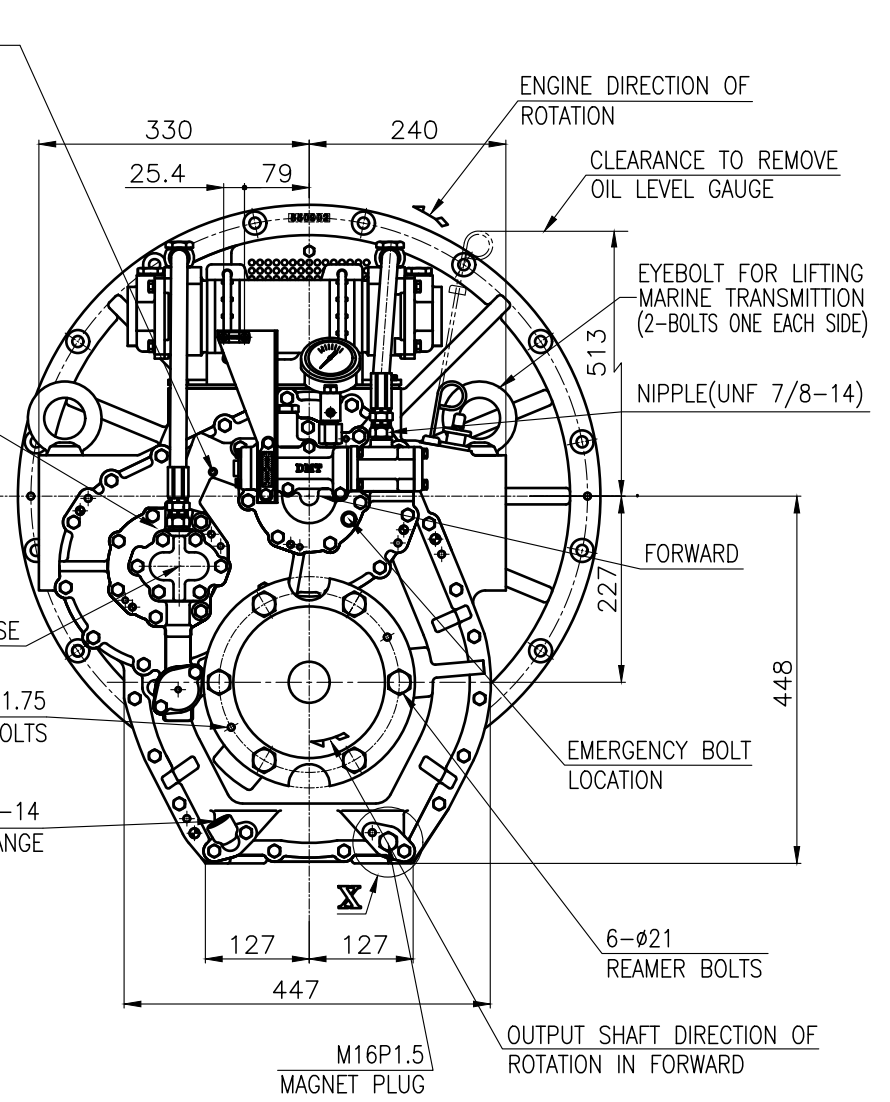
BRACKET DIMENSION



CLEARANCE TO REMOVE OIL SUCTION STRAINER

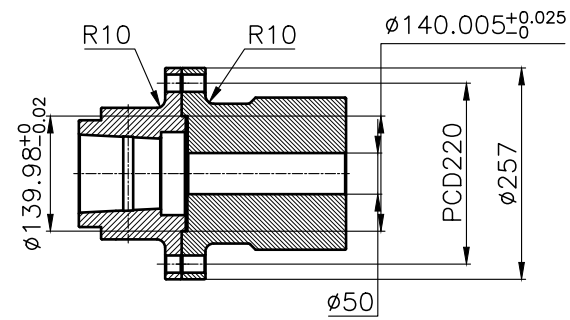


"X" detail(3/1)

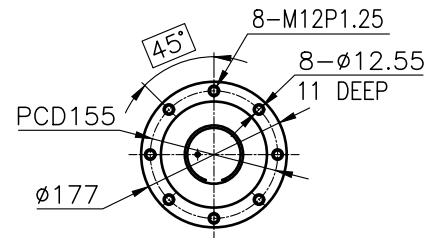


TOLERANCE ON				PART NO.		PART NAME		Q'TY		MATERIAL		SIZE		REMARKS	
FRACTIONS	DECIMALS	ANGLES	±	±	±	±	±	±	±	±	±	±	±	±	±
1/1000	±0.001	±0.1	±	±	±	±	±	±	±	±	±	±	±	±	±
1/500	±0.002	±0.2	±	±	±	±	±	±	±	±	±	±	±	±	±
1/250	±0.004	±0.4	±	±	±	±	±	±	±	±	±	±	±	±	±
1/125	±0.008	±0.8	±	±	±	±	±	±	±	±	±	±	±	±	±
1/63	±0.016	±1.6	±	±	±	±	±	±	±	±	±	±	±	±	±
1/32	±0.032	±3.2	±	±	±	±	±	±	±	±	±	±	±	±	±
1/16	±0.063	±6.3	±	±	±	±	±	±	±	±	±	±	±	±	±
1/8	±0.125	±12.5	±	±	±	±	±	±	±	±	±	±	±	±	±
1/4	±0.25	±25	±	±	±	±	±	±	±	±	±	±	±	±	±
1/2	±0.5	±50	±	±	±	±	±	±	±	±	±	±	±	±	±
1	±1.0	±100	±	±	±	±	±	±	±	±	±	±	±	±	±

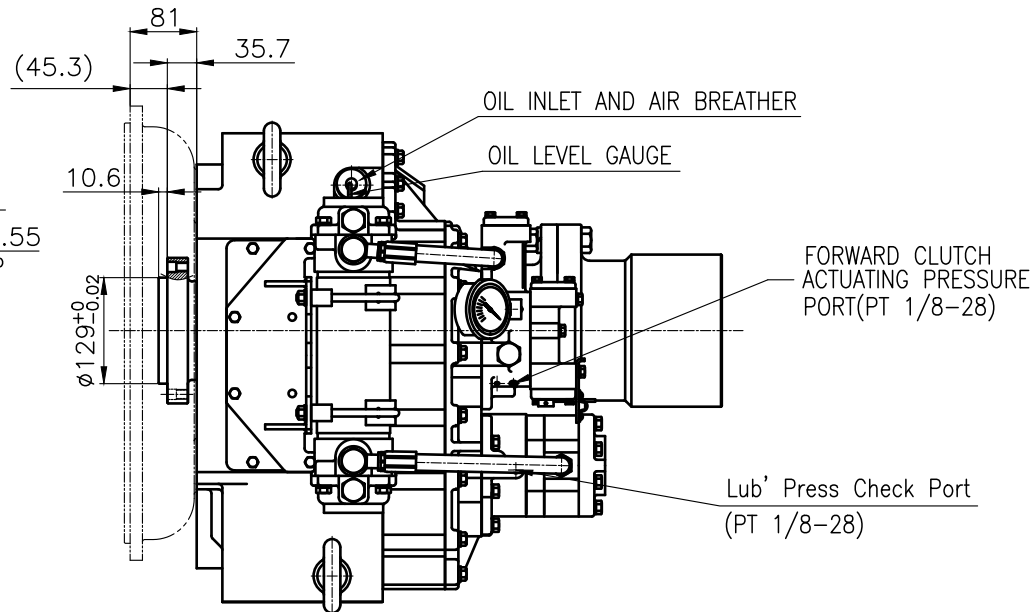
번호 NO.	24000GA~E-014CFR	제명 MATERIAL	DMT240H	형식 TYPE	DMT240H
작성 DATE	2018.06.29	척도 SCALE	1/1	품명 NAME	MARINE TRANSMISSION
승인 BY	JK.Kim	검도 CHECKED BY	TH.Cha	제도 DESIGNED BY	CH.Baek
도번 DWG. NO.	24000GA~E-014CFR	도번 DWG. NO.	24000GA~E-014CFR	크기 SIZE	A 3
D-I INDUSTRIAL			코드 번호 CODE ID. NO.		



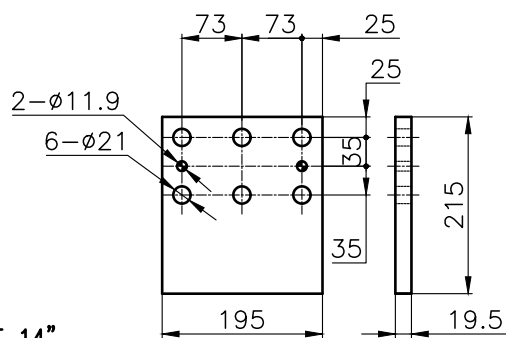
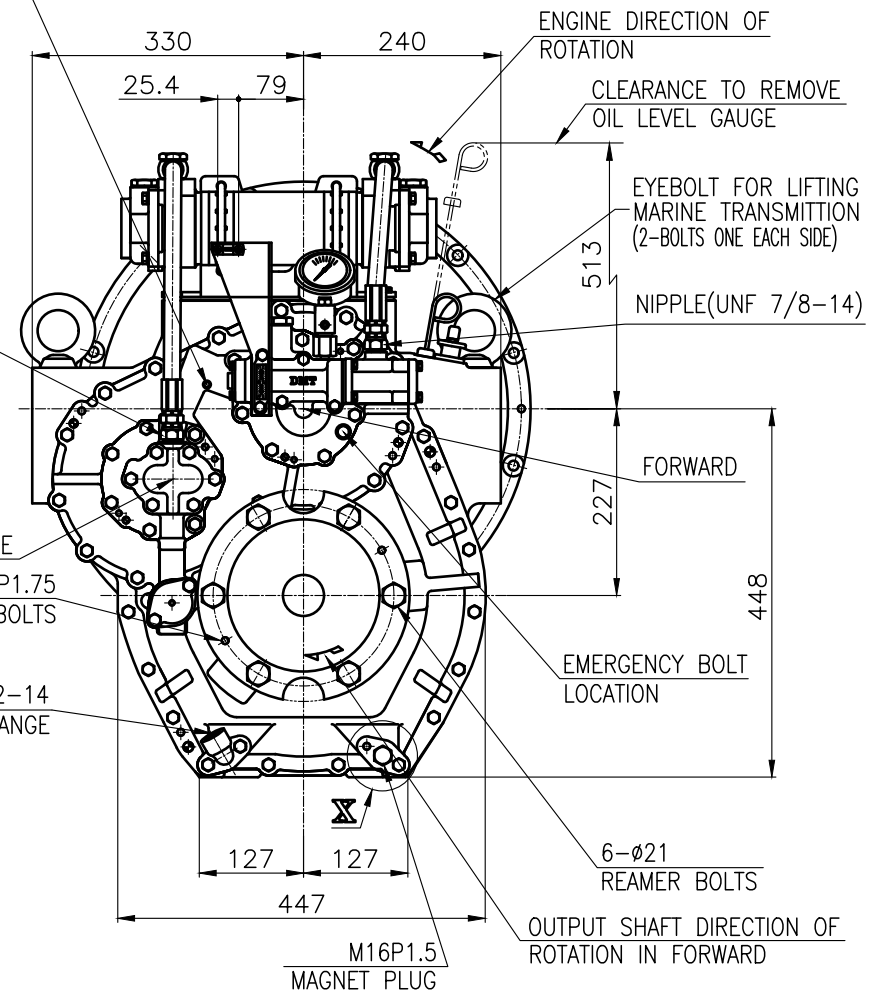
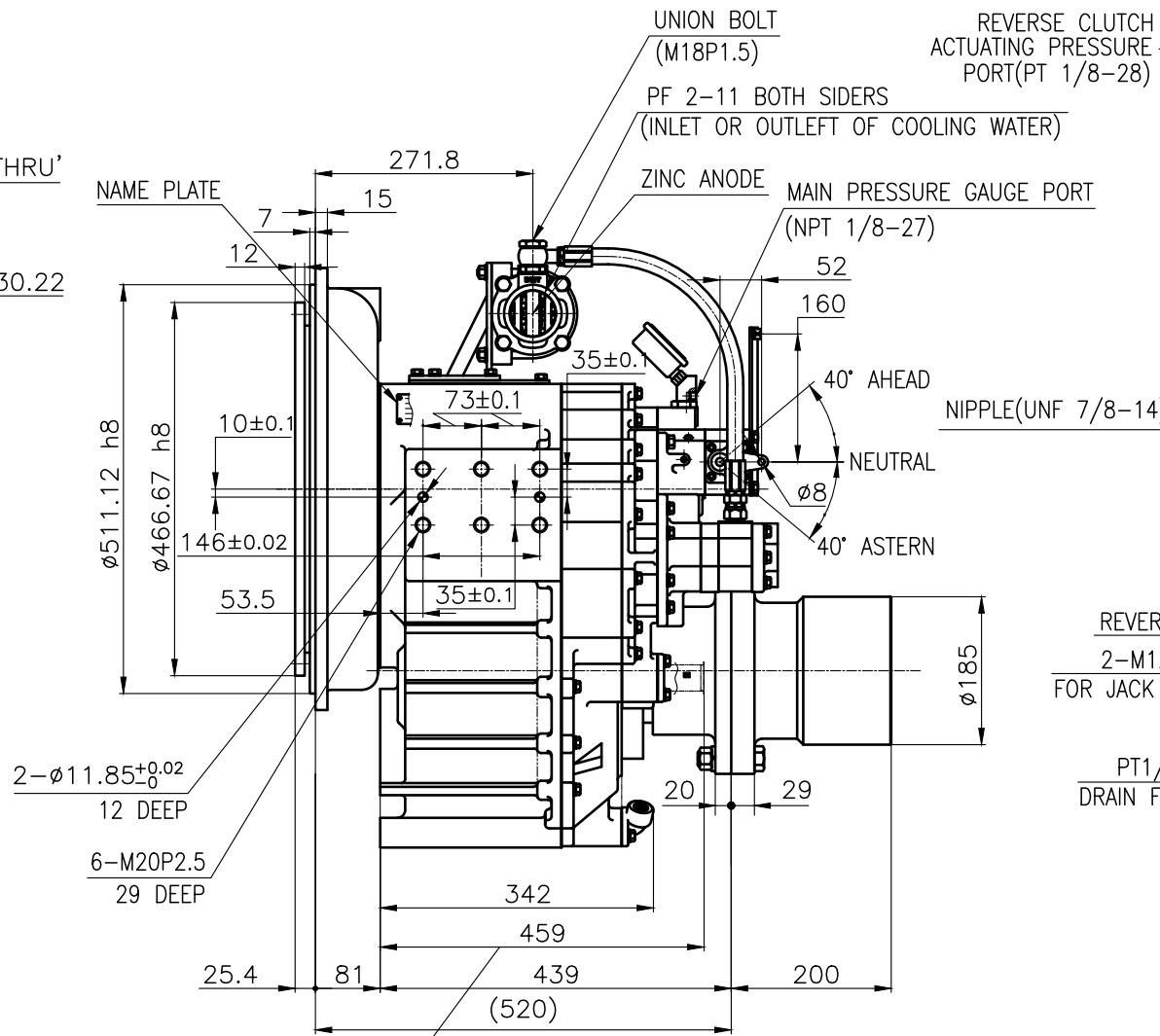
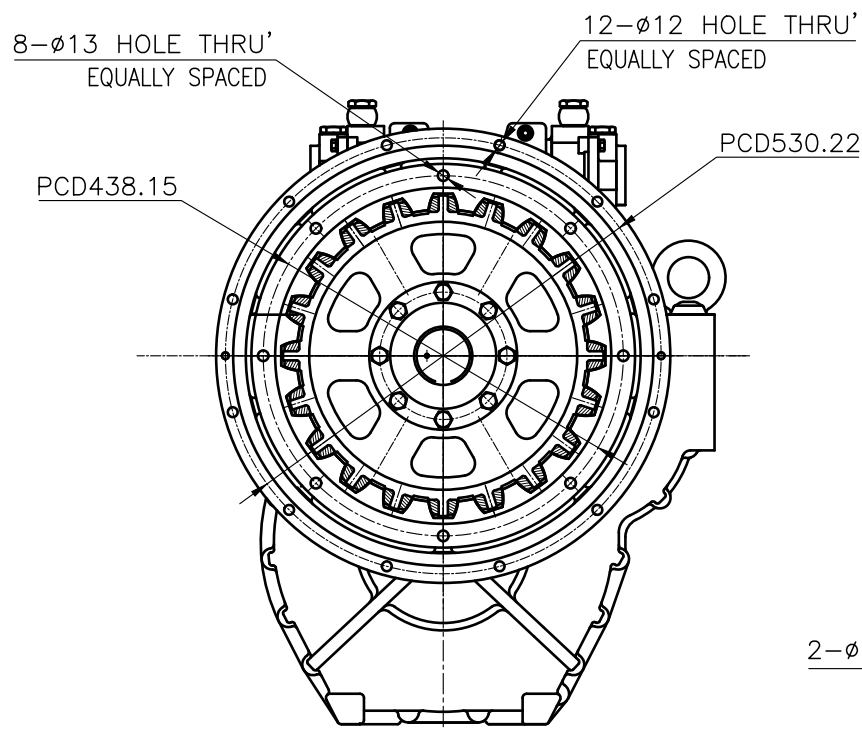
OUTPUT SHAFT COUPLING & PROPELLER COUPLING DIMENSION



INPUT COUPLING DIMENSION



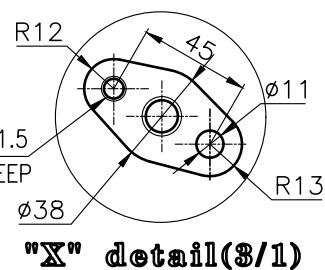
GEAR RATIO	1.50 , 1.97 , 2.44 , 2.93 , 3.40	
TOTAL WEIGHT	APPROX. 400 Kg(DRY)	
OIL CAPACITY	APPROX. 8L	
OIL VISCOSITY	SAE # 30	
OIL PRESSURE	1.96 ~ 2.54 MPa	CLUTCH OIL
DIRECTION OF ROTATION	INPUT	C.C.W VIEWED FROM THE STERN
	OUTPUT	C.W VIEWED FROM THE STERN
OIL CHANGE INTERVAL	THE FIRST 100HOURS OF INITIAL OPERATION AND EVERY 1000HOURS THEREAFTER	
SHIFTING LIMIT	UNDER 50% OF THE RATED ENGINE SPEED	
OIL COOLER	WATER FLOW	40 ~ 60 L/m
	TEMPERATURE OF COOLING WATER	MAX 32°C
OPERATING TORQUE OF SHIFTING LEVER	UNDER 2.94Nm	



BRACKET DIMENSION

- REMARK
- HOUSING: SAE#1
 - DRIVING RING: SAE 14"
 - COUPLING TYPE : RUBBER

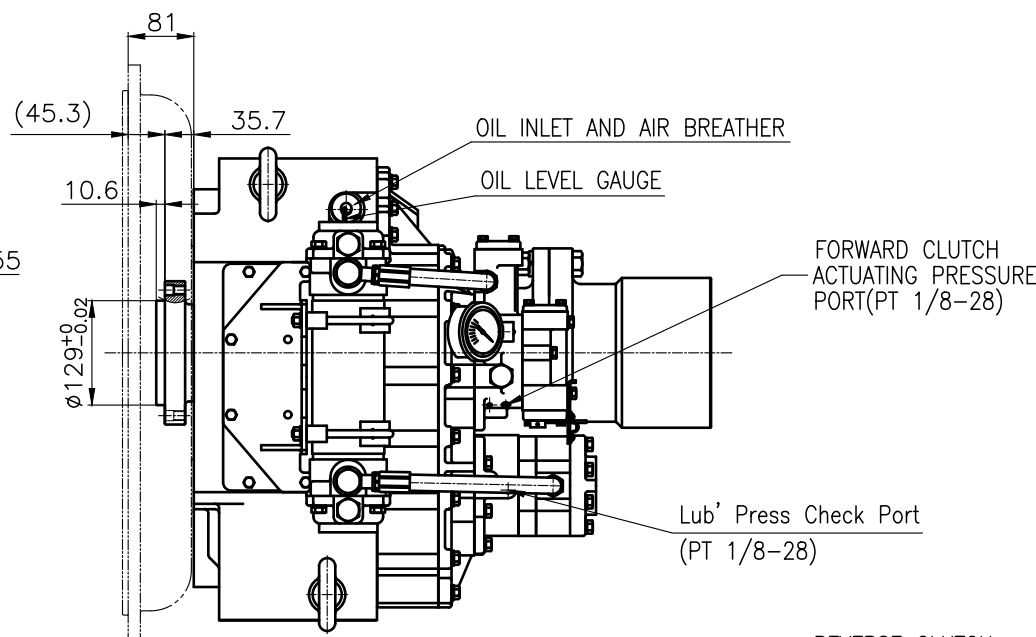
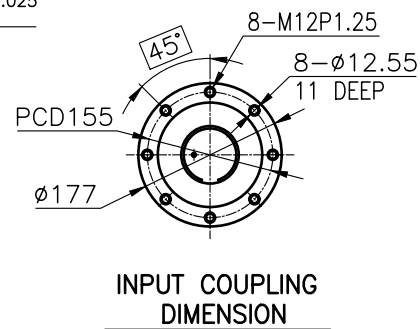
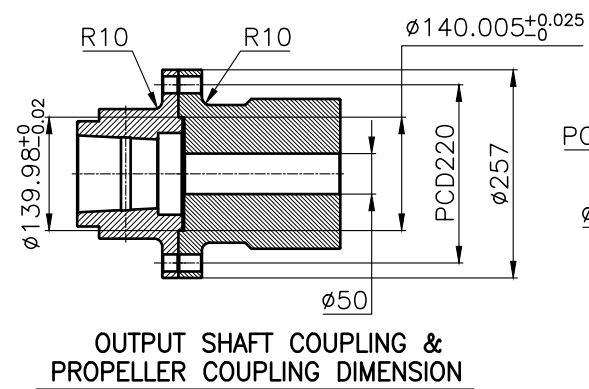
CLEARANCE TO REMOVE OIL SUCTION STRAINER



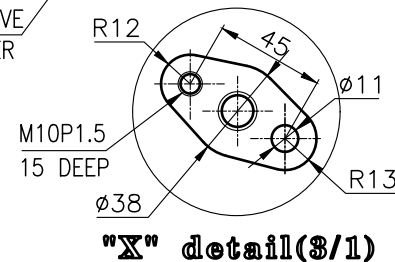
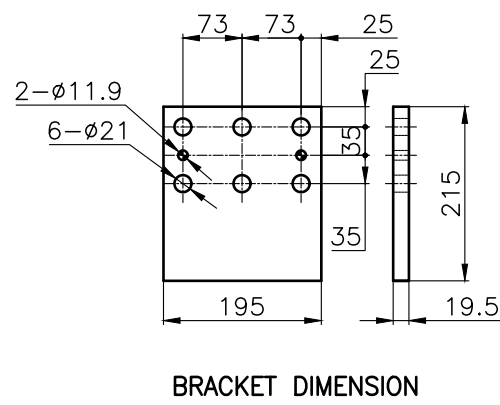
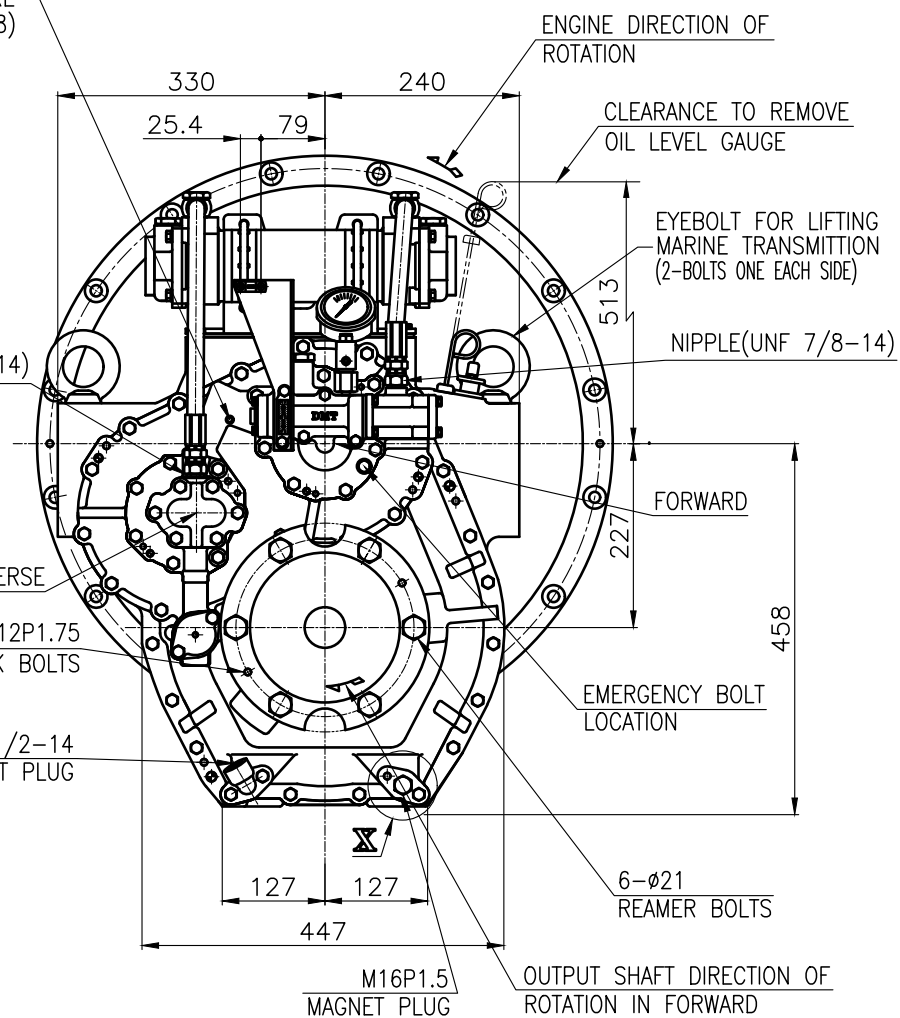
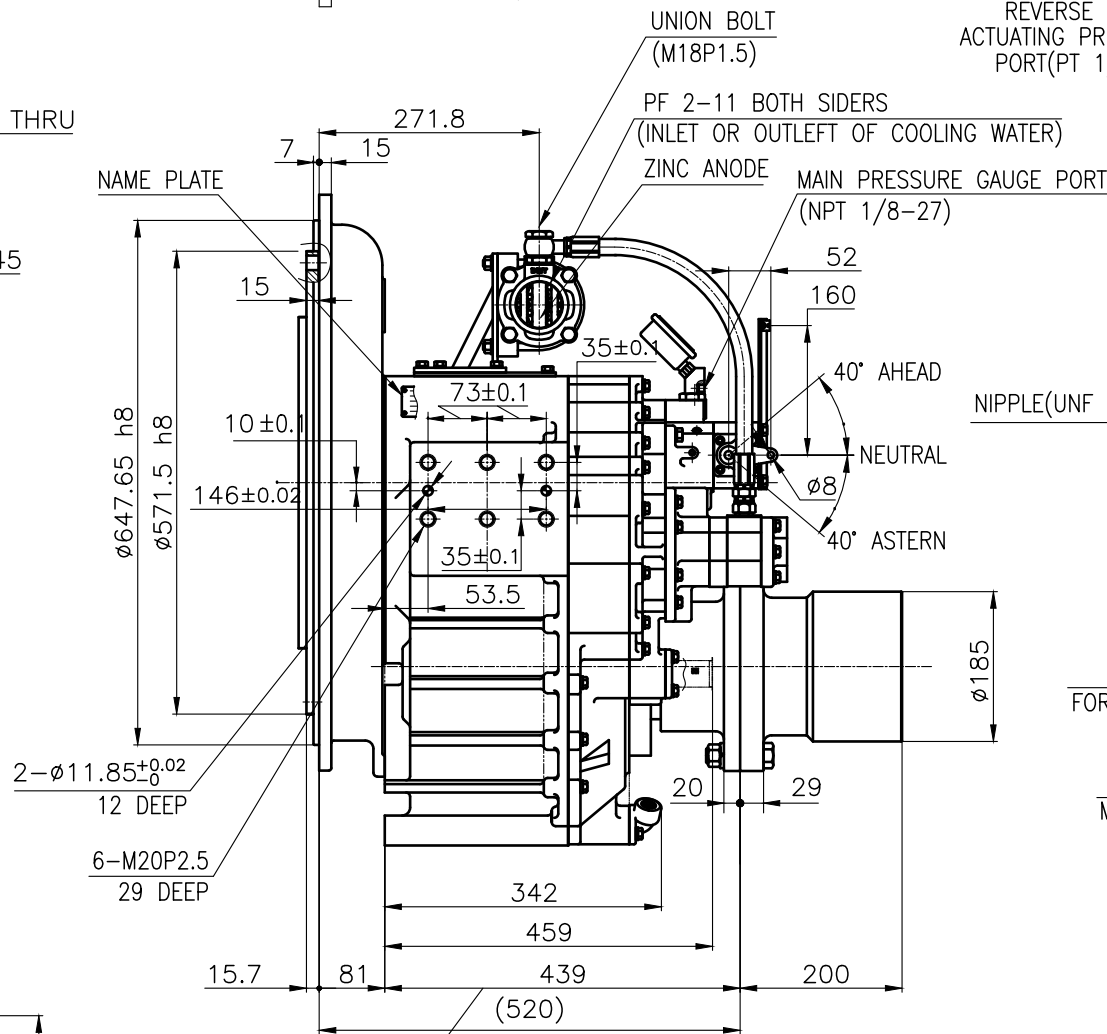
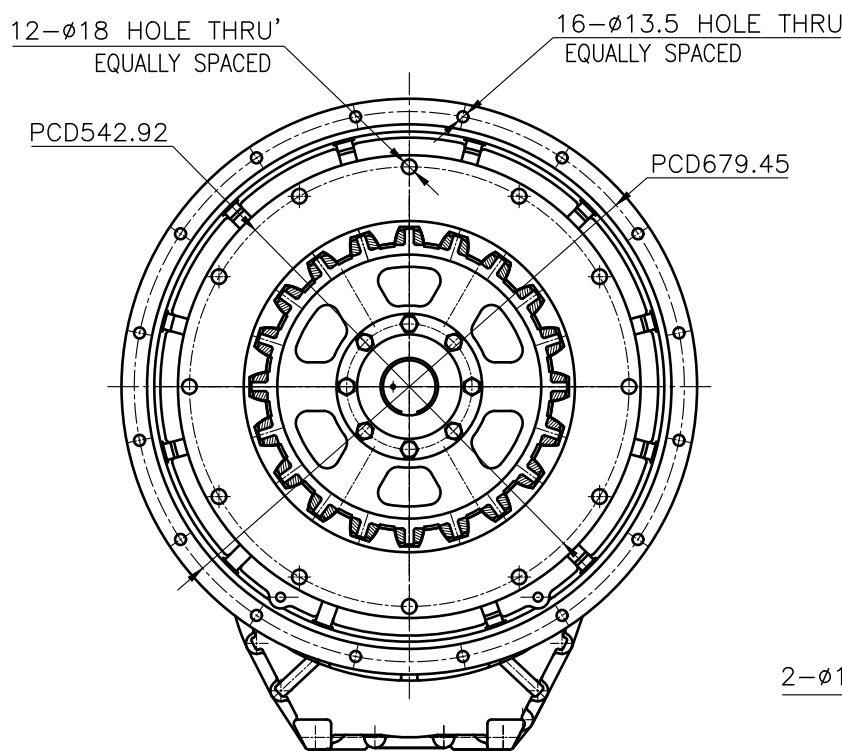
"X" detail(3/1)

公差公差 TOLERANCE ON				PART NO.		PART NAME		REMARKS	
분수	소수	각도	분수	DECIMALS	각도	분수	DECIMALS	각도	REMARKS
±	±	±	±	±	±	±	±	±	
1/1000	0.001	1	0.01	0.01	0.1	0.1	0.05		
1/500	0.002	1	0.02	0.02	0.2	0.2	0.07		
1/250	0.004	1	0.04	0.04	0.4	0.4	0.1		
1/125	0.008	1	0.08	0.08	0.8	0.8	0.2		
1/63	0.016	1	0.16	0.16	1.6	1.6	0.3		
1/32	0.032	1	0.32	0.32	3.2	3.2	0.5		
1/16	0.063	1	0.63	0.63	6.3	6.3	0.8		
1/8	0.125	1	1.25	1.25	12.5	12.5	1.0		
1/4	0.25	1	2.5	2.5	25	25	1.5		
1/2	0.5	1	5	5	50	50	2.0		

번호 NO.	24000GA~E-114RC	제 DATE	2018.06.29	척도 SCALE	1/1	형식 TYPE	DMT240H	원도번호 ORIGINAL DWG. NO.	
인 BY	JK.Kim	검도 BY	TH.Cha	제도 DRAWN	MA.Kim	품명 NAME	MARINE TRANSMISSION	개정(REV.)	000
도 DWG. NO.	24000GA~E-114RC	크기 SIZE	A3	코드번호 CODE ID. NO.					



DMT240H MARINE TRANSMISSION SPECIFICATION			
GEAR RATIO	1.50 , 1.97 , 2.44 , 2.93 , 3.40		
TOTAL WEIGHT	APPROX. 400 Kg(DRY)		
OIL CAPACITY	APPROX. 8L		
OIL VISCOSITY	SAE # 30		
OIL PRESSURE	1.96 ~ 2.54 MPa	CLUTCH OIL	
DIRECTION OF ROTATION	INPUT	C.C.W VIEWED FROM THE STERN	
	OUTPUT	C.W VIEWED FROM THE STERN	
OIL CHANGE INTERVAL	THE FIRST 100HOURS OF INITIAL OPERATION AND EVERY 1000HOURS THEREAFTER		
SHIFTING LIMIT	UNDER 50% OF THE RATED ENGINE SPEED		
OIL COOLER	WATER FLOW		40 ~ 60 L/m
	TEMPERATURE OF COOLING WATER		MAX 32°C
OPERATING TORQUE OF SHIFTING LEVER	UNDER 2.94Nm		

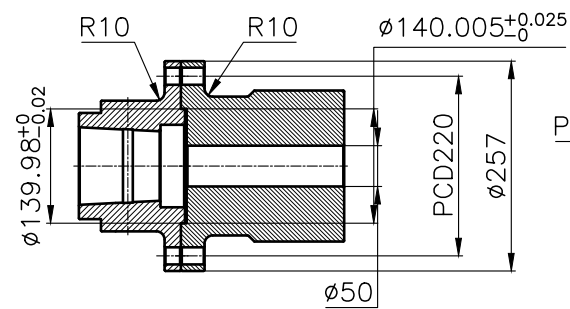


REMARK
1.HOUSING: SAE#0
2.DRIVING RING: SAE 18"
3.COUPLING TYPE : RUBBER

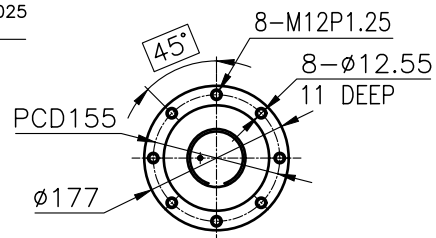
공정공차 TOLERANCE ON				PART NO.		PART NAME		QTY		MATERIAL		SIZE		REMARKS		
분수	소수	각도		제	집	형	식	제	집	구	대	비	고	REMARKS		
FRACTIONS	DECIMALS	ANGLES		MATERIAL		TYPE		MATERIAL		SIZE		비	고	REMARKS		
±	±	±	±			DMT240H								ORIGINAL DWG. NO.		
절삭가공				DATE	SCALE	MARINE TRANSMISSION										
				2018.06.29	1/1											
1	초과 4 이하	± 0.3	± 0.1	± 0.05	APPROVED BY	CHECKED BY	DESIGNED	NAME		DWG. NO.		24000GA~E-018RC		개정(REV.)		
4	16	± 0.5	± 0.2	± 0.07	JK.Kim	TH.Cha	MA.Kim							000		
16	63	± 0.7	± 0.3	± 0.1												
63	250	± 1.2	± 0.5	± 0.2												
250	1000	± 2.0	± 0.8	± 0.3												

D-I INDUSTRIAL

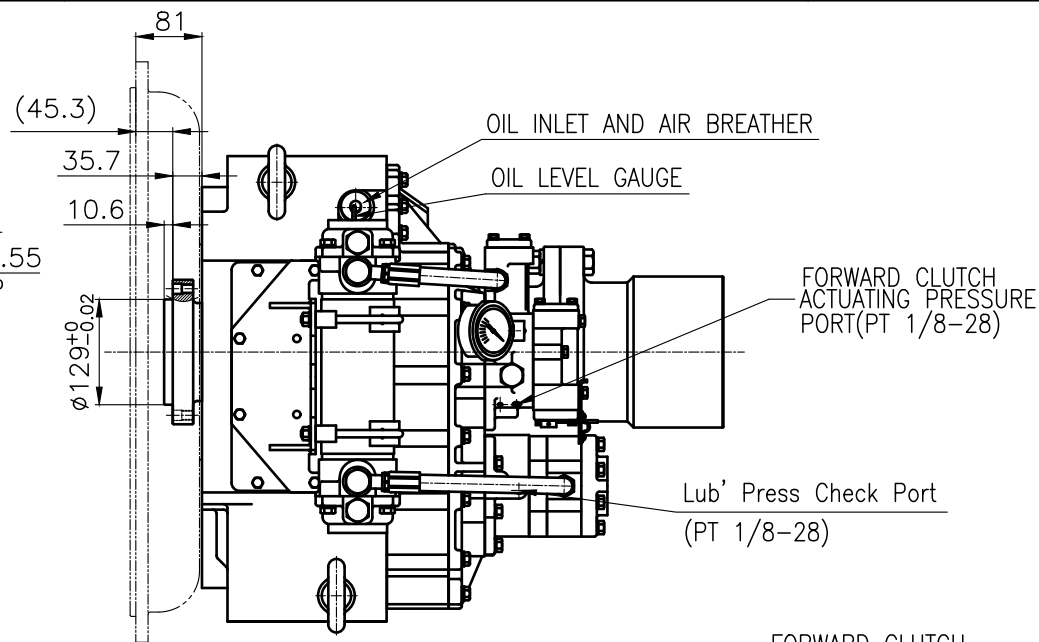
SIZE A 8 CODE ID. NO.



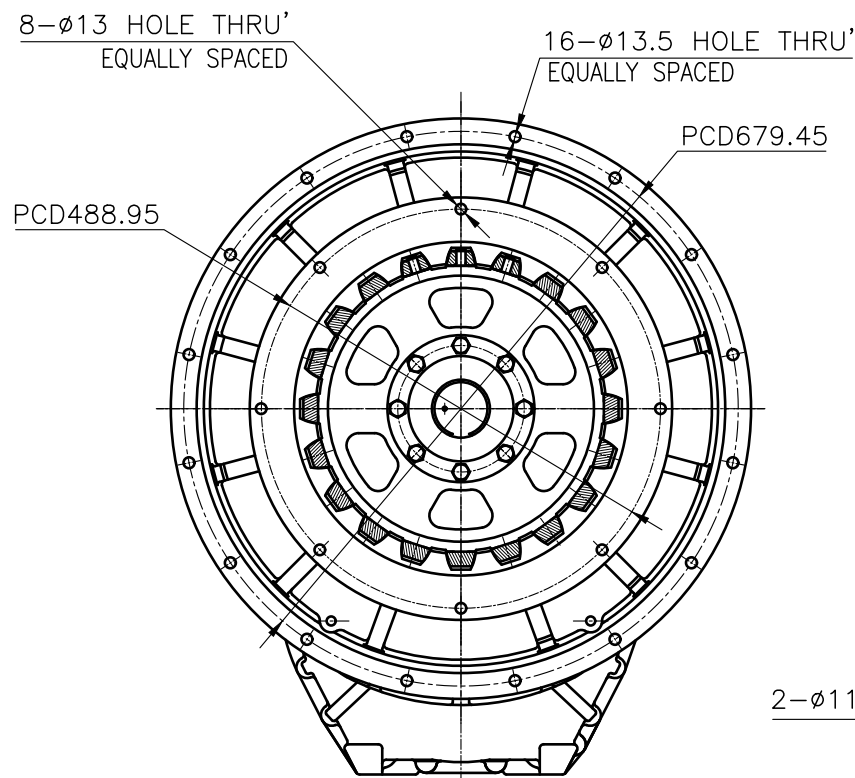
OUTPUT SHAFT COUPLING & PROPELLER COUPLING DIMENSION



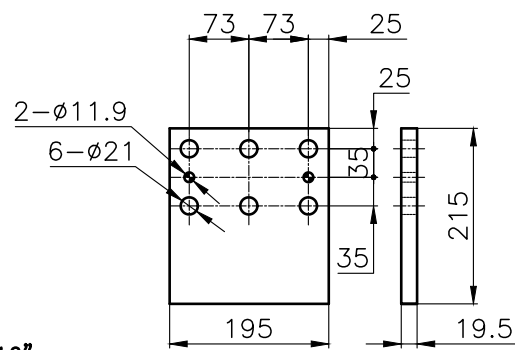
INPUT COUPLING DIMENSION



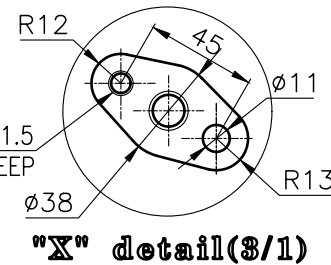
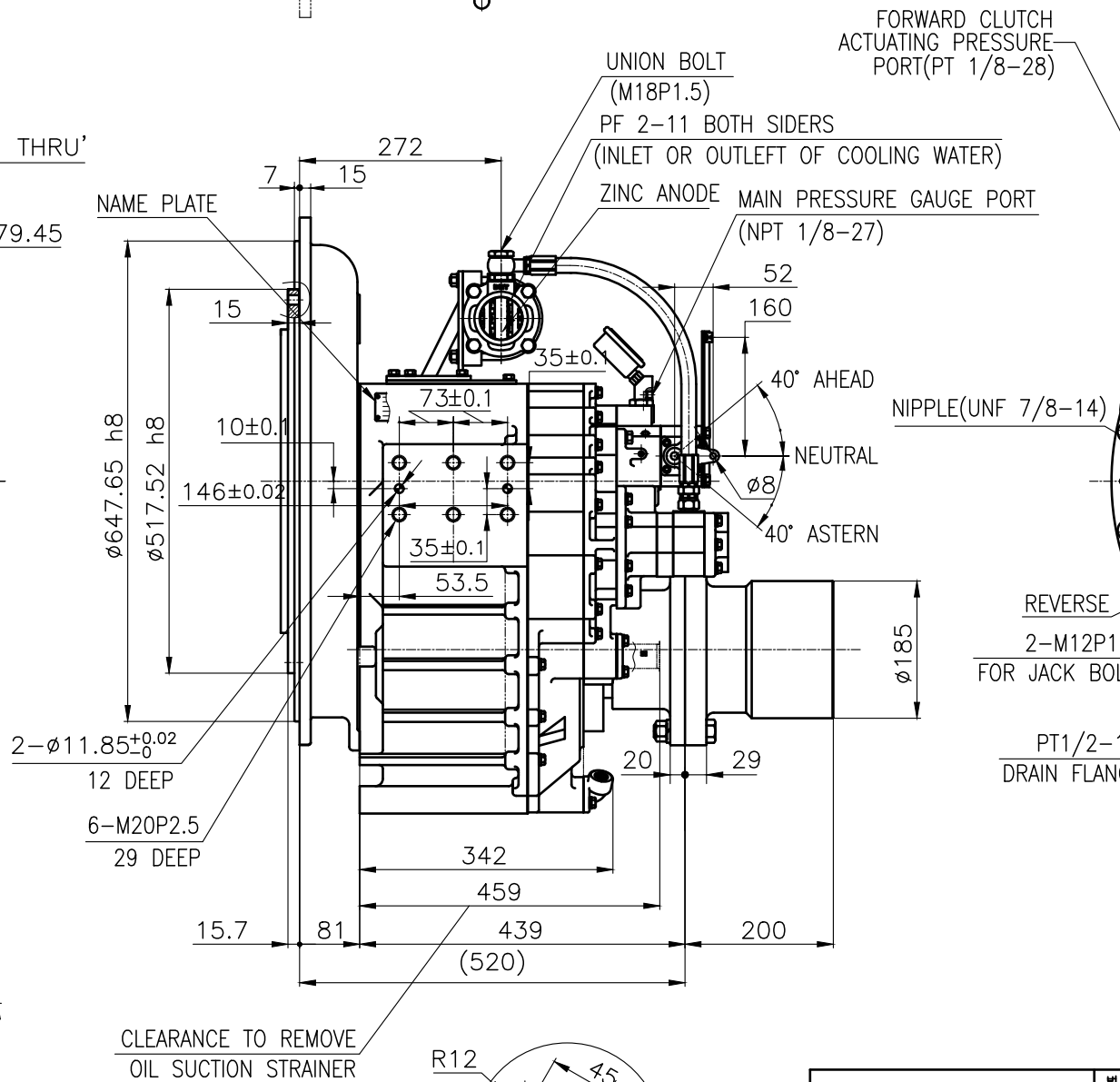
DMT240H MARINE TRANSMISSION SPECIFICATION	
GEAR RATIO	1.50 , 1.97 , 2.44 , 2.93 , 3.40
TOTAL WEIGHT	APPROX. 400 Kg(DRY)
OIL CAPACITY	APPROX. 8L
OIL VISCOSITY	SAE # 30
OIL PRESSURE	1.96 ~ 2.54 MPa
DIRECTION OF ROTATION	CLUTCH OIL
IN FORWARD	INPUT C.C.W VIEWED FROM THE STERN
OUTPUT	C.W VIEWED FROM THE STERN
OIL CHANGE INTERVAL	THE FIRST 100HOURS OF INITIAL OPERATION AND EVERY 1000HOURS THEREAFTER
SHIFTING LIMIT	UNDER 50% OF THE RATED ENGINE SPEED
OIL COOLER	WATER FLOW 40 ~ 60 L/m
	TEMPERATURE OF COOLING WATER MAX 32°C
OPERATING TORQUE OF SHIFTING LEVER	UNDER 2.94Nm



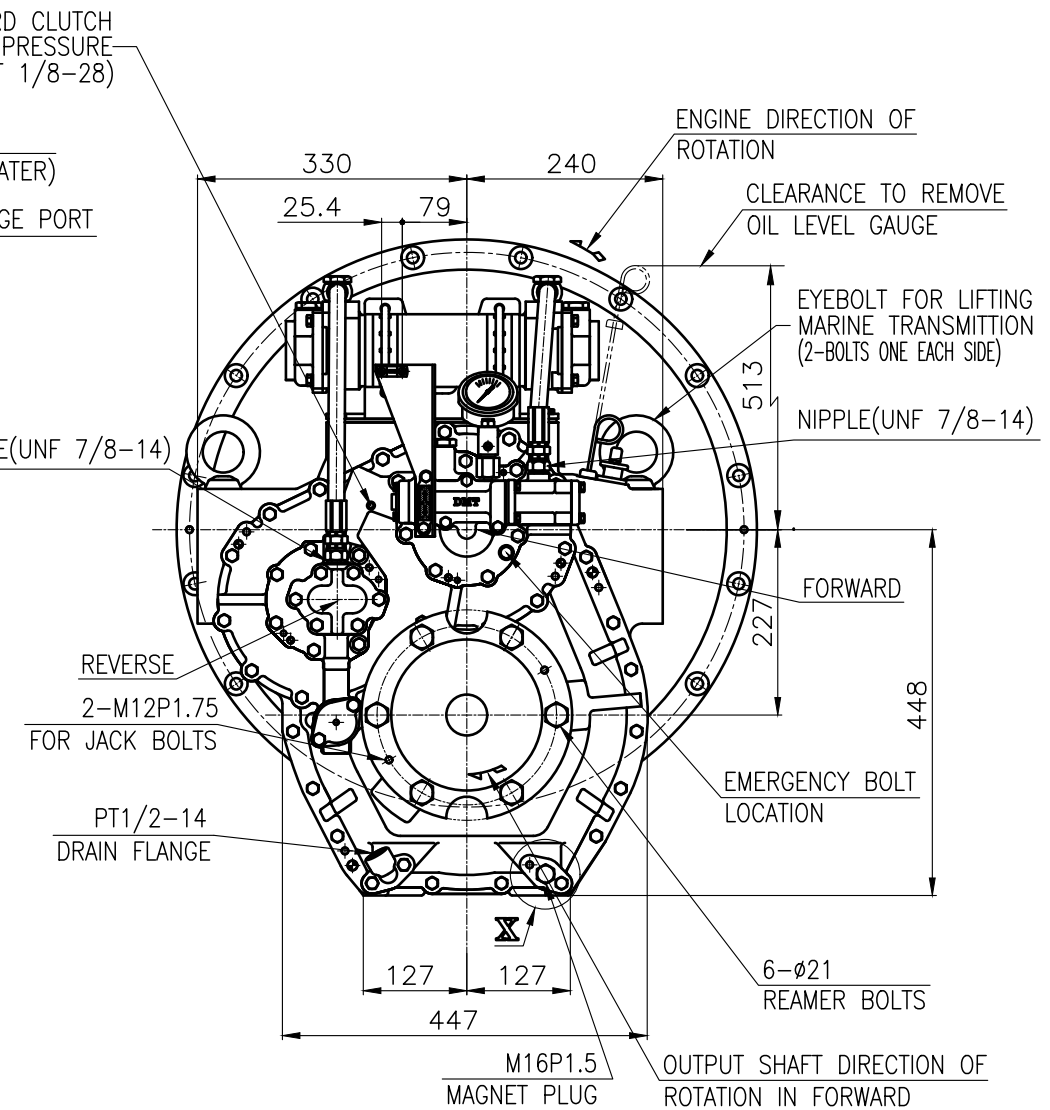
- REMARK
- HOUSING: SAE#0
 - DRIVING RING: SAE 16"
 - COUPLING TYPE : RUBBER



BRACKET DIMENSION



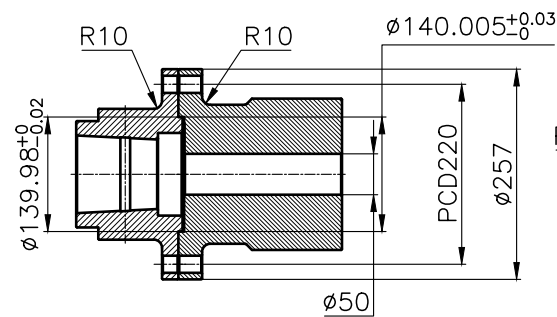
"X" detail(3/1)



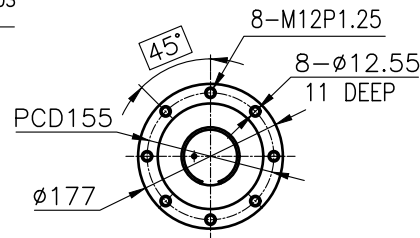
TOLERANCE ON		PART NO.		PART NAME		Q'TY		MATERIAL		REMARKS	
분수	소수	각도	분수	소수	각도	분수	소수	각도	분수	소수	각도
±	±	±	±	±	±	±	±	±	±	±	±
1	0.3	0.1	±	0.05	1	1	1	1	1	1	1
4	0.5	0.2	±	0.07	1	1	1	1	1	1	1
16	0.7	0.3	±	0.1	1	1	1	1	1	1	1
63	1.2	0.5	±	0.2	1	1	1	1	1	1	1
250	2.0	0.8	±	0.3	1	1	1	1	1	1	1

DATE	2018.06.29	SCALE	1/1
APPROVED BY	JK.Kim	CHECKED BY	TH.Cha
DRAWN	MA.Kim	DESIGNED	

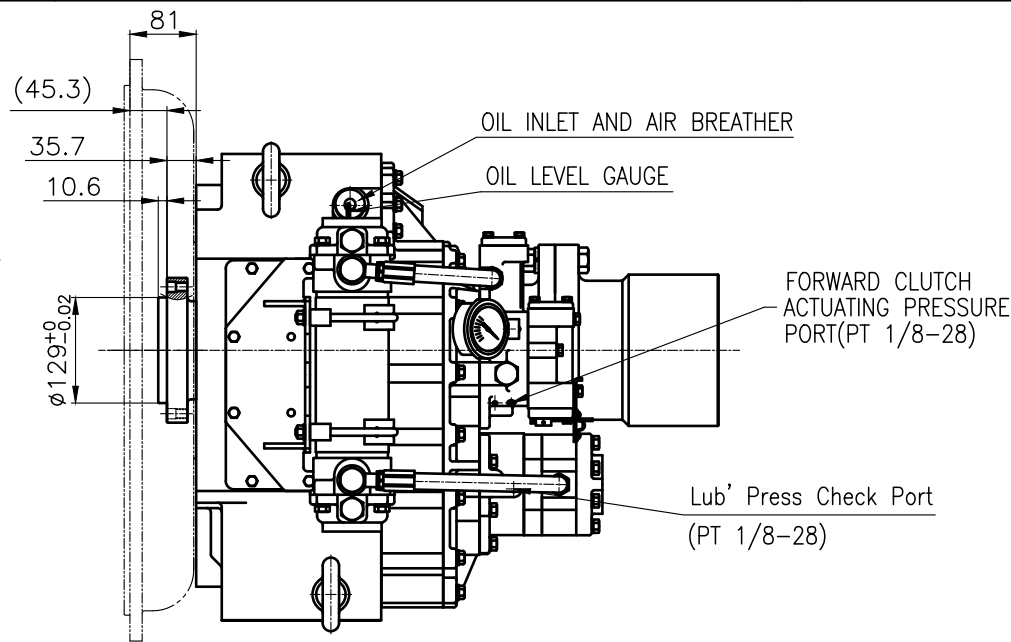
TYPE	DMT240H	ORIGINAL DWG. NO.	
NAME	MARINE TRANSMISSION	DWG. NO.	24000GA~E-016RC
SIZE	A 8	CODE ID. NO.	



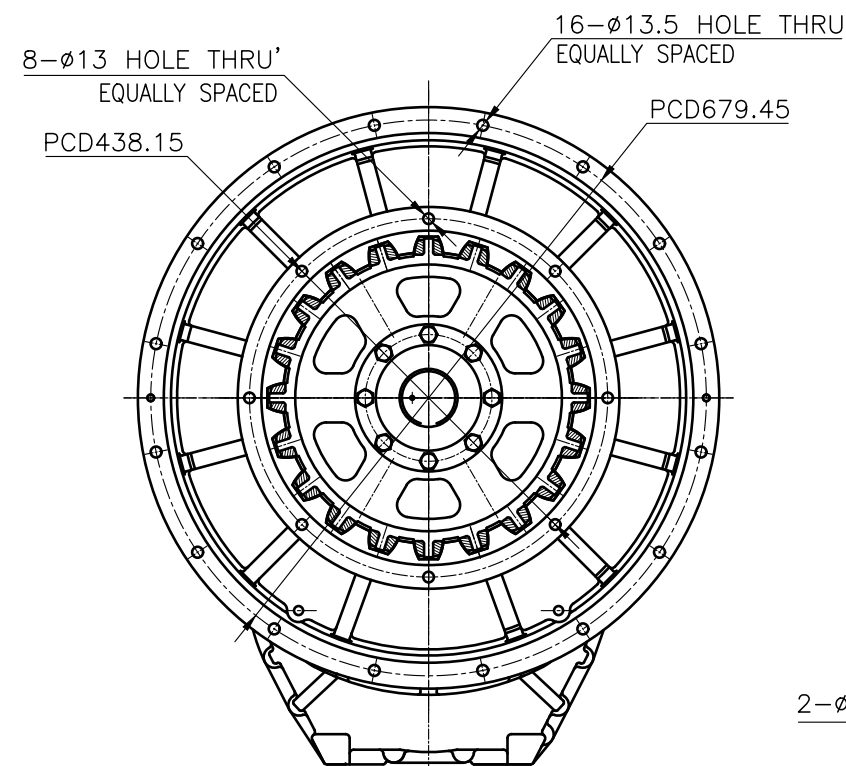
OUTPUT SHAFT COUPLING & PROPELLER COUPLING DIMENSION



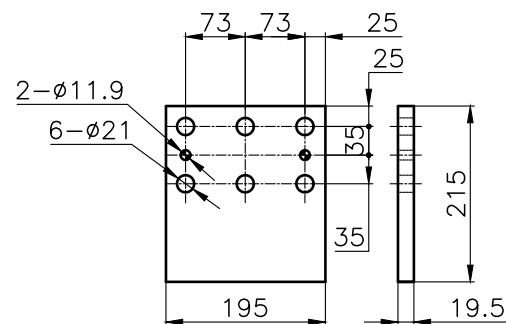
INPUT COUPLING DIMENSION



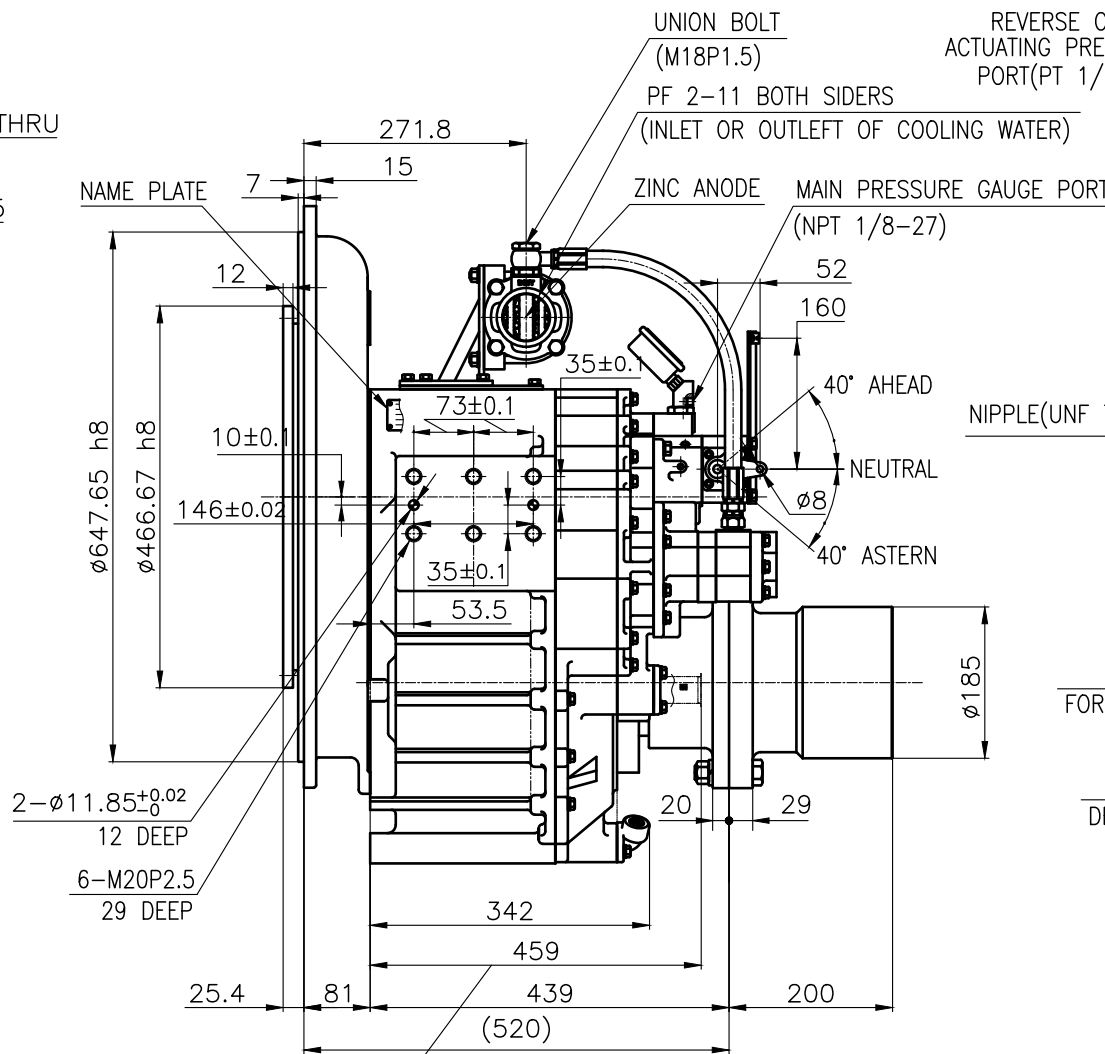
DMT240H MARINE TRANSMISSION SPECIFICATION			
GEAR RATIO	1.50 , 1.97 , 2.44 , 2.93 , 3.40		
TOTAL WEIGHT	APPROX. 400 Kg(DRY)		
OIL CAPACITY	APPROX. 8L		
OIL VISCOSITY	SAE # 30		
OIL PRESSURE	1.96 ~ 2.54 MPa	CLUTCH OIL	
DIRECTION OF ROTATION	INPUT	C.C.W VIEWED FROM THE STERN	
	OUTPUT	C.W VIEWED FROM THE STERN	
OIL CHANGE INTERVAL	THE FIRST 100HOURS OF INITIAL OPERATION AND EVERY 1000HOURS THEREAFTER		
SHIFTING LIMIT	UNDER 50% OF THE RATED ENGINE SPEED		
OIL COOLER	WATER FLOW	40 ~ 60 L/m	
	TEMPERATURE OF COOLING WATER	MAX 32°C	
OPERATING TORQUE OF SHIFTING LEVER	UNDER 2.94Nm		



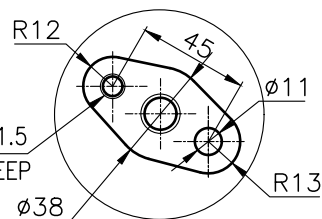
- REMARK
- HOUSING: SAE#0
 - DRIVING RING: SAE 14"
 - COUPLING TYPE : RUBBER



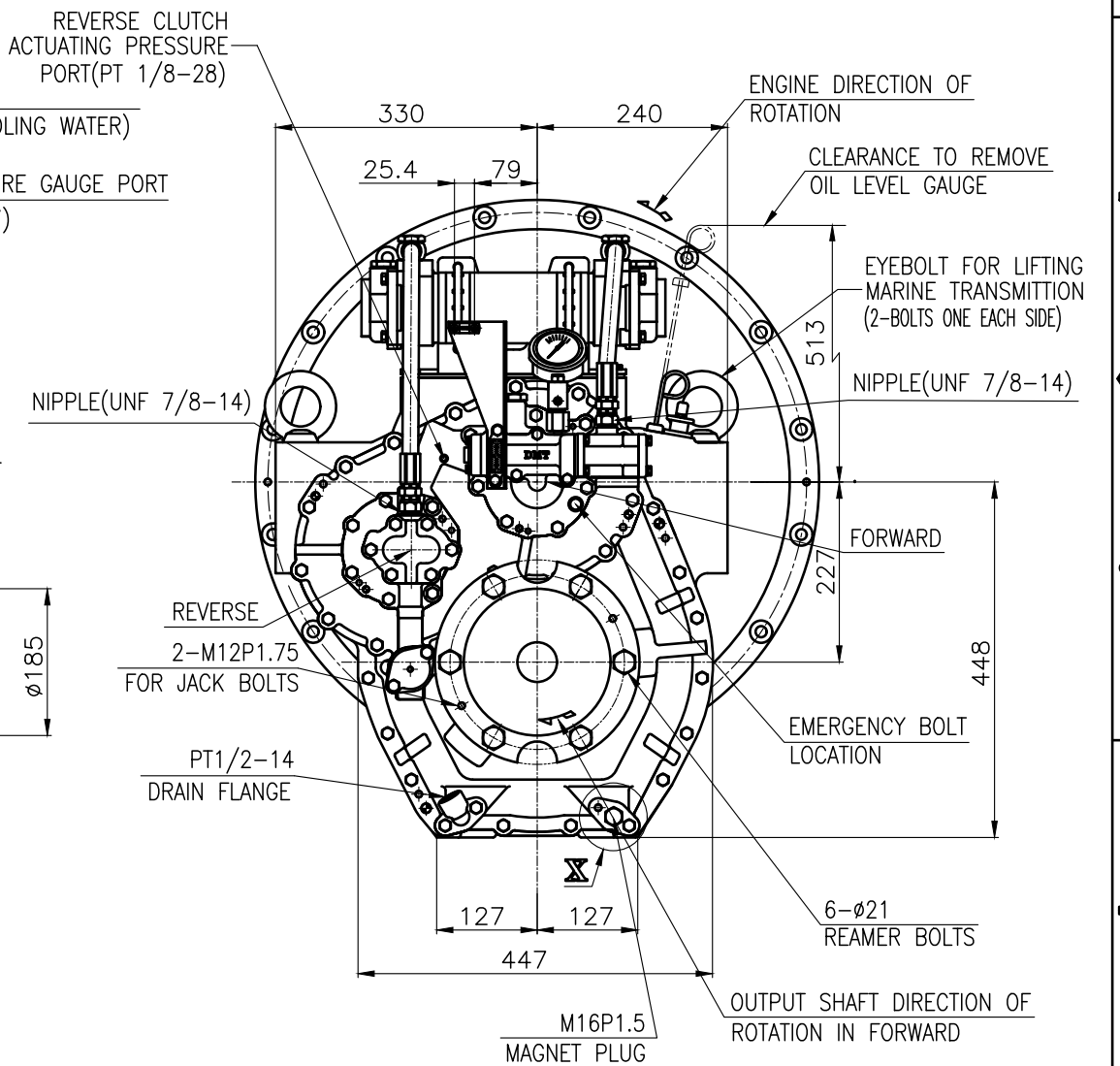
BRACKET DIMENSION



CLEARANCE TO REMOVE OIL SUCTION STRAINER



"X" detail(3/1)



TOLERANCE ON				번호	품명	PART NO.	PART NAME	개수	재료	규격	비고
분수	소수	각도	공차	NO.	명	번	명	Q'TY	MATERIAL	SIZE	REMARKS
± 0.05	± 0.03	± 0.1	± 0.05								
± 0.07	± 0.05	± 0.2	± 0.07								
± 0.1	± 0.07	± 0.3	± 0.1								
± 0.2	± 0.1	± 0.5	± 0.2								
± 0.3	± 0.2	± 0.7	± 0.3								
± 0.5	± 0.3	± 1.2	± 0.5								
± 0.8	± 0.5	± 2.0	± 0.8								

작성 DATE	척도	SCALE	1/1
2018.06.29	작성	SCALE	1/1
APPROVED BY	CHECKED BY	DRAWN	DESIGNED
JK.Kim	TH.Cha	MA.Kim	

TYPE	NAME	도 번호	개량(REV.)
DMT240H	MARINE TRANSMISSION	24000GA~E-014RC	000

크기	코드 번호
A 3	CODE ID. NO.

D-I INDUSTRIAL