



## MARINE GENERATORS

# 29 GS/GSC

Single-Phase

### General data

|                       |                    |                 |         |
|-----------------------|--------------------|-----------------|---------|
| <b>Maximum power*</b> | 28.4 kW (28.4 kVA) | <b>Voltage</b>  | 230 V   |
| <b>Prime Power**</b>  | 25.8 kW            | <b>Amperage</b> | 123.5 A |
| <b>Frequency</b>      | 50 Hz              | <b>Phases</b>   | 1       |

### Dimensions and weights

|                                    |         |                                 |         |
|------------------------------------|---------|---------------------------------|---------|
| <b>Total length without canopy</b> | 1422 mm | <b>Total length with canopy</b> | 1600 mm |
| <b>Total width without canopy</b>  | 740 mm  | <b>Total width with canopy</b>  | 740 mm  |
| <b>Total height without canopy</b> | 783 mm  | <b>Total height with canopy</b> | 837 mm  |
| <b>Dry weight without canopy</b>   | 680 Kg  | <b>Dry weight with canopy</b>   | 714 Kg  |

### Engine

|                                 |                         |                             |                         |
|---------------------------------|-------------------------|-----------------------------|-------------------------|
| <b>Base engine manufacturer</b> | Mitsubishi              | <b>Diameter</b>             | 94 mm (3.7 in)          |
| <b>Model</b>                    | MINI-74                 | <b>Stroke</b>               | 120 mm (4.72 in)        |
| <b>Type</b>                     | Diesel, 4 stroke        | <b>Compression ratio</b>    | 22:1                    |
| <b>Engine RPM</b>               | 1500                    | <b>Injection system</b>     | Mechanical and indirect |
| <b>Number of cylinders</b>      | 4                       | <b>Intake system</b>        | Naturally aspirated     |
| <b>Total displacement</b>       | 3331 cc                 | <b>SAE Flywheel housing</b> | SAE 3                   |
| <b>Oil</b>                      | SAE 15W40               | <b>Coolant capacity</b>     | 13 L (3.43 gal)         |
| <b>Oil capacity</b>             | 10 L (2.64 gal)         | <b>Flywheel</b>             | SAE 11 1/2              |
| <b>Power</b>                    | 30.8 kW (41.89 CV)      | <b>Coolant flow rate</b>    | 105 l/min (27.74 gal/m) |
| <b>Salt water flow rate</b>     | 37.5 l/min (9.91 gal/m) | <b>Intake air flow rate</b> | 2.25 m3/m               |
| <b>Exhaust type</b>             | Wet exhaust elbow       | <b>V-Belt Protection</b>    | Optional                |

Rating conditions according to ISO 3046 (100 kPa barometric pressure, 30 % relative humidity abd 25 °C (77 ° F))

\* Maximum output power: maximum power supplied by the genset at full load

\*\* Prime Power: rated power according to ISO 3046 and ISO 8528-1. 10 % overload capacity one hour in twelve hours.

Fuel system details

1 kW 1,36 CV 1 kW 1,36 HP (metric) 1 kW 1,36 CH

45580 - 10/24

## Fuel system details

|                         |                    |                            |                     |
|-------------------------|--------------------|----------------------------|---------------------|
| <b>Consumption 25%</b>  | 2.9 l/h (0.77 gal) | <b>Fuel type</b>           | Diesel              |
| <b>Consumption 50%</b>  | 4.3 l/h (1.14 gal) | <b>Fuel standards</b>      | Fueloil diesel ASTM |
| <b>Consumption 75%</b>  | 6.1 l/h (1.61 gal) | <b>Injection pump type</b> | In line             |
| <b>Consumption 100%</b> | 8.2 l/h (2.17 gal) | <b>Governor type</b>       | Mechanical          |

## Electrical system

|                            |          |                             |          |
|----------------------------|----------|-----------------------------|----------|
| <b>Battery voltage</b>     | 12 V     | <b>Stop solenoid type</b>   | ETR      |
| <b>Starter motor</b>       | 2.2 kW   | <b>Alternator</b>           | 50 A     |
| <b>Earth isolated</b>      | Optional | <b>IP 65 box kit</b>        | Optional |
| <b>SCO 11 double panel</b> | Optional | <b>Current transformers</b> | Optional |

## Installation details

|   |                 |                                      |                  |
|---|-----------------|--------------------------------------|------------------|
| <b>Exhaust hose inner diameter</b>      | 75 mm (2.95 in) | <b>Maximum fuel lift height</b>      | 0.6 m (1.97 ft)  |
| <b>Sea water hose inner diameter</b>    | 32 mm (1.26 in) | <b>Maximum raw water lift height</b> | 2.5 m (98.43 in) |
| <b>Fuel feeding hose inner diameter</b> | 8 mm (0.31 in)  | <b>Maximum sea water temperature</b> | 32 ° (89.6 °F)   |
| <b>Fuel return hose inner diameter</b>  | - (- in)        | <b>Maximum installation angle***</b> | 15 °             |
| <b>Minimum battery capacity</b>         | 12 V 95 Ah      |                                      |                  |

## Alternator details

|                        |              |                                      |                        |
|------------------------|--------------|--------------------------------------|------------------------|
| <b>Brand</b>           | Meccalte     | <b>Cos Phi</b>                       | 1                      |
| <b>Model</b>           | ECP32 1M 4 C | <b>Tropicalized</b>                  | Yes                    |
| <b>Regulator type</b>  | DSR          | <b>Excitation system</b>             | Brushless              |
| <b>Number of poles</b> | 4            | <b>Voltage regulation accuracy**</b> | 0,01                   |
| <b>Isolation type*</b> | H            | <b>Alternator type</b>               | Synchronous            |
| <b>IP protection</b>   | 23           | <b>Standards</b>                     | EN60034-1, IEC 60034-1 |

## Standard equipment

|                                 |                               |
|---------------------------------|-------------------------------|
| 4 m electrical wiring extension | SCO 11 control panel          |
| Oil extraction pump             | Owner's and alternator manual |
| Rigid bed                       | Packaging                     |
| Anti Vibration Mounts           |                               |

## Optional accessories

|  |                    |
|--|--------------------|
| Siphon break kit mandatory if generator is below waterline                               | Wet Exhaust System |
| Engine electrical system at 24 V   | Water Filters      |
| Service/Cruise Kits: fuel and oil filters, raw water pump, impeller, alternator belt,... | Sea water cock     |
| Dry Exhaust system   | Welcome Kit        |

\* Other protections available

\*\* With load from 0 to 100%, speed variation from -2% up to +5%, power factor 0,8 linear and balanced load.

\*\*\* In all directions

For other requirements please contact the Sales Dept.

# SCO 11 Panel



## General Description

|   |
|---|
| Graphic LCD with light, 128 x 64 pixels display |
| Genset measures (see Display Information)       |
| Configuration protected by user and password    |
| Running hour indication                         |
| Multilenguaje                                   |
| Event history log                               |
| Genset protections (see Alarm Management)       |
| Preheating function                             |
| D+ pre-excitation Terminal                      |
| Built-in PLC function                           |
| CAN bus information with SAE J1939 protocol     |
| Maintenance hours control                       |
| Dimensions 195 x 135 x 47 mm                    |
| Board Cutting 172 x 112 mm                      |
| Weight 450 g                                    |

## Alarm Management

|                                |
|--------------------------------|
| Shut Downs (SD)                |
| High coolant temperature       |
| Low oil pressure               |
| Overspeed                      |
| Overload*                      |
| Short circuit*                 |
| Overcurrent*                   |
| Over/Under voltage             |
| Over/Under frequency           |
| Emergency stop                 |
| Warnings (WRN)                 |
| High coolant temperature       |
| Low oil pressure               |
| Over/Under Battery voltage     |
| Maintenance request            |
| Sensor failure detection (FLS) |

## Operating modes

|                                     |                                   |
|-------------------------------------|-----------------------------------|
| OFF Mode                            | AUT Mode (auto start/stop engine) |
| MAN Mode (manual start/stop engine) |                                   |

## Power Supply

|  |
|--|
| Voltage supply 12/24 DC with fuse protection |
| Consumption 80mA (12V) or 51 (24V)           |

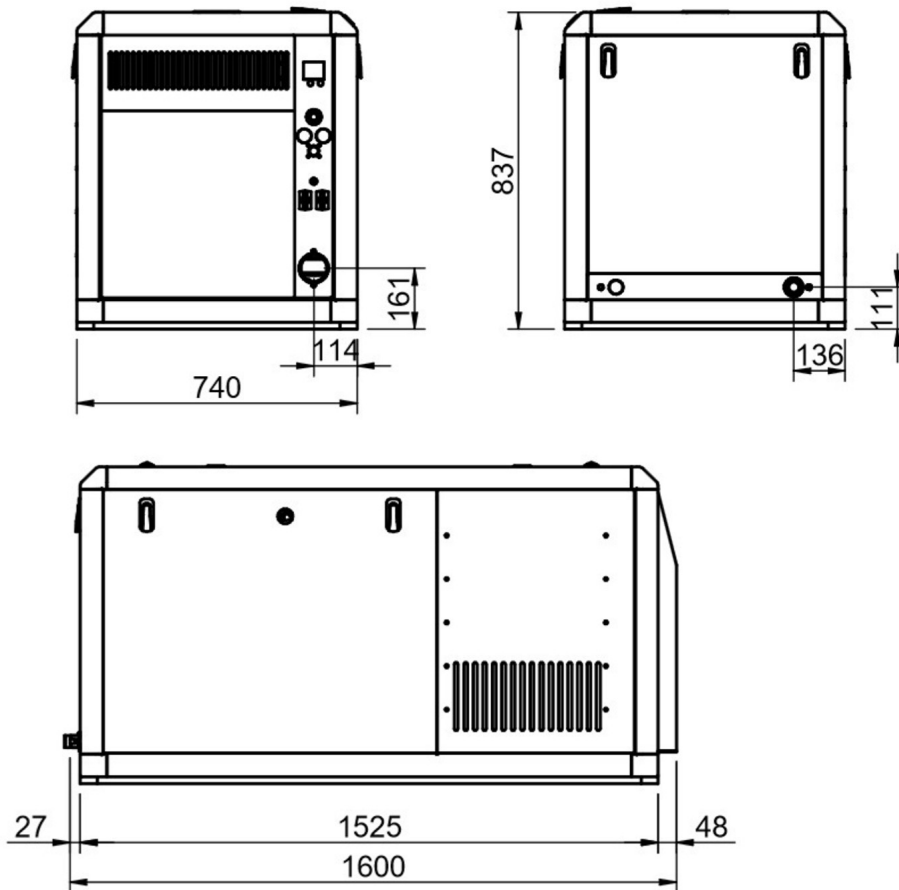
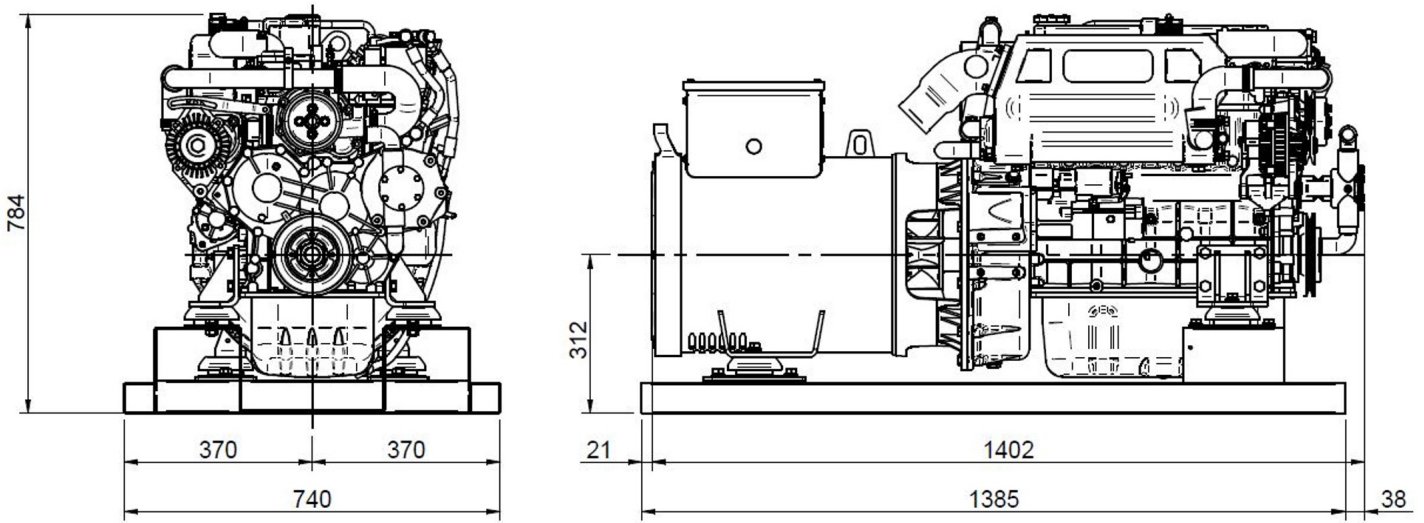
## Operating Conditions

|   |
|---|
| Operating temperature -20+70 °C                     |
| Humidity 95 % without condensation                  |
| Front Panel Protection IP65                         |
| Standard Conformity                                 |
| EN 61000-6-2, EN 61000-6-4, EN 61010-1              |
| EN 60068-2-6 (2÷25 Hz / ±1,6 mm; 25÷100 Hz / 4.0 g) |
| EN 60068-2-30:2005 25/55°C, RH 95%, 48hours         |
| EN 60529 (front panel IP65, back side IP20)         |

## Display Information

|  |
|--|
| Measurement  |
| L1-L3 Voltage (V), Frequency (Hz), Oil Pressure (bar)        |
| Coolant Temperature (°C), Battery voltage (V), RPM           |
| Active Power* (kW), Apparent Power* (kVA), Current* (A), PF* |
| History log  |

## Dimensions



Authorized dealer



Detailed drawings, brochures and manuals are available on the web [soleadance.com](http://soleadance.com). All rights reserved. Technical specifications, data and presentation are subjected to variations, changes and updates without prior notice. Non-contractual information.

